

DODGE CENTER, MINNESOTA

AL-6579 (FAA)

19115

WAAS CH 97532 W16A	APP CRS 164°	Rwy Idg TDZE Apt Elev 4500 1299 1304
---------------------------------	------------------------	--

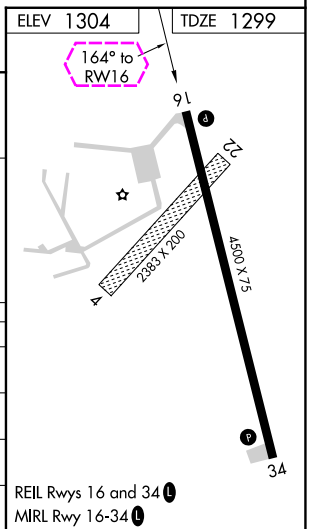
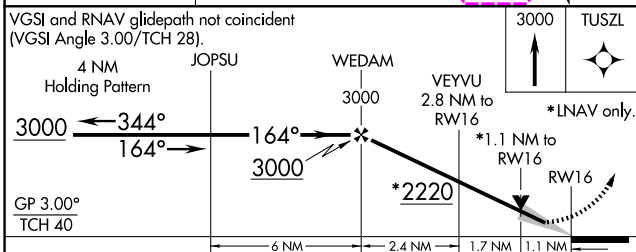
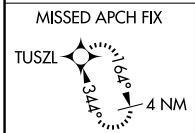
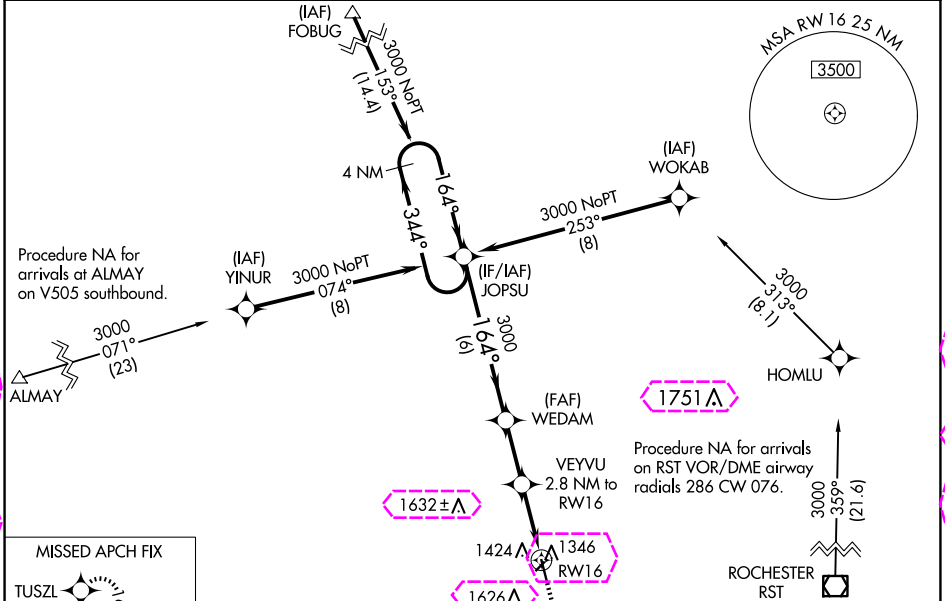
RNAV (GPS) RWY 16

DODGE CENTER (TOB)

⚠ For uncompensated Baro-VNAV systems, LNAV/VNAV NA below -17°C (2°F) or above 54°C (130°F). DME/DME RNP-0.3 NA. Baro-VNAV and VDP NA with Rochester Intl altimeter setting. When local altimeter setting not received, use Rochester Intl altimeter setting and increase all DA 39 feet and all MDA 40 feet, and increase LNAV/VNAV all Cats, LNAV Cat C visibility 1/8 mile, and Circling Cat C visibility 1/4 mile.

MISSED APPROACH: Climb to 3000 direct TUSZL and hold.

AWOS-3 119.075	ROCHESTER APP CON * 119.8 251.125	CTAF 122.9
---------------------------------	---	----------------------



CATEGORY	A	B	C	D
LPV DA		1549-1 250 (300-1)		NA
LNAV/VNAV DA		1586-1 287 (300-1)		NA
LNAV MDA	1680-1	381 (400-1)	1680-1 1/8 381 (400-1 1/8)	NA
CIRCLING	1960-1	656 (700-1)	1960-1 3/4 656 (700-1 3/4)	NA

DODGE CENTER, MINNESOTA
Amdt 1A 11DEC14

44°01'N-92°50'W

DODGE CENTER (TOB) RNAV (GPS) RWY 16

NC-1, 30 OCT 2025 to 27 NOV 2025

NC-1, 30 OCT 2025 to 27 NOV 2025

DODGE CENTER, MINNESOTA

AL-6579 (FAA)

25331

WAAS CH 97532 W16A	APP CRS 164°	Rwy Ldg TDZE Apt Elev 4500 1299 1304
--	------------------------	--

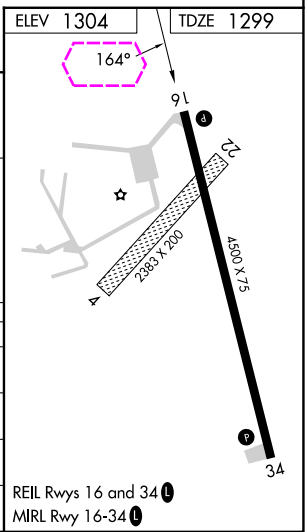
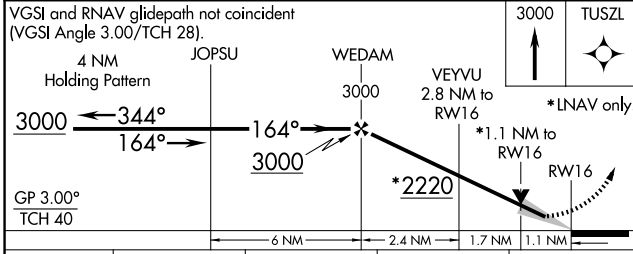
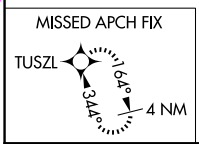
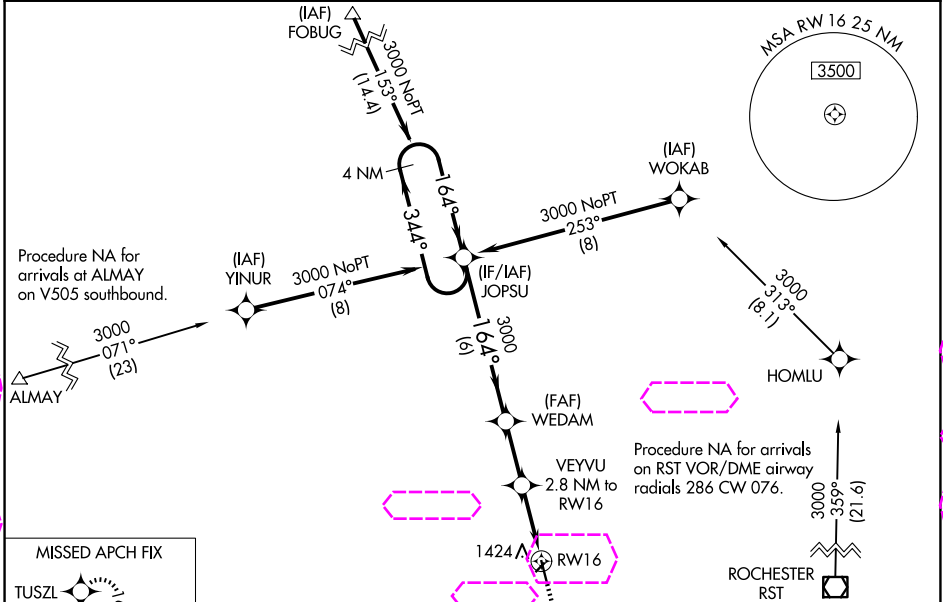
RNAV (GPS) RWY 16

DODGE CENTER (TOB)

⚠ For uncompensated Baro-VNAV systems, LNAV/VNAV NA below -17°C (2°F) or above 54°C (130°F). DME/DME RNP-0.3 NA. Baro-VNAV and VDP NA with Rochester Inlt altimeter setting. When local altimeter setting not received, use Rochester Inlt altimeter setting and increase all DA 39 feet and all MDA 40 feet, and increase LNAV/VNAV all Cats, LNAV Cat C visibility 1/8 mile, and Circling Cat C visibility 1/4 mile.

MISSED APPROACH: Climb to 3000 direct TUSZL and hold.

AWOS-3PT 119.075	ROCHESTER APP CON* 119.8 251.125	CTAF 122.9
-----------------------------------	--	----------------------



CATEGORY	A	B	C	D
LPV DA		1549-1 250 (300-1)		NA
LNAV/VNAV DA		1586-1 287 (300-1)		NA
LNAV MDA	1680-1	381 (400-1)	1680-1 1/8 381 (400-1 1/8)	NA
CIRCLING	1960-1	656 (700-1)	1960-1 3/4 656 (700-1 3/4)	NA

DODGE CENTER, MINNESOTA
Amdt 1A 11DEC14

44°01'N-92°50'W

DODGE CENTER (TOB)
RNAV (GPS) RWY 16

NC-1, 27 NOV 2025 to 25 DEC 2025

NC-1, 27 NOV 2025 to 25 DEC 2025