

MARYSVILLE, OHIO

AL-6380 (FAA)

25163

WAAS CH 50327 W27A	APP CRS 268°	Rwy Ldg TDZE Apt Elev	4095 1015 1021
--	------------------------	-----------------------------	---

RNAV (GPS) RWY 27

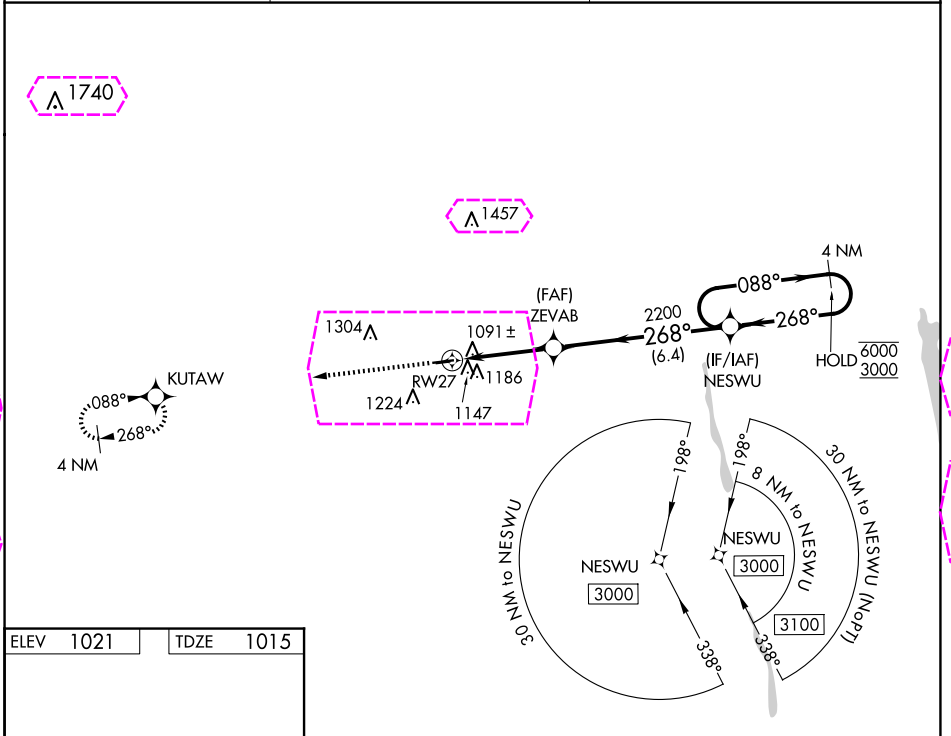
UNION COUNTY (MRT)

RNP APCH - GPS.

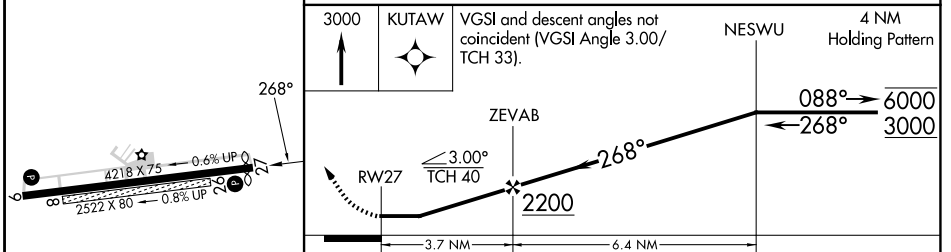
Circling NA to Rwys 8 and 26. Rwy 27 helicopter visibility reduction below 1 SM NA.
 Straight-in Rwy 27 at night, Circling Rwy 27 at night, operational VGSI required, remain on or above VGSI glidepath until threshold.

MISSED APPROACH: Climb to 3000 direct KUTAW and hold.

AWOS-3 119.275	COLUMBUS APP CON 125.95 317.775	UNICOM 122.8 (CTAF)
--------------------------	---	-------------------------------



ELEV 1021	TDZE 1015
-----------	-----------



CATEGORY	A	B	C	D
LP MDA	1360-1 345 (400-1)			
LNAV MDA	1400-1	385 (400-1)	1400-1½	385 (400-1½)
CIRCLING	1520-1 499 (500-1)	1540-1 519 (600-1)	1620-1½ 599 (600-1½)	1620-2 599 (600-2)

MIRL Rwy 9-27
REIL Rwys 9 and 27

MARYSVILLE, OHIO
Orig-D 06OCT22

40°13'N-83°21'W

RNAV (GPS) RWY 27

EC-2, 30 OCT 2025 to 27 NOV 2025

EC-2, 30 OCT 2025 to 27 NOV 2025

MARYSVILLE, OHIO

AL-6380 (FAA)

25331

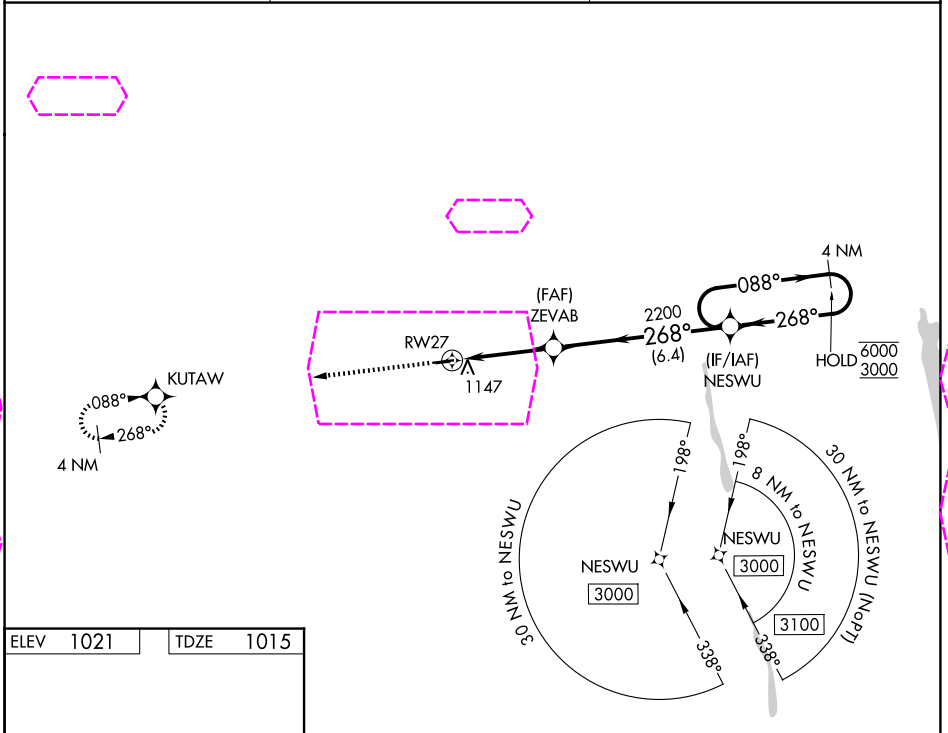
WAAS CH 50327 W27A	APP CRS 268°	Rwy Ldg TDZE Apt Elev	4095 1015 1021
--	------------------------	-----------------------------	---

RNAV (GPS) RWY 27

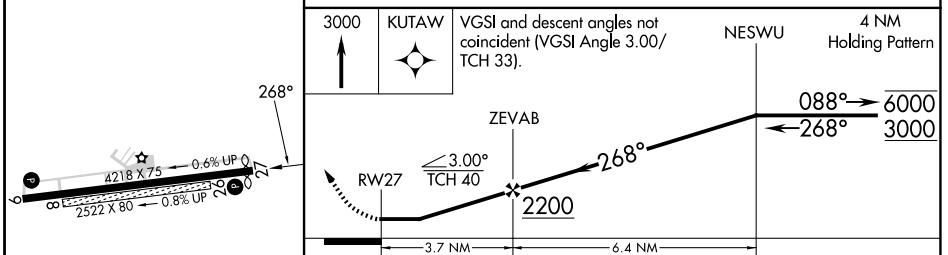
UNION COUNTY (MRT)

RNP APCH - GPS.	MISSED APPROACH: Climb to 3000 direct KUTAW and hold.
<p>▼ Circling NA to Rwys 8 and 26. Rwy 27 helicopter visibility reduction below 1 SM NA.</p> <p>▲ Straight-in Rwy 27 at night, Circling Rwy 27 at night, operational VGSI required, remain on or above VGSI glidepath until threshold.</p>	

AWOS-3 119.275	COLUMBUS APP CON 125.95 317.775	UNICOM 123.05 (CTAF)
--------------------------	---	--------------------------------



ELEV 1021	TDZE 1015
-----------	-----------



CATEGORY	A	B	C	D
LP MDA	1360-1		345 (400-1)	
LNAV MDA	1400-1	385 (400-1)	1400-1½	385 (400-1½)
CIRCLING	1520-1 499 (500-1)	1540-1 519 (600-1)	1620-1½ 599 (600-1½)	1620-2 599 (600-2)

MIRL Rwy 9-27
REIL Rwys 9 and 27

MARYSVILLE, OHIO
Orig-D 06OCT22

40°13'N-83°21'W

RNAV (GPS) RWY 27

EC-2, 27 NOV 2025 to 25 DEC 2025

EC-2, 27 NOV 2025 to 25 DEC 2025