

PARIS, ILLINOIS

AL-6298 (FAA)

23054

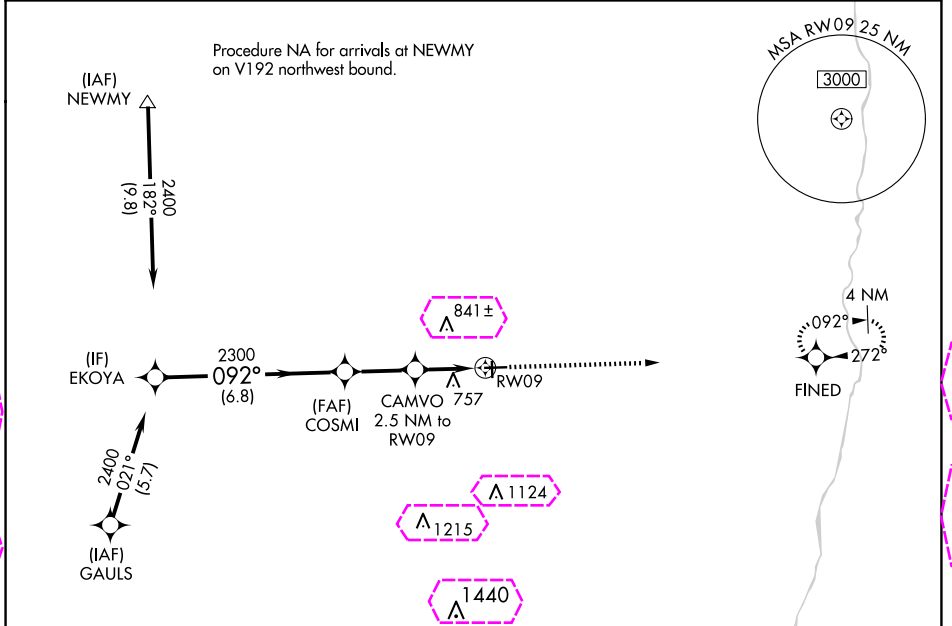
WAAS CH 50439 W09A	APP CRS 092°	Rwy Idg TDZE 654 Apt Elev 654	4501
--	------------------------	---	-------------

RNAV (GPS) RWY 9

EDGAR COUNTY (PRG)

RNP APCH.	MISSED APPROACH: Climb to 2300 direct FINED and hold.
<p>For uncompensated Baro-VNAV systems, LNAV/VNAV NA below -16°C or above 54°C. Rwy 9 helicopter visibility reduction below 3/4 SM NA. Circling Rwy 18 NA at night.</p>	

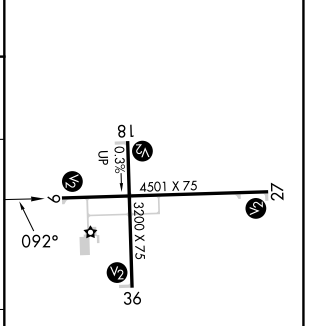
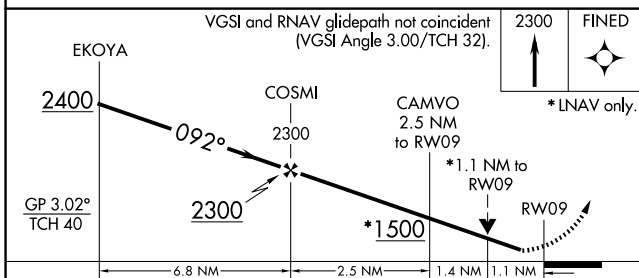
AWOS-3 124.175	HULMAN APP CON 125.45 339.8	UNICOM 123.0 (CTAF) 0
--------------------------	---------------------------------------	---------------------------------



EC-3, 30 OCT 2025 to 27 NOV 2025

EC-3, 30 OCT 2025 to 27 NOV 2025

ELEV 654	TDZE 654
----------	----------



CATEGORY	A	B	C	D
LPV DA		904-1	250 (300-1)	
LNAV/VNAV DA		908-1	254 (300-1)	
LNAV MDA		1020-1	366 (400-1)	
CIRCLING	1080-1 426 (500-1)	1120-1 466 (500-1)	1200-1½ 546 (600-1½)	1320-2 666 (700-2)

REIL Rwy 27
MIRL Rwy 9-27 and 18-36 0

PARIS, ILLINOIS

AL-6298 (FAA)

25331

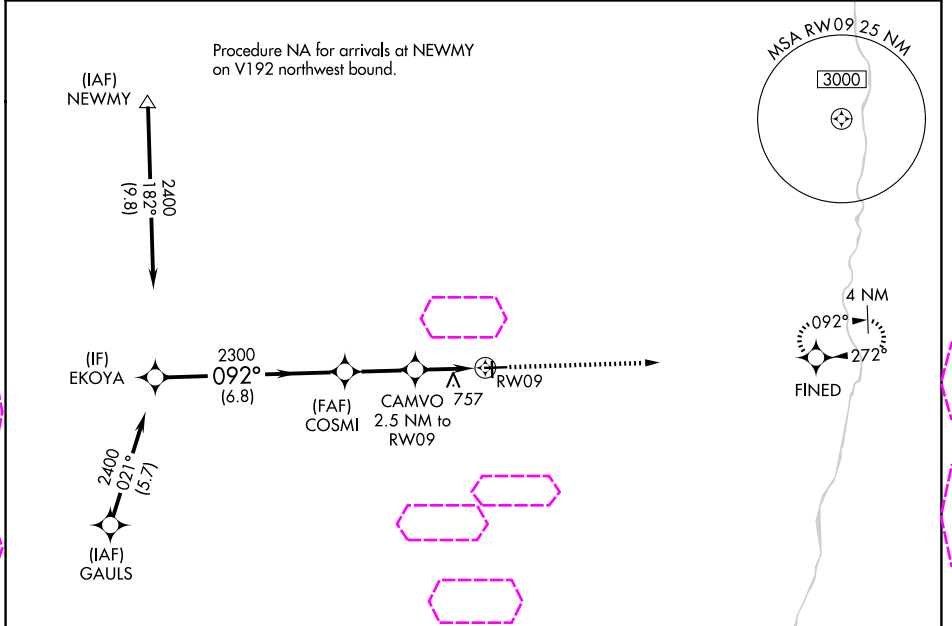
WAAS CH 50439 W09A	APP CRS 092°	Rwy Ldg TDZE Apt Elev	4501 654 654
--	------------------------	-----------------------------	---

RNAV (GPS) RWY 9

EDGAR COUNTY (PRG)

RNP APCH.	MISSED APPROACH: Climb to 2300 direct FINED and hold.
<p>For uncompensated Baro-VNAV systems, LNAV/VNAV NA below -16°C or above 54°C. Rwy 9 helicopter visibility reduction below ¾ SM NA. Circling Rwy 18 NA at night.</p>	

AWOS-3 124.175	HULMAN APP CON 125.45 339.8	UNICOM 123.0 (CTAF) 0
--------------------------	---------------------------------------	---------------------------------

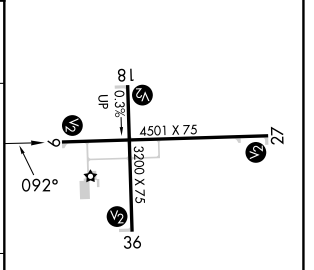
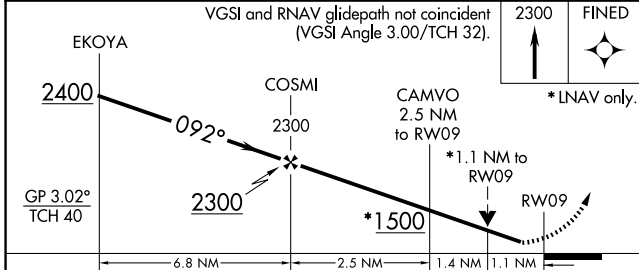


EC-3, 27 NOV 2025 to 25 DEC 2025

EC-3, 27 NOV 2025 to 25 DEC 2025



ELEV 654	TDZE 654
----------	----------



CATEGORY	A	B	C	D
LPV DA		904-1	250 (300-1)	
LNAV/VNAV DA		908-1	254 (300-1)	
LNAV MDA		1020-1	366 (400-1)	
CIRCLING	1080-1 426 (500-1)	1120-1 466 (500-1)	1200-1½ 546 (600-1½)	1320-2 666 (700-2)

REIL Rwy 27
MIRL Rwy 9-27 and 18-36 0