

PARIS, ILLINOIS

AL-6298 (FAA)

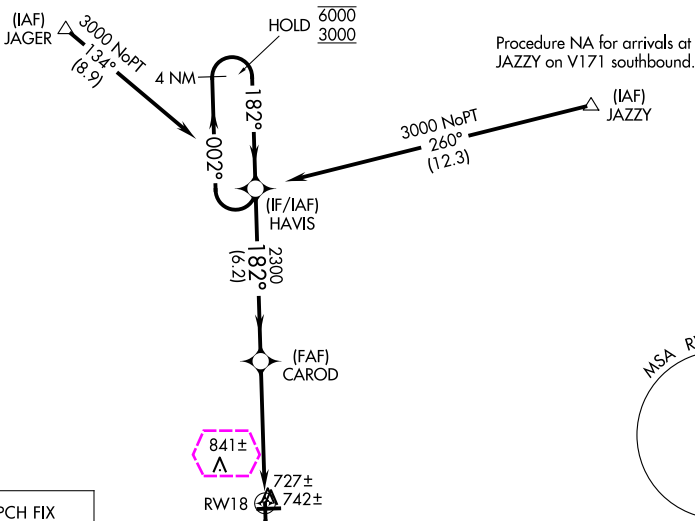
23054

WAAS CH 82639 W18A	APP CRS 182°	Rwy Idg TDZE Apt Elev	3200 654 654
--	------------------------	-----------------------------	---

RNAV (GPS) RWY 18

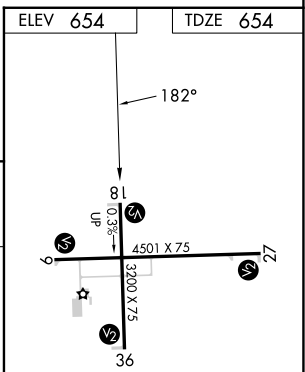
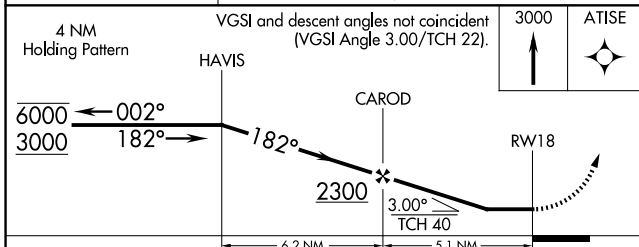
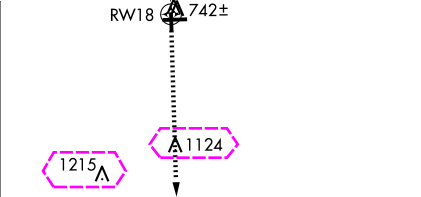
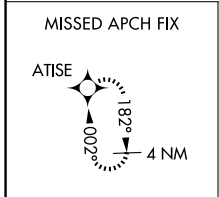
EDGAR COUNTY (PRG)

RNP APCH.		MISSED APPROACH: Climb to 3000 direct ATISE and hold.
Rwy 18 helicopter visibility reduction below 1 SM NA. Straight-in Rwy 18 NA at night, Circling Rwy 18 NA at night.		
AWOS-3 124.175	HULMAN APP CON 125.45 339.8	UNICOM 123.0 (CTAF) 1



EC-3, 30 OCT 2025 to 27 NOV 2025

EC-3, 30 OCT 2025 to 27 NOV 2025



CATEGORY	A	B	C	D
LP MDA		980-1	326 (400-1)	
LNAV MDA		1000-1	346 (400-1)	
CIRCLING	1080-1 426 (500-1)	1120-1 466 (500-1)	1200-1½ 546 (600-1½)	1320-2 666 (700-2)

REIL Rwy 27
MIRL Rwy 9-27 and 18-36 1

PARIS, ILLINOIS
Orig-B 25FEB21

39°42'N-87°40'W

EDGAR COUNTY (PRG)

RNAV (GPS) RWY 18

PARIS, ILLINOIS

AL-6298 (FAA)

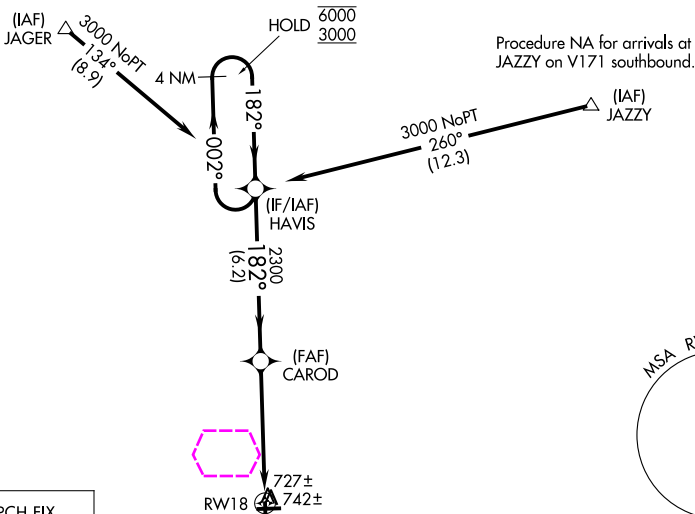
25331

WAAS CH 82639 W18A	APP CRS 182°	Rwy Ldg TDZE Apt Elev	3200 654 654
--	------------------------	-----------------------------	---

RNAV (GPS) RWY 18

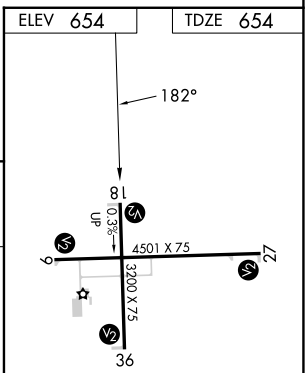
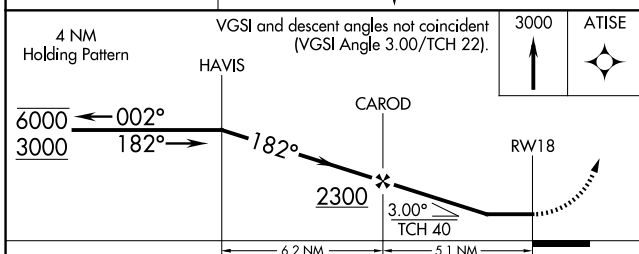
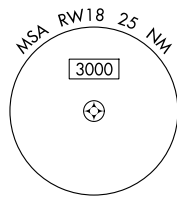
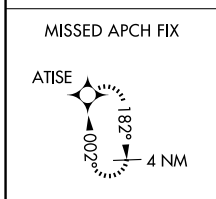
EDGAR COUNTY (PRG)

RNP APCH.		MISSED APPROACH: Climb to 3000 direct ATISE and hold.
Rwy 18 helicopter visibility reduction below 1 SM NA. Straight-in Rwy 18 NA at night, Circling Rwy 18 NA at night.		
AWOS-3 124.175	HULMAN APP CON 125.45 339.8	UNICOM 123.0 (CTAF) 1



EC-3, 127 NOV 2025 to 25 DEC 2025

EC-3, 27 NOV 2025 to 25 DEC 2025



CATEGORY	A	B	C	D
LP MDA		980-1	326 (400-1)	
LNAV MDA		1000-1	346 (400-1)	
CIRCLING	1080-1 426 (500-1)	1120-1 466 (500-1)	1200-1½ 546 (600-1½)	1320-2 666 (700-2)

REIL Rwy 27
MIRL Rwy 9-27 and 18-36 1

PARIS, ILLINOIS
Orig-B 25FEB21

39°42'N-87°40'W

EDGAR COUNTY (PRG) RNAV (GPS) RWY 18