

BURLINGTON/MOUNT VERNON, WASHINGTON

AL-6147 (FAA)

25163

WAAS CH 70407 W29A	APP CRS 291°	Rwy Ldg TDZE Apt Elev	5480 127 145
--	------------------------	-----------------------------	---

RNAV (GPS) RWY 29

SKAGIT RGNL (BVS)

RNP APCH.

▼ For uncompensated Baro-VNAV systems, LNAV/VNAV NA below -15°C or above 54°C.
▲ Baro-VNAV and VDP NA when using Friday Harbor altimeter setting. When local altimeter setting not received use Friday Harbor altimeter setting; increase LPV DA to 438 feet, LNAV/VNAV DA to 536 feet and all Cats visibility ¼ SM; increase all MDA 60 feet.

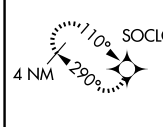
MISSED APPROACH: Climb to 4000 direct SOCLO and hold, continue climb-in-hold to 4000.

AWOS-3
121.125

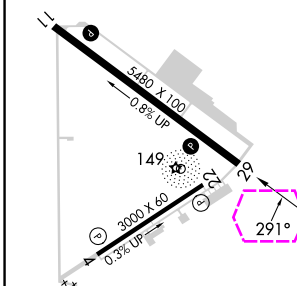
WHIDBEY APP CON
120.7 270.8

UNICOM
123.075 (CTAF)

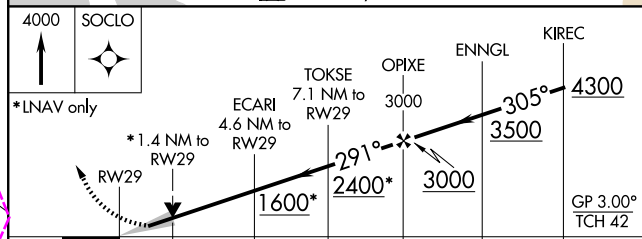
MISSED APCH FIX



ELEV 145 TDZE 127



LIRL Rwy 4-22
REIL Rws 11 and 29
MIRL Rwy 11-29



CATEGORY	A	B	C	D
LPV DA	377-7/8		250 (300-7/8)	
LNAV/VNAV DA	475-1¼		348 (400-1¼)	
LNAV MDA	580-1	453 (500-1)	580-1¾	453 (500-1¾)

BURLINGTON/MOUNT VERNON, WASHINGTON

Amdt 2A 18JUL19

48°28'N-122°25'W

RNAV (GPS) RWY 29

SKAGIT RGNL (BVS)

NW-1, 30 OCT 2025 to 27 NOV 2025

NW-1, 30 OCT 2025 to 27 NOV 2025

BURLINGTON/MOUNT VERNON, WASHINGTON

AL-6147 (FAA)

25331

WAAS CH 70407 W29A	APP CRS 291°	Rwy Ldg TDZE Apt Elev	5480 127 145
--	------------------------	-----------------------------	---

RNAV (GPS) RWY 29

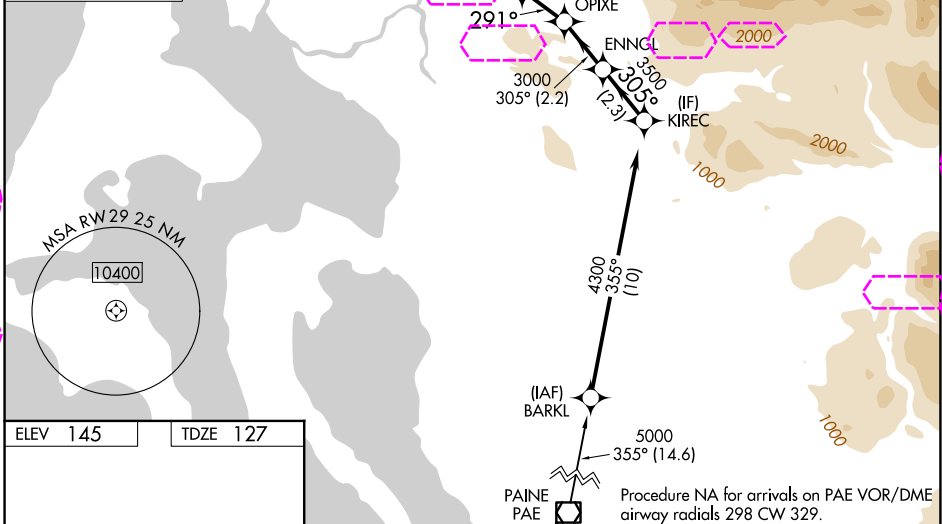
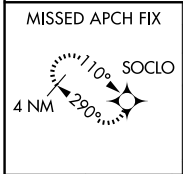
SKAGIT RGNL (BVS)

RNP APCH.

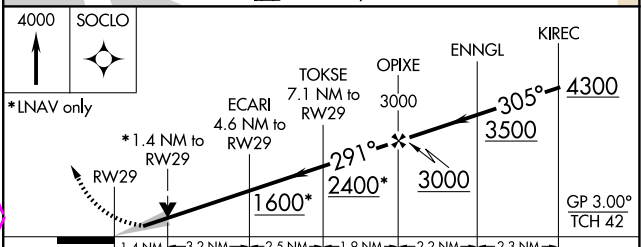
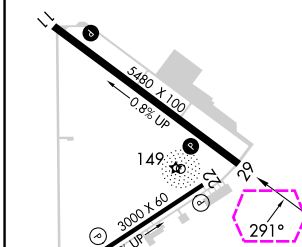
▼ For uncompensated Baro-VNAV systems, LNAV/VNAV NA below -15°C or above 54°C.
▲ Baro-VNAV and VDP NA when using Friday Harbor altimeter setting. When local altimeter setting not received use Friday Harbor altimeter setting; increase LPV DA to 438 feet, LNAV/VNAV DA to 536 feet and all Cats visibility ¼ SM; increase all MDA 60 feet.

MISSED APPROACH: Climb to 4000 direct SOCLO and hold, continue climb-in-hold to 4000.

AWOS-3 121.125	WHIDBEY APP CON 120.7 270.8	UNICOM 123.075 (CTAF)
--------------------------	---------------------------------------	---------------------------------



ELEV 145	TDZE 127
----------	----------



CATEGORY	A	B	C	D
LPV DA	377-7/8		250 (300-7/8)	
LNAV/VNAV DA	475-1¼		348 (400-1¼)	
LNAV MDA	580-1	453 (500-1)	580-1¾	453 (500-1¾)

LIRL Rwy 4-22
 REIL Rws 11 and 29
 MIRL Rwy 11-29

BURLINGTON/MOUNT VERNON, WASHINGTON

Amdt 2A 18JUL19

48°28'N-122°25'W

RNAV (GPS) RWY 29

SKAGIT RGNL (BVS)

NW-1, 27 NOV 2025 to 25 DEC 2025

NW-1, 27 NOV 2025 to 25 DEC 2025