

WAAS CH 53500 W11A	APP CRS 110°	Rwy Ldg TDZE 145 Apt Elev 145	5480
--	------------------------	---	-------------

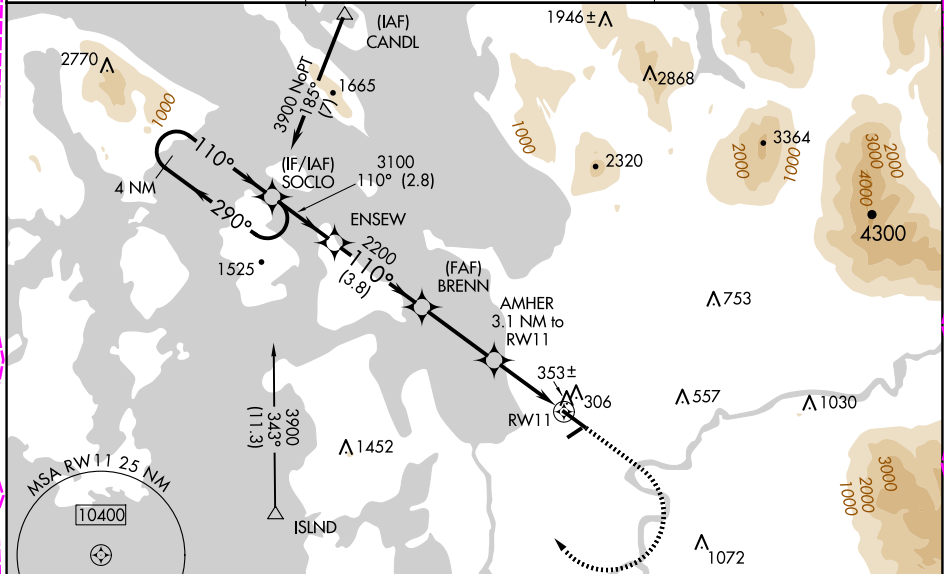
RNAV (GPS) RWY 11

SKAGIT RGNL (BVS)

⚠ Circling to Rwy 04 NA at night. For uncompensated Baro-VNAV systems, LNAV/VNAV NA below -15°C (5°F) or above 54°C (130°F). Baro-VNAV and VDP NA when using Friday Harbor altimeter setting. DME/DME RNP-0.3 NA. When local altimeter setting not received use Friday Harbor altimeter setting: increase LPV DA to 561 feet, LNAV/VNAV DA to 710 feet and all Cats visibilities ¼ SM; increase all MDA 60 feet and Cats C and D visibility ¼ SM. Helicopter visibility reduction below ¾ SM NA.

MISSED APPROACH: Climb to 1000 then climbing right turn to 3900 direct SOCLO and hold, continue climb-in-hold to 3900.

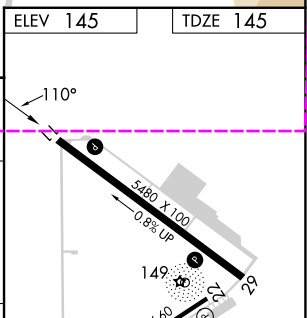
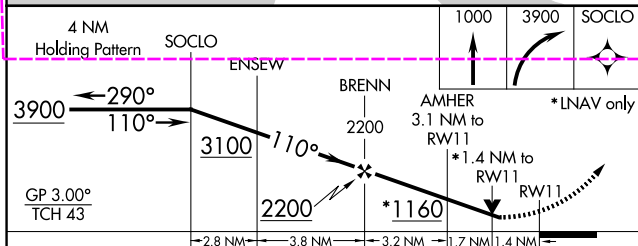
AWOS-3 121.125	WHIDBEY APP CON 120.7 270.8	UNICOM 123.075 (CTAF)
--------------------------	---------------------------------------	---------------------------------



NW-1, 30 OCT 2025 to 27 NOV 2025

NW-1, 30 OCT 2025 to 27 NOV 2025

ELEV 145	TDZE 145
----------	----------



CATEGORY	A	B	C	D
LPV DA		500-1¼	355 (400-1¼)	
LNAV/VNAV DA		649-1¾	504 (600-1¼)	
LNAV MDA	620-1	475 (500-1)	620-1¾ 475 (500-1¾)	700-1½ 555 (600-1½)
CIRCLING	680-1 535 (600-1)	700-1 555 (600-1)	700-1½ 555 (600-1½)	1000-2¾ 855 (900-2¾)

LURL Rwy 4-22
REIL Rws 11 and 29
MIRL Rwy 11-29

WAAS CH 53500 W11A	APP CRS 110°	Rwy Ldg 5480
		TDZE 145
		Apt Elev 145

RNAV (GPS) RWY 11

SKAGIT RGNL (BVS)

⚠ Circling to Rwy 04 NA at night. For uncompensated Baro-VNAV systems, LNAV/VNAV NA below -15°C (5°F) or above 54°C (130°F). Baro-VNAV and VDP NA when using Friday Harbor altimeter setting. DME/DME RNP-0.3 NA. When local altimeter setting not received use Friday Harbor altimeter setting: increase LPV DA to 561 feet, LNAV/VNAV DA to 710 feet and all Cats visibilities ¼ SM; increase all MDA 60 feet and Cats C and D visibility ¼ SM. Helicopter visibility reduction below ¾ SM NA.

MISSED APPROACH: Climb to 1000 then climbing right turn to 3900 direct SOCL0 and hold, continue climb-in-hold to 3900.

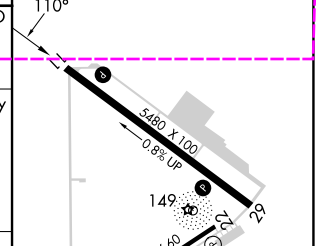
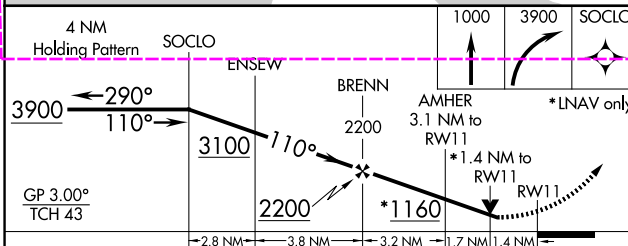
AWOS-3 121.125	WHIDBEY APP CON 120.7 270.8	UNICOM 123.075 (CTAF)
--------------------------	---------------------------------------	---------------------------------



NW-1, 127 NOV 2025 to 25 DEC 2025

NW-1, 127 NOV 2025 to 25 DEC 2025

ELEV 145	TDZE 145
----------	----------



CATEGORY	A	B	C	D
LPV DA		500-1¼	355 (400-1¼)	
LNAV/VNAV DA		649-1¾	504 (600-1¼)	
LNAV MDA	620-1	475 (500-1)	620-1¾ 475 (500-1¾)	700-1½ 555 (600-1½)
CIRCLING	680-1 535 (600-1)	700-1 555 (600-1)	700-1½ 555 (600-1½)	1000-2¾ 855 (900-2¾)

LURL Rwy 4-22
REIL Rws 11 and 29
MIRL Rwy 11-29