

LARNED, KANSAS

AL-6059 (FAA)

23278

WAAS CH <b>82020</b> <b>W35A</b>	APP CRS <b>352°</b>	Rwy Idg TDZE Apt Elev	<b>4201</b> <b>2012</b> <b>2012</b>
--	------------------------	-----------------------------	---

# RNAV (GPS) RWY 35

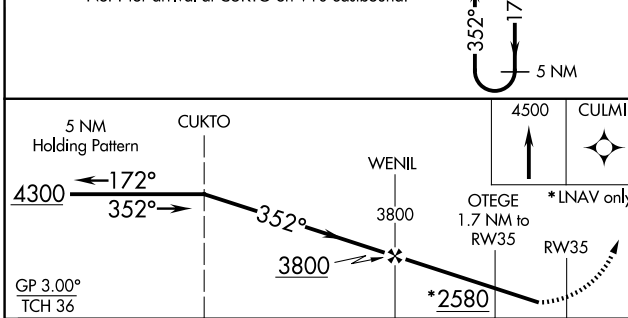
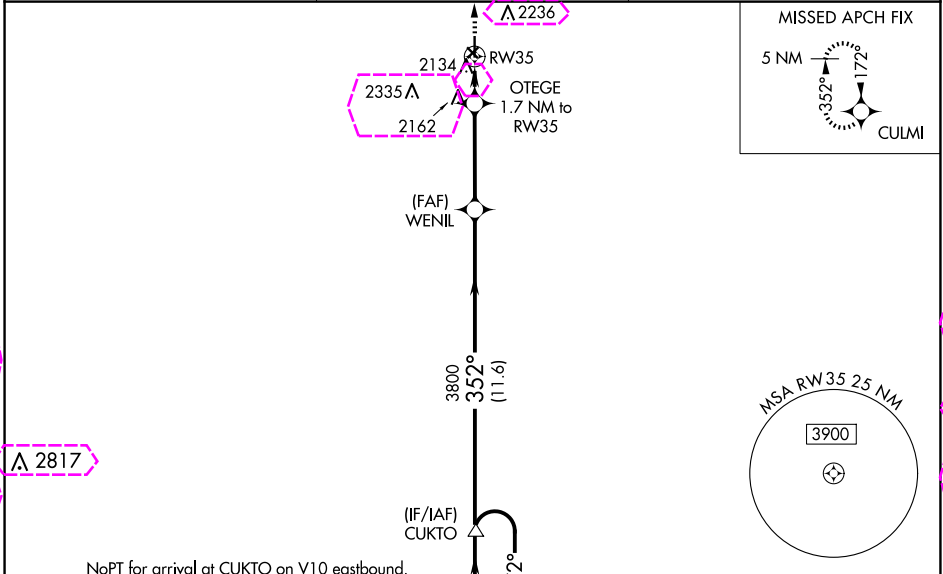
LARNED-PAWNEE COUNTY (LQR)

RNP APCH.

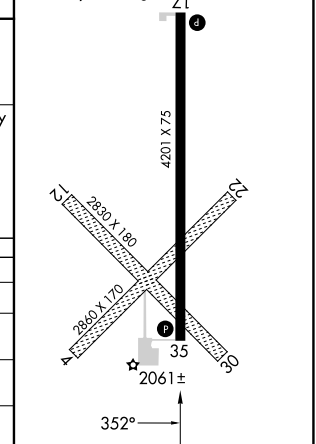
Baro-VNAV NA when using Great Bend altimeter setting. For uncompensated Baro-VNAV systems, LNAV/VNAV NA below -18°C or above 54°C. Rwy 35 helicopter visibility reduction below 1 SM NA. When local altimeter setting not received, use Great Bend altimeter setting and increase all DA 49 feet and LNAV/VNAV all Cats visibility 1/8 SM; increase all MDA 60 feet and increase LNAV Cat C and Circling Cat C visibility 1/4 SM. Circling NA to Rwys 4, 12, 22 and 30. Procedure NA at night.

MISSED APPROACH:  
Climb to 4500 direct CULMI and hold.

<b>AWOS-2</b> <b>119.875</b>	KANSAS CITY CENTER <b>124.4 322.4</b>	UNICOM <b>122.8 (CTAF)</b>
---------------------------------	--	-------------------------------



ELEV 2012	TDZE 2012
REIL Rwys 17 and 35	
MIRL Rwy 17-35	



CATEGORY	A	B	C	D
LPV DA	2262-1	250 (300-1)		NA
LNAV/VNAV DA	2337-1 1/8	325 (400-1 1/8)		NA
LNAV MDA	2420-1	408 (500-1)	2420-1 1/2 408 (500-1 1/2)	NA
CIRCLING	2500-1 488 (500-1)	2600-1 588 (600-1)	2640-1 3/4 628 (700-1 3/4)	NA

LARNED, KANSAS  
Orig-C 14JUL22

38°13'N-99°05'W

# LARNED-PAWNEE COUNTY (LQR)

## RNAV (GPS) RWY 35

NC-2: 30 OCT 2025 to 27 NOV 2025

NC-2: 30 OCT 2025 to 27 NOV 2025

LARNED, KANSAS

AL-6059 (FAA)

25331

WAAS CH <b>82020</b> <b>W35A</b>	APP CRS <b>352°</b>	Rwy Ldg TDZE Apt Elev	<b>4201</b> <b>2012</b> <b>2012</b>
--	------------------------	-----------------------------	---

# RNAV (GPS) RWY 35

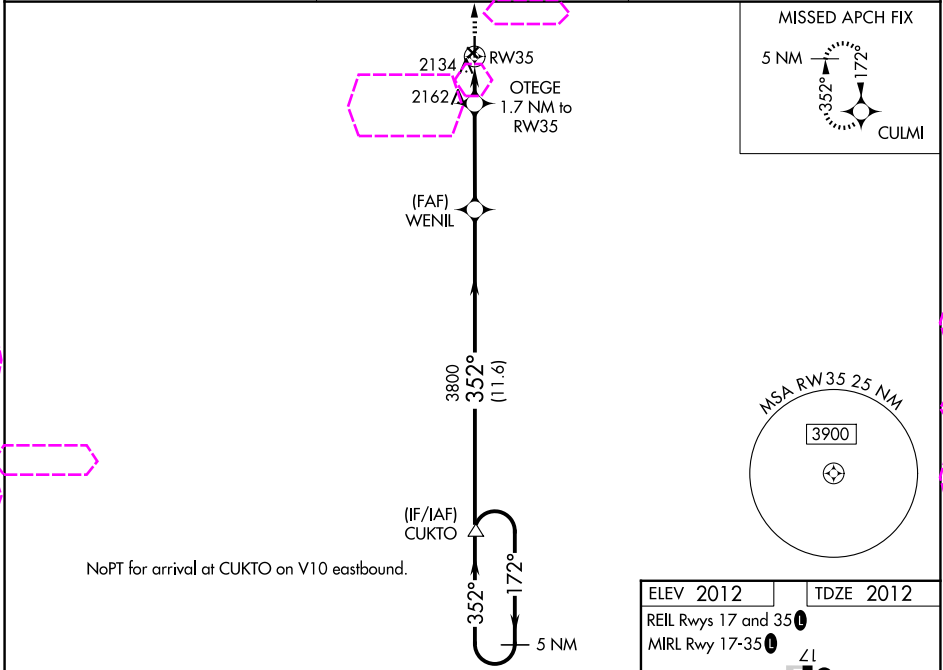
LARNED-PAWNEE COUNTY (L.Q.R.)

RNP APCH.

Baro-VNAV NA when using Great Bend altimeter setting. For uncompensated Baro-VNAV systems, LNAV/VNAV NA below -18°C or above 54°C. Rwy 35 helicopter visibility reduction below 1 SM NA. When local altimeter setting not received, use Great Bend altimeter setting and increase all DA 49 feet and LNAV/VNAV all Cats visibility 1/8 SM; increase all MDA 60 feet and increase LNAV Cat C and Circling Cat C visibility 1/4 SM. Circling NA to Rwy 4, 12, 22 and 30. Procedure NA at night.

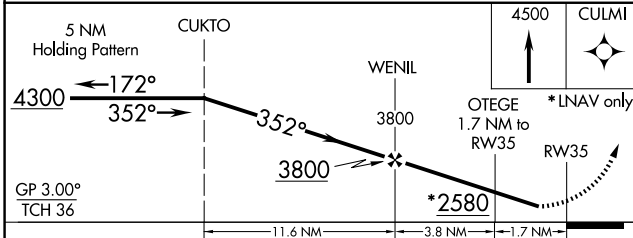
MISSED APPROACH:  
Climb to 4500 direct CULMI and hold.

<b>AWOS-3PT</b> <b>119.875</b>	KANSAS CITY CENTER <b>124.4 322.4</b>	UNICOM <b>122.8 (CTAF)</b>
-----------------------------------	--	-------------------------------



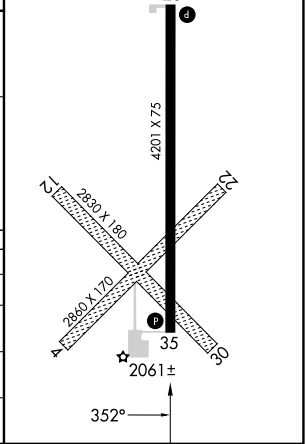
NC-2: 127 NOV 2025 to 25 DEC 2025

NC-2: 27 NOV 2025 to 25 DEC 2025



ELEV 2012	TDZE 2012
REIL Rws 17 and 35	
MIRL Rwy 17-35	

CATEGORY	A	B	C	D
LPV DA	2262-1	250 (300-1)		NA
LNAV/VNAV DA	2337-1 1/8	325 (400-1 1/8)		NA
LNAV MDA	2420-1	408 (500-1)	2420-1 1/2 408 (500-1 1/2)	NA
CIRCLING	2500-1 488 (500-1)	2600-1 588 (600-1)	2640-1 3/4 628 (700-1 3/4)	NA



LARNED, KANSAS  
Orig-C 14JUL22

38°13'N-99°05'W

# LARNED-PAWNEE COUNTY (L.Q.R.) RNAV (GPS) RWY 35