

LARNED, KANSAS

AL-6059 (FAA)

23278

APP CRS	Rwy Idg	4201
172°	TDZE	2009
	Apt Elev	2012

RNAV (GPS) RWY 17

LARNED-PAWNEE COUNTY (LQR)

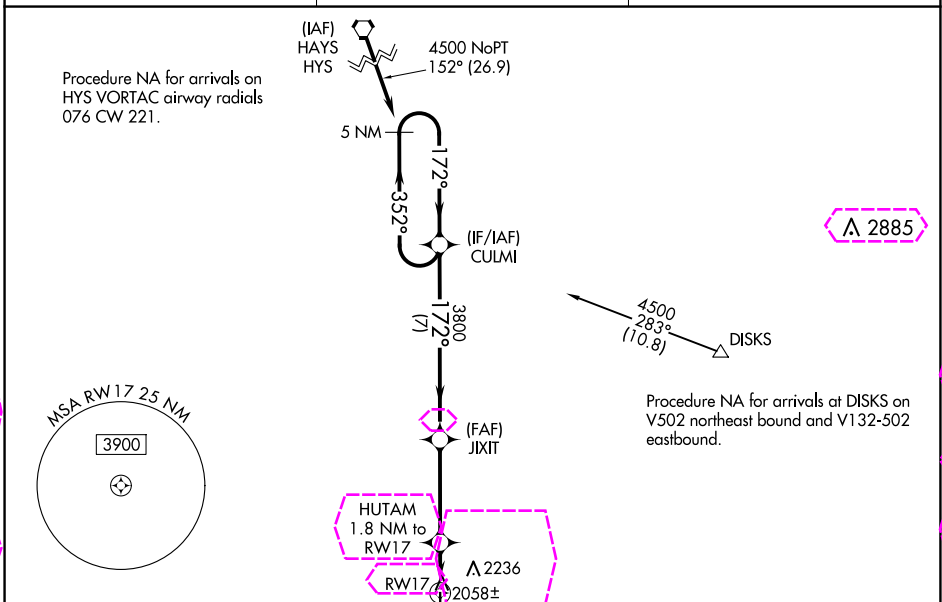
▼ DME/DME RNP-0.3 NA. Procedure NA at night. Visibility reduction by helicopters NA. When local altimeter setting not received, use Great Bend altimeter setting: increase all MDA 60 feet and Circling Cat C visibility ¼ mile. Circling NA to Rwys 4, 12, 22 and 30.

MISSED APPROACH: Climb to 4300 direct CUKTO and hold.

AWOS-2
119.875

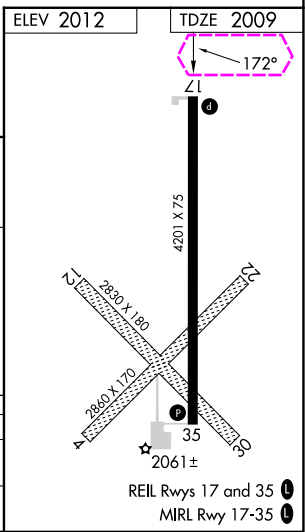
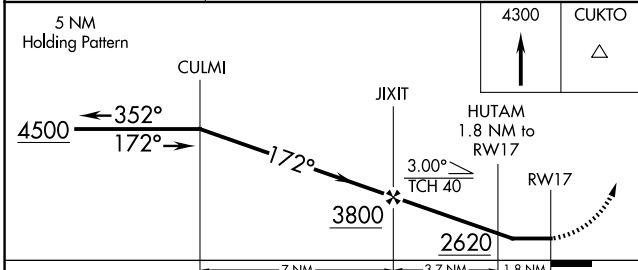
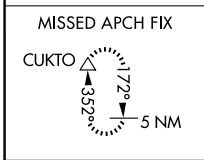
KANSAS CITY CENTER
124.4 322.4

UNICOM
122.8 (CTAF)



NC-2 30 OCT 2025 to 27 NOV 2025

NC-2 30 OCT 2025 to 27 NOV 2025



CATEGORY	A	B	C	D
LNVA MDA	2320-1 311 (400-1)			NA
CIRCLING	2500-1 488 (500-1)	2600-1 588 (600-1)	2640-1¾ 628 (700-1¾)	NA

LARNED, KANSAS
Orig-B 14JUL22

38°13'N-99°05'W

RNAV (GPS) RWY 17

LARNED, KANSAS

AL-6059 (FAA)

25331

APP CRS	Rwy Ldg	4201
172°	TDZE	2009
	Apt Elev	2012

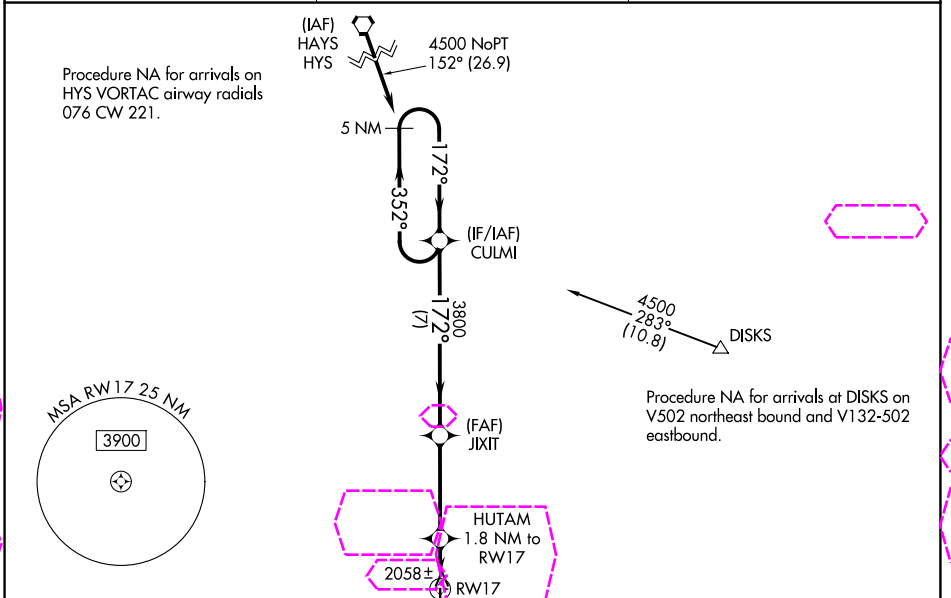
RNAV (GPS) RWY 17

LARNED-PAWNEE COUNTY (LQR)

▼ DME/DME RNP-0.3 NA. Procedure NA at night. Visibility reduction by helicopters NA. When local altimeter setting not received, use Great Bend altimeter setting: increase all MDA 60 feet and Circling Cat C visibility 1/4 mile. Circling NA to Rwy's 4, 12, 22 and 30.

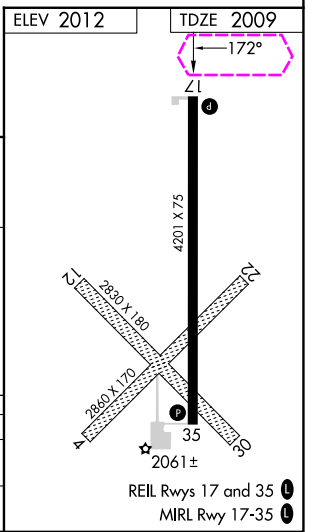
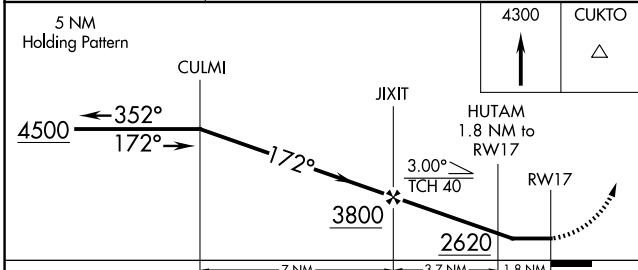
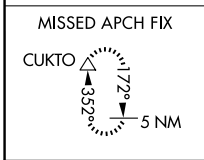
MISSED APPROACH: Climb to 4300 direct CUKTO and hold.

AWOS-3PT 119.875	KANSAS CITY CENTER 124.4 322.4	UNICOM 122.8 (CTAF)
-----------------------------------	---	--------------------------------------



NC-2, 27 NOV 2025 to 25 DEC 2025

NC-2, 27 NOV 2025 to 25 DEC 2025



CATEGORY	A	B	C	D
LNVA MDA	2320-1 311 (400-1)			NA
CIRCLING	2500-1 488 (500-1)	2600-1 588 (600-1)	2640-1 3/4 628 (700-1 3/4)	NA

LARNED, KANSAS
Orig-B 14JUL22

38°13'N-99°05'W

LARNED-PAWNEE COUNTY (LQR)
RNAV (GPS) RWY 17