

CARROLLTON, OHIO

AL-5994 (FAA)

23222

VOR/DME BSV <b>114.05</b> Chan <b>87</b> (Y)	APP CRS <b>127°</b>	Rwy Idg TDZE Apt Elev <b>1164</b>	<b>N/A</b> <b>N/A</b>
--	------------------------	---	--------------------------

VOR-A

CARROLL COUNTY-TOLSON (T'SO)

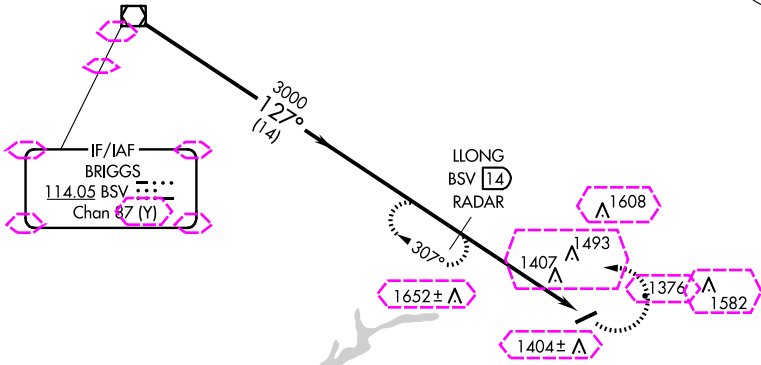
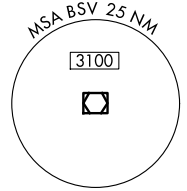
DME or RADAR required.

Procedure NA at night. Use Akron-Canton altimeter setting; when not received, use New Philadelphia altimeter setting and increase MDA 20 feet.

MISSED APPROACH: Climbing left turn to 3000 on BSV VOR/DME R-127 to LLONG/BSV 14 DME/RADAR and hold.

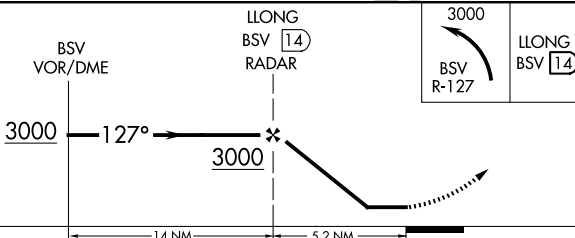
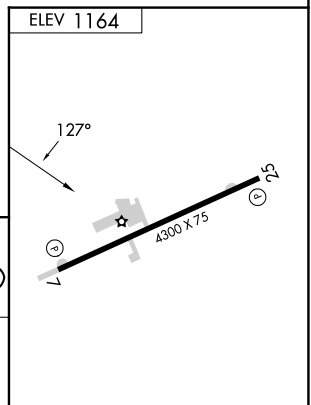
CLEVELAND APP CON ★  
**125.5 371.875**

UNICOM  
**122.7** (CTAF) **0**



EC-2, 30 OCT 2025 to 27 NOV 2025

EC-2, 30 OCT 2025 to 27 NOV 2025



REIL Rwys 7 and 25 **0**  
MIRL Rwy 7-25 **0**

CATEGORY	A	B	C	D	FAF to MAP 5.2 NM					
<b>CIRCLING</b>	1940-1	777 (800-1)		NA	Knots	60	90	120	150	180
					Min:Sec	5:12	3:28	2:36	2:05	1:44

CARROLLTON, OHIO  
Amdt 1C 11AUG22

40°34'N-81°05'W

CARROLL COUNTY-TOLSON (T'SO)

VOR-A

CARROLLTON, OHIO

AL-5994 (FAA)

25331

VOR/DME BSV <b>114.05</b> Chan <b>87</b> (Y)	APP CRS <b>127°</b>	Rwy Ldg TDZE Apt Elev <b>1164</b>	<b>N/A</b> <b>N/A</b> <b>1164</b>
--	------------------------	---	---

VOR-A

CARROLL COUNTY/TOLSON (T50)

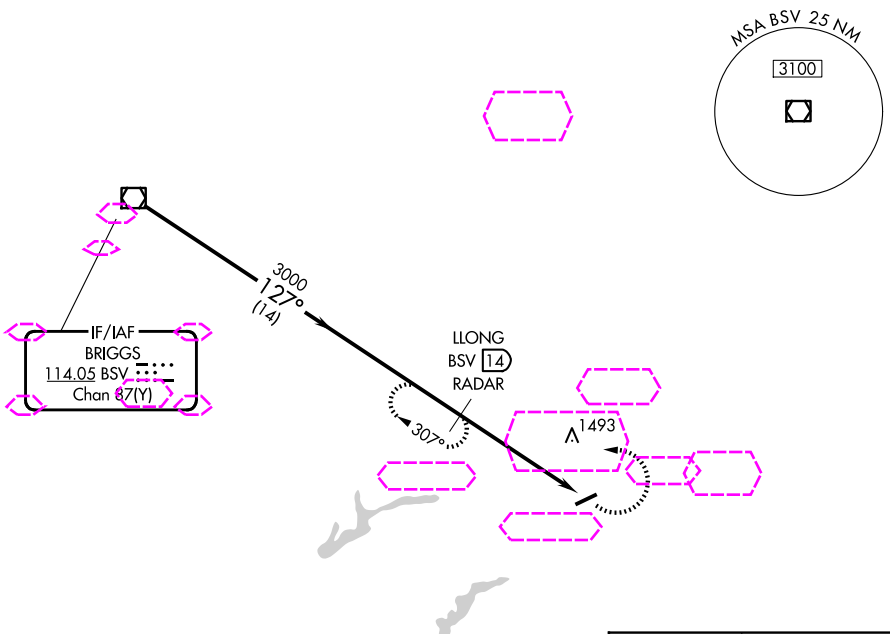
DME or RADAR required.

Procedure NA at night. Use Akron-Canton altimeter setting; when not received, use New Philadelphia altimeter setting and increase MDA 20 feet.

MISSED APPROACH: Climbing left turn to 3000 on BSV VOR/DME R-127 to LLONG/BSV 14 DME/RADAR and hold.

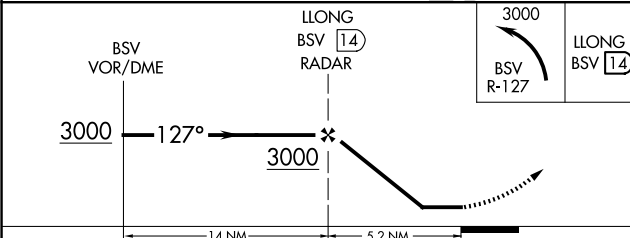
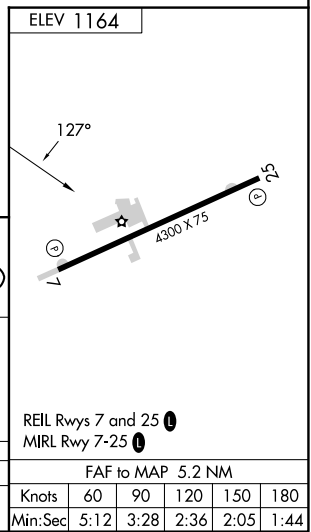
CLEVELAND APP CON ★  
**125.5 371.875**

UNICOM  
**122.7** (CTAF) **0**



EC-2, 27 NOV 2025 to 25 DEC 2025

EC-2, 27 NOV 2025 to 25 DEC 2025



CATEGORY	A	B	C	D	FAF to MAP 5.2 NM					
<b>CIRCLING</b>	1940-1	777 (800-1)		NA	Knots	60	90	120	150	180
					Min:Sec	5:12	3:28	2:36	2:05	1:44

CARROLLTON, OHIO  
Amdt 1C 11AUG22

40°34'N-81°05'W

CARROLL COUNTY/TOLSON (T50)

VOR-A