

BATAVIA, OHIO

AL-5955 (FAA)

21112

WAAS CH <b>58327</b> <b>W04A</b>	APP CRS <b>040°</b>	Rwy Idg TDZE <b>840</b> Apt Elev <b>843</b>	<b>3170</b>
--	------------------------	---	-------------

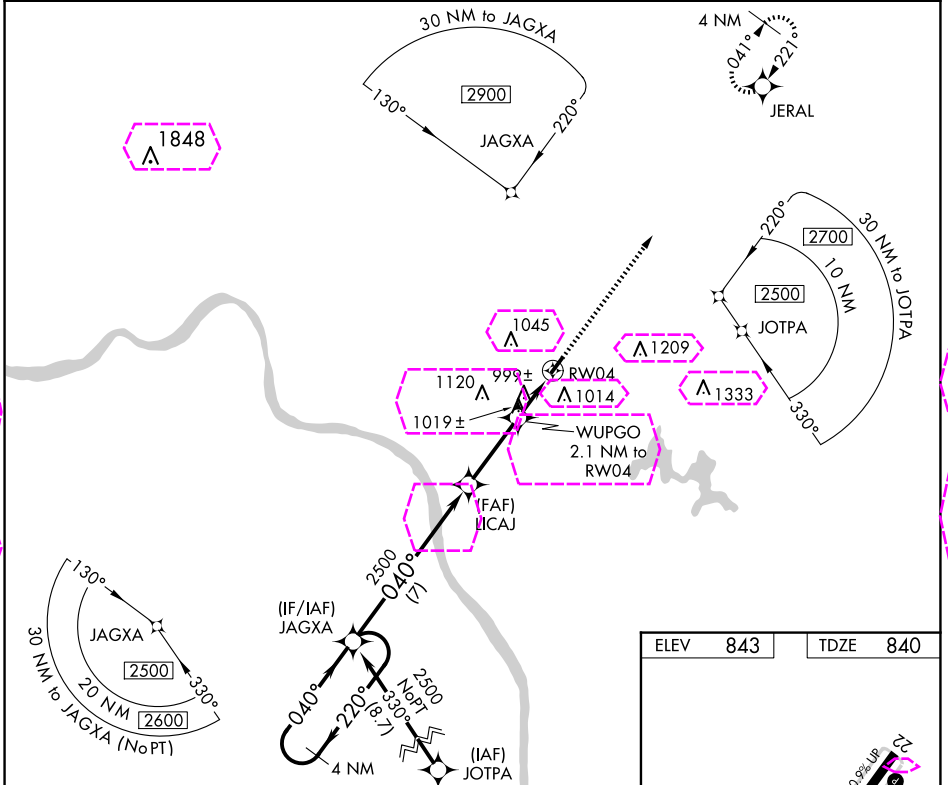
# RNAV (GPS) RWY 4

CLERMONT COUNTY (I69)

**⚠** Circling NA at night. Rwy 4/22 helicopter visibility reduction below 1 SM NA. DME/DME RNP-0.3 NA. When local altimeter setting not received, use Cincinnati Muni/Lunken Fld altimeter setting and increase all MDA 80 feet and all Cat C visibilities 1/2 SM.

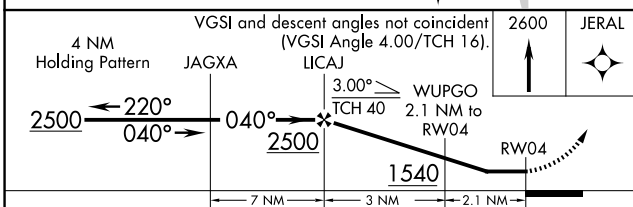
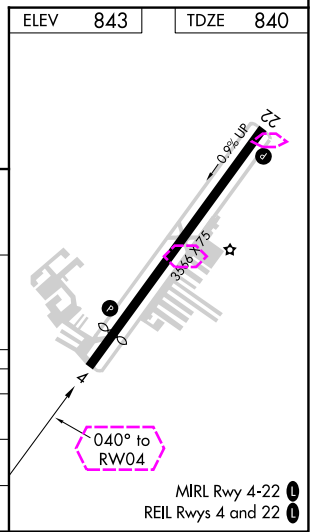
**⚠** MISSED APPROACH: Climb to 2600 direct JERAL and hold.

AWOS-3 <b>127.275</b>	CINCINNATI APP CON <b>121.0 254.25</b>	CLNC DEL <b>124.9</b>	UNICOM <b>122.975 (CTAF) 0</b>
--------------------------	---	--------------------------	-----------------------------------



EC-2, 30 OCT 2025 to 27 NOV 2025

EC-2, 30 OCT 2025 to 27 NOV 2025



CATEGORY	A	B	C	D
LP MDA	1300-1	460 (500-1)	1300-1 3/8 460 (500-1 3/8)	NA
LNAV MDA	1320-1	480 (500-1)	1320-1 3/8 480 (500-1 3/8)	NA
<b>C CIRCLING</b>	1360-1	517 (600-1)	1520-2 677 (700-2)	NA

BATAVIA, OHIO  
Amdt 1C 22JUN17

39°05'N-84°13'W

CLERMONT COUNTY (I69)  
**RNAV (GPS) RWY 4**

