

BATAVIA, OHIO

AL-5955 (FAA)

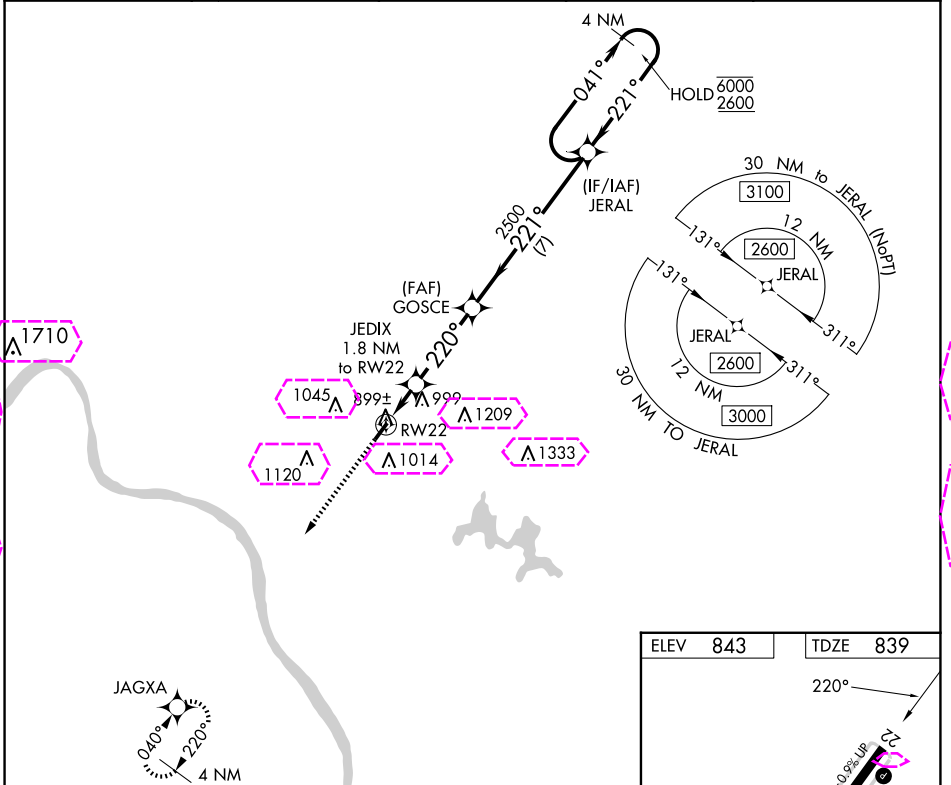
25107

WAAS CH 82227 W22A	APP CRS 220°	Rwy Idg TDZE Apt Elev	3566 839 843
--	------------------------	-----------------------------	---

RNAV (GPS) RWY 22

CLERMONT COUNTY (I69)

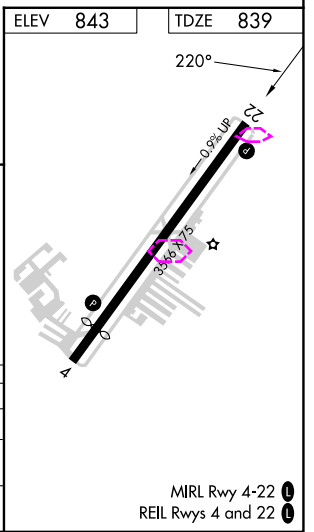
RNP APCH.		MISSED APPROACH: Climb to 2500 direct JAGXA and hold.	
AWOS-3 127.275	CINCINNATI APP CON 121.0 254.25	CLNC DEL 124.9	UNICOM 122.975 (CTAF) 0



EC-2, 30 OCT 2025 to 27 NOV 2025

EC-2, 30 OCT 2025 to 27 NOV 2025

2500	JAGXA	Visual Segment - Obstacles.		JERAL	4 NM Holding Pattern
↑	✧	GOSCE		6000	2600
RW22		JEDIX 1.8 NM to RW22		041° →	← 221°
1420	2500				
1.8	3.4 NM	7 NM			
CATEGORY	A	B	C	D	
LP MDA	1160-1 321 (400-1)			NA	
LNAV MDA	1240-1	401 (400-1)	1240-1½ 401 (400-1½)	NA	
CIRCLING	1320-1 477 (500-1)	1360-1 517 (600-1)	1520-2 677 (700-2)	NA	



BATAVIA, OHIO
Amdt 2 25FEB21

39°05'N-84°13'W

CLERMONT COUNTY (I69)
RNAV (GPS) RWY 22

MIRL Rwy 4-22 0
REIL Rws 4 and 22 0

BATAVIA, OHIO

AL-5955 (FAA)

25331

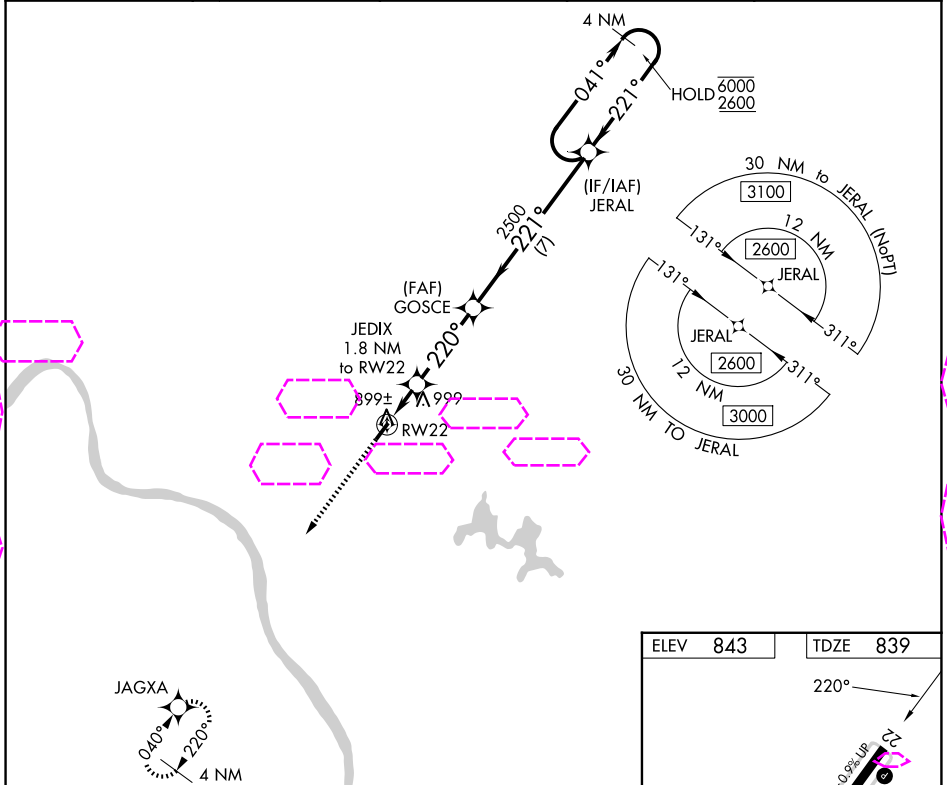
WAAS CH 82227 W22A	APP CRS 220°	Rwy Ldg TDZE 839 Apt Elev 843
--	------------------------	---

RNAV (GPS) RWY 22

CLERMONT COUNTY (I69)

RNP APCH.	MISSED APPROACH: Climb to 2500 direct JAGXA and hold.
-----------	---

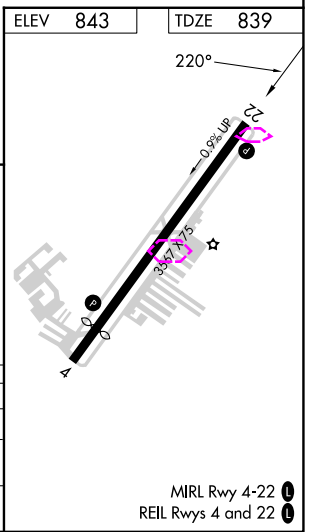
AWOS-3 127.275	CINCINNATI APP CON 121.0 254.25	CLNC DEL 124.9	UNICOM 122.975 (CTAF) 0
--------------------------	---	--------------------------	-----------------------------------



EC-2, 27 NOV 2025 to 25 DEC 2025

EC-2, 27 NOV 2025 to 25 DEC 2025

2500	JAGXA	Visual Segment - Obstacles.	JERAL	4 NM Holding Pattern
↑	✧			
		GOSCE		041° → 6000 ← 221° 2600
		JEDIX 1.8 NM to RW22		
		RW22		
		1.8	3.4 NM	7 NM
		1420	2500	
CATEGORY	A	B	C	D
LP MDA		1160-1	321 (400-1)	NA
LNAV MDA	1240-1	401 (400-1)	1240-1 1/8 401 (400-1 1/8)	NA
CIRCLING	1320-1 477 (500-1)	1360-1 517 (600-1)	1520-2 677 (700-2)	NA



BATAVIA, OHIO
Amdt 2 25FEB21

39°05'N-84°13'W

CLERMONT COUNTY (I69)
RNAV (GPS) RWY 22

MIRL Rwy 4-22 0
REIL Rws 4 and 22 0