

GREENVILLE, MAINE

AL-5918 (FAA)

25163

WAAS CH 40145 W32A	APP CRS 315°	Rwy Ldg TDZE 1392 Apt Elev 1402
--	------------------------	---

RNAV (GPS) RWY 32

GREENVILLE MUNI (3B1)

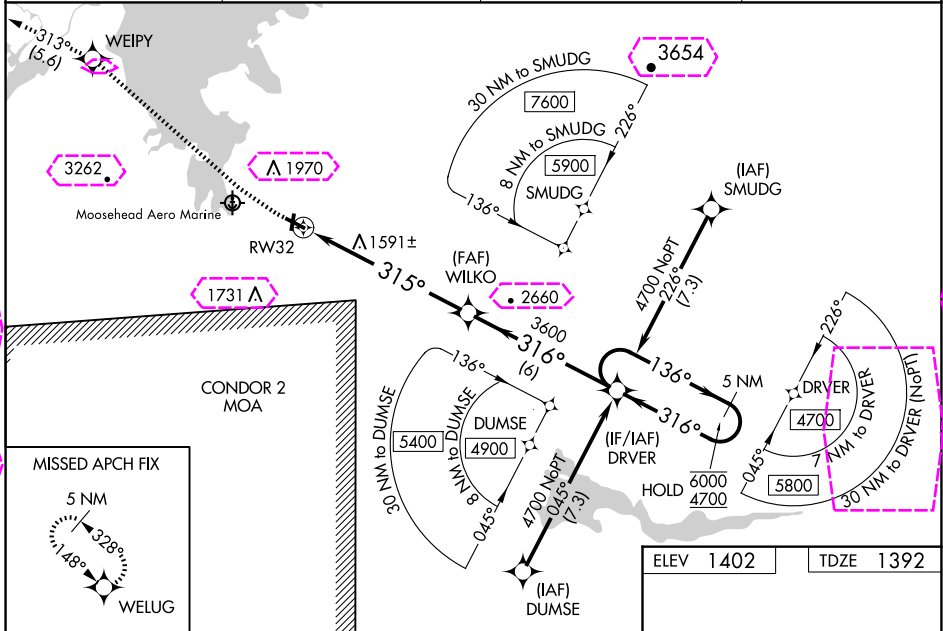
RNP APCH - GPS

NA
-20°C

Circling Rwy 3, 21 NA at night. Baro-VNAV and VDP NA when using Bangor altimeter setting. Rwy 32 helicopter visibility reduction below ¼ SM NA. For uncompensated Baro-VNAV systems, LNAV/VNAV NA below -23°C or above 54°C. When local altimeter not received, use Bangor altimeter setting: increase LPV DA to 1927 feet and all visibilities ½ SM, increase LNAV/VNAV DA to 2095 feet and all visibilities ⅔ SM; increase all MDAs 300 feet and LNAV visibilities Cat A/B ¼ SM and Cat C/D ½ SM, and Circling visibility Cat A/B ¼ SM.

MISSED APPROACH: Climb to 2200 then climbing right turn to 5100 direct WEIPLY and on track 313° to WELUG and hold, continue climb-in-hold to 5100.

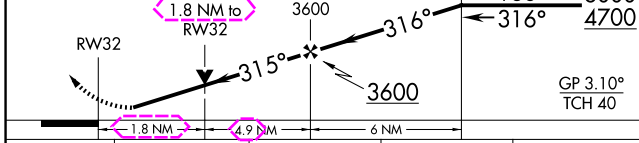
AWOS-A 124.175	BOSTON CENTER 120.25 346.4	CLNC DEL 122.3	UNICOM 122.8 (CTAF) 📻
--------------------------	--------------------------------------	--------------------------	--



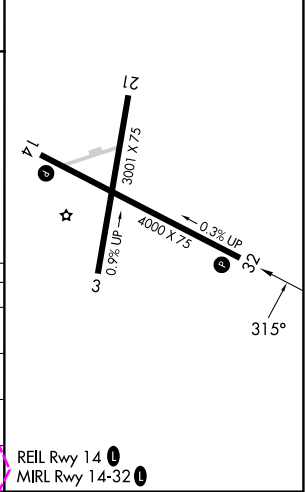
NE-1, 30 OCT 2025 to 27 NOV 2025

NE-1, 30 OCT 2025 to 27 NOV 2025

2200	5100	WEIPLY	tr 313°	WELUG	WILKO	DRIVER	5 NM Holding Pattern
------	------	--------	---------	-------	-------	--------	----------------------



ELEV 1402	TDZE 1392
-----------	-----------



CATEGORY	A	B	C	D
LPV DA		1642-1	250 (300-1)	
LNAV/VNAV DA		1810-1½	418 (500-1½)	
LNAV MDA	2000-1	608 (600-1)	2000-1¾	608 (600-1¾)
CIRCLING	2040-1 638 (700-1)	2300-1¼ 898 (900-1¼)	2440-3 1038 (1100-3)	2660-3 1258 (1300-3)

REIL Rwy 14 **📻**
MIRL Rwy 14-32 **📻**

GREENVILLE, MAINE
Orig 30NOV23

45°28'N-69°33'W

GREENVILLE MUNI (3B1) RNAV (GPS) RWY 32

GREENVILLE, MAINE

AL-5918 (FAA)

25331

WAAS CH 40145 W32A	APP CRS 315°	Rwy Ldg TDZE 1392 Apt Elev 1402
--	------------------------	---

RNAV (GPS) RWY 32

GREENVILLE MUNI (3B1)

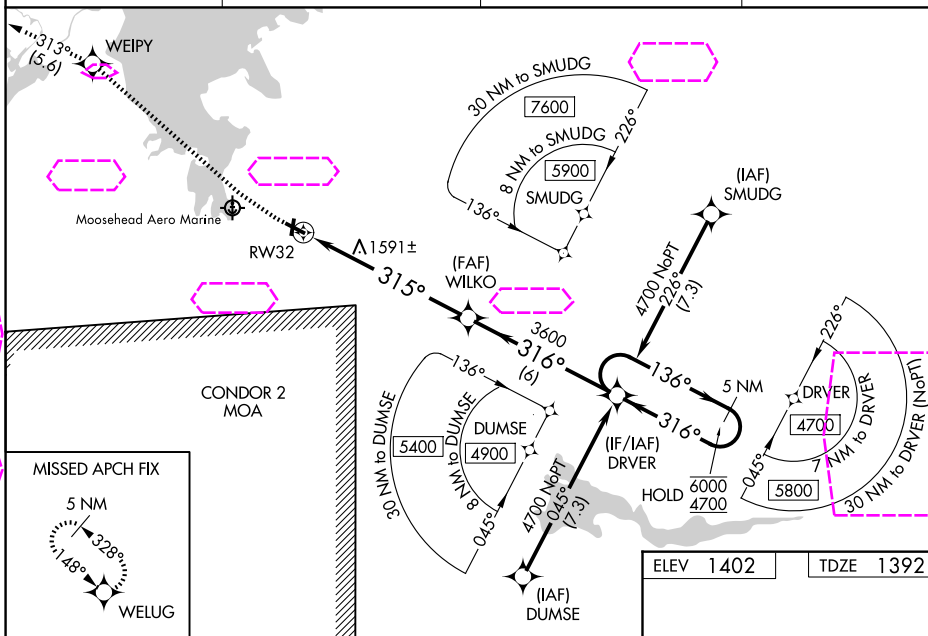
RNP APCH - GPS.

NA
-20°C

Rwy 32 helicopter visibility reduction below 3/4 SM NA. Circling Rwy 3, 21 NA at night. Baro-VNAV NA. VDP NA when using BGR altimeter setting. When local altimeter not received, use BGR altimeter setting: increase LPV DA to 1952 feet and all visibilities 3/8 SM, increase LNAV/VNAV DA to 2145 feet and all visibilities 5/8 SM; increase all MDAs 300 feet and LNAV all visibilities 1 1/8 SM, and Circling visibility Cat A/B 1/4 SM. Circling NA northeast of Rwy 14-32.

MISSED APPROACH: Climb to 2200 then climbing right turn to 5100 direct WEIPY and on track 313° to WELUG and hold, continue climb-in-hold to 5100.

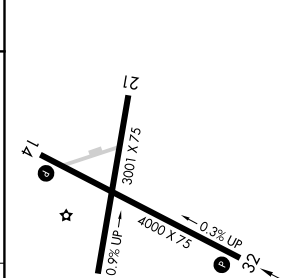
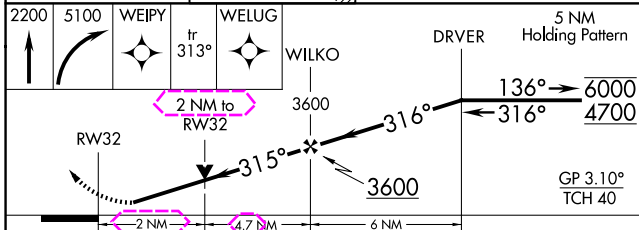
AWOS-A 124.175	BOSTON CENTER 120.25 346.4	CLNC DEL 122.3	UNICOM 122.8 (CTAF) 0
--------------------------	--------------------------------------	--------------------------	--



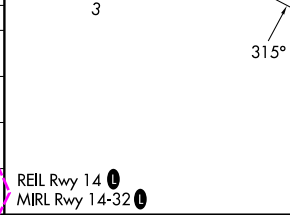
NE-1, 27 NOV 2025 to 25 DEC 2025

NE-1, 27 NOV 2025 to 25 DEC 2025

ELEV 1402	TDZE 1392
-----------	-----------



CATEGORY	A	B	C	D
LPV DA		1667-1	275 (300-1)	
LNAV/VNAV DA		1860-1 3/8	468 (500-1 3/8)	
LNAV MDA	2060-1	668 (700-1)	2060-1 7/8	668 (700-1 7/8)
CIRCLING	2060-1 658 (700-1)	2300-1 1/4 898 (900-1 1/4)	2440-3 1038 (1100-3)	2660-3 1258 (1300-3)



GREENVILLE, MAINE
Orig-A 27NOV25

45°28'N-69°33'W

RNAV (GPS) RWY 32

GREENVILLE MUNI (3B1)

REIL Rwy 14 **0**
MRL Rwy 14-32 **0**