

FRYEBURG, MAINE

AL-5857 (FAA)

25163

WAAS CH 93635 W32A	APP CRS 324°	Rwy Ldg TDZE 448 Apt Elev 455
--	------------------------	---

RNAV (GPS) RWY 32

EASTERN SLOPES RGNL (IZG)

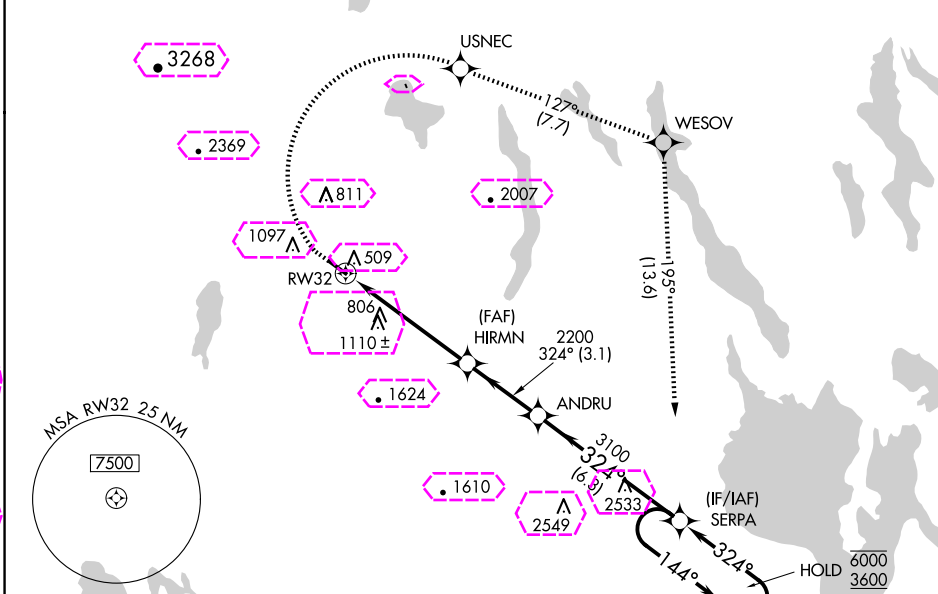
RNP APCH - GPS.

⚠ Rwy 32 helicopter visibility reduction below $\frac{3}{4}$ SM NA. VDP NA when using LEW altimeter setting. Circling Rwy 14 NA at night. When local altimeter setting not received, use LEW altimeter setting and increase LPV DA to 1005 feet and all visibilities $\frac{1}{2}$ SM; increase all MDAs 100 feet and LNAV visibility Cat B/C $\frac{1}{2}$ SM, and Circling visibility Cat B $\frac{1}{4}$ SM.

❄ -28°C

MISSED APPROACH: Climb to 1490 then climbing right turn to 3600 direct USNEC and on track 127° to WESOV and on track 195° and on track 195° to SERPA and hold.

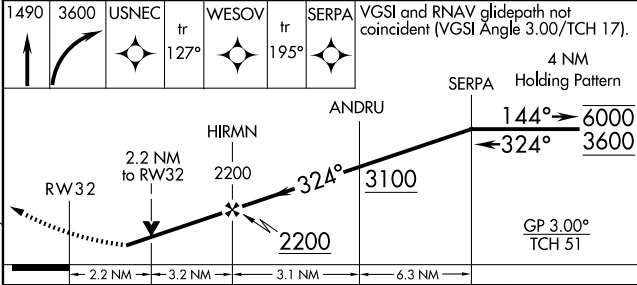
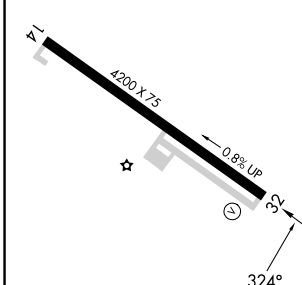
ASOS 135.775	PORTLAND APP CON * 119.75 269.35	UNICOM 122.8 (CTAF)
------------------------	--	-------------------------------



NE-1, 30 OCT 2025 to 27 NOV 2025

NE-1, 30 OCT 2025 to 27 NOV 2025

ELEV 455	TDZE 448
----------	----------



CATEGORY	A	B	C	D
LPV DA	914-1 $\frac{3}{8}$		466 (500-1 $\frac{3}{8}$)	NA
LNAV MDA	1140-1	692 (700-1)	1140-2 692 (700-2)	NA
CIRCLING	1340-1 $\frac{1}{4}$ 885 (900-1 $\frac{1}{4}$)	1400-1 $\frac{1}{2}$ 945 (1000-1 $\frac{1}{2}$)	1560-3 1105 (1200-3)	NA

REIL Rwy 32
MIRL Rwy 14-32

FRYEBURG, MAINE
Amdt 2 12JUN25

43°59'N-70°57'W

RNAV (GPS) RWY 32

EASTERN SLOPES RGNL (IZG)

FRYEBURG, MAINE

AL-5857 (FAA)

25331

WAAS CH 93635 W32A	APP CRS 324°	Rwy Ldg TDZE 448 Apt Elev 455
--	------------------------	---

RNAV (GPS) RWY 32

WHITE MOUNTAIN RGNL (IZG)

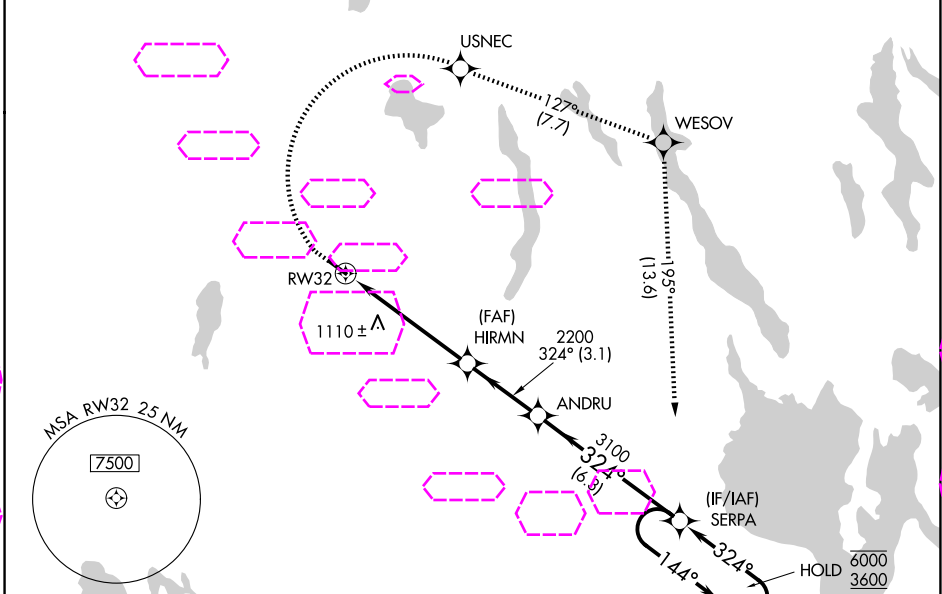
RNP APCH - GPS.

⚠ Rwy 32 helicopter visibility reduction below ¾ SM NA. VDP NA when using LEW altimeter setting. Circling Rwy 14 NA at night. When local altimeter setting not received, use LEW altimeter setting and increase LPV DA to 1005 feet and all visibilities ¼ SM; increase all MDAs 100 feet and LNAV visibility Cat B/C ½ SM, and Circling visibility Cat B ¼ SM.

❄ -28°C

MISSED APPROACH: Climb to 1490 then climbing right turn to 3600 direct USNEC and on track 127° to WESOV and on track 195° to WESOV and on track 195° to SERPA and hold.

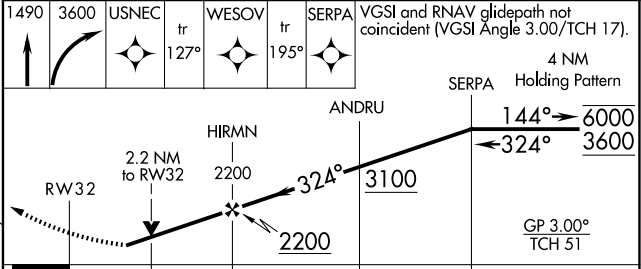
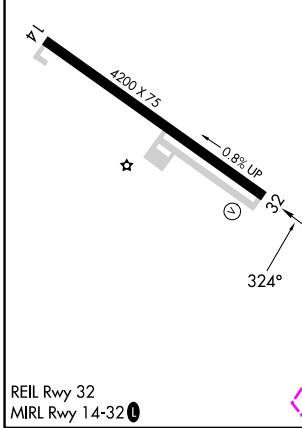
ASOS 135.775	PORTLAND APP CON * 119.75 269.35	UNICOM 122.8 (CTAF)
------------------------	--	-------------------------------



NE-1, 27 NOV 2025 to 25 DEC 2025

NE-1, 27 NOV 2025 to 25 DEC 2025

ELEV 455	TDZE 448
----------	----------



CATEGORY	A	B	C	D
LPV DA	914-1⅜		466 (500-1⅜)	NA
LNAV MDA	1140-1	692 (700-1)	1140-2 692 (700-2)	NA
CIRCLING	1340-1¼ 885 (900-1¼)	1400-1½ 945 (1000-1½)	1560-3 1105 (1200-3)	NA

FRYEBURG, MAINE
MIRL Rwy 14-32

43°59'N-70°57'W

RNAV (GPS) RWY 32

WHITE MOUNTAIN RGNL (IZG)