

(GTLKE4.GTLKE) 24025

AL-5703 (FAA)

LORAIN COUNTY RGNL (LPR)

# GTLKE FOUR DEPARTURE (RNAV)

LORAIN/ELYRIA, OHIO

EC-2, 30 OCT 2025 to 27 NOV 2025

## TOP ALTITUDE: ASSIGNED BY ATC

ASOS  
118.925  
CLNC DEL  
125.7  
CTAF  
122.7  
CLEVELAND DEP CON  
125.35 346.325

## DEPARTURE ROUTE DESCRIPTION

TAKEOFF RUNWAY 7: Climb on heading 073° to 1300, then on heading 360° or as assigned by ATC for RADAR vectors to cross AYYLE at or above 9000, thence....  
TAKEOFF RUNWAY 25: Climb on heading 253° to 1300, then right turn heading 360° or as assigned by ATC for RADAR vectors to cross AYYLE at or above 9000, thence....

....on track 276° to cross BRNN at or below 14000, then on track 285° to GTLKE then on (transition). Maintain ATC assigned altitude, expect filed altitude 10 minutes after departure.

ALPHE TRANSITION (GTLKE4.ALPHE)  
BAGEL TRANSITION (GTLKE4.BAGEL)  
DAIFE TRANSITION (GTLKE4.DAIFE)  
YABRO TRANSITION (GTLKE4.YABRO)

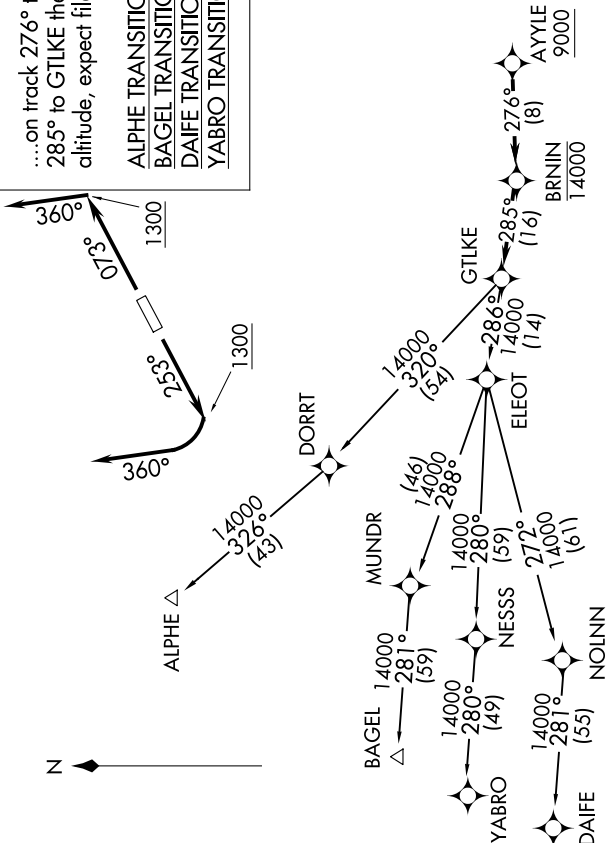
NOTE: RADAR required.

NOTE: RNAV 1.

NOTE: DME/DME/IRU or GPS required.

NOTE: BAGEL TRANSITION: For aircraft landing MDW only, or as assigned by ATC.

NOTE: DAIFE TRANSITION: For aircraft landing ORD only, or as assigned by ATC.



## TAKEOFF MINIMUMS:

Rwys 7, 25: Standard with a minimum climb of 500' per NM to 1300.

NOTE: Chart not to scale.

# GTLKE FOUR DEPARTURE (RNAV)

(GTLKE4.GTLKE) 26MAR20

LORAIN/ELYRIA, OHIO

LORAIN COUNTY RGNL (LPR)

EC-2, 30 OCT 2025 to 27 NOV 2025

(GTLKE5, GTLKE) 25331

AL-5703 (FAA)

LORAIN COUNTY RGNL (LPR)  
LORAIN/ELYRIA, OHIO

# GTLKE FIVE DEPARTURE (RNAV)

EC-2, 127 NOV 2025 to 25 DEC 2025

CLEVELAND DEP CON  
125.35 346.325  
ASOS  
118.925  
CLNC DEL  
125.7  
CTAF  
122.7

**TOP ALTITUDE:  
ASSIGNED BY ATC**

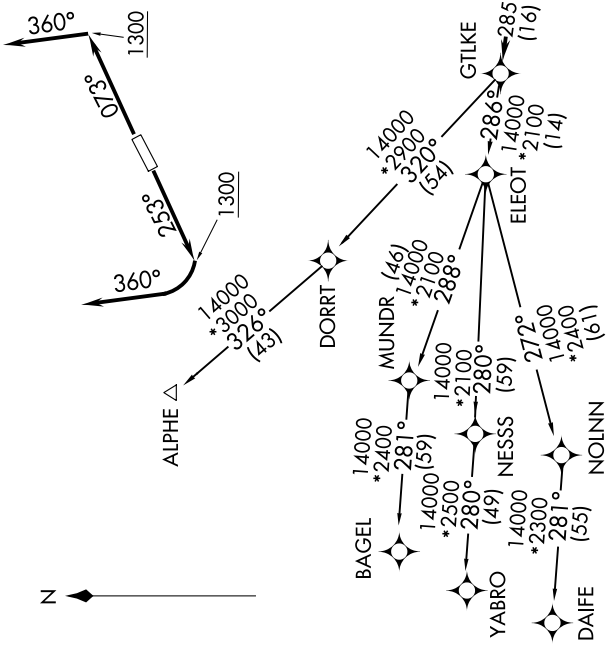
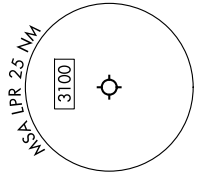
## DEPARTURE ROUTE DESCRIPTION

**TAKEOFF RUNWAY 7:** Climb on heading 073° to 1300, then on heading 360° or as assigned by ATC for RADAR vectors to cross AYYLE at or above 9000, thence.....  
**TAKEOFF RUNWAY 25:** Climb on heading 253° to 1300, then right turn heading 360° or as assigned by ATC for RADAR vectors to cross AYYLE at or above 9000, thence.....

...on track 276° to cross BRNIN at or below 14000, then on track 285° to GTLKE then on (transition). Maintain ATC assigned altitude, expect filed altitude 10 minutes after departure.

ALPHE TRANSITION (GTLKE5.ALPHE)  
BAGEL TRANSITION (GTLKE5.BAGEL)  
DAIFE TRANSITION (GTLKE5.DAIFE)  
YABRO TRANSITION (GTLKE5.YABRO)

RNAV 1 - DME/DME/IRU or GPS.  
RADAR required.



## TAKEOFF MINIMUMS:

Rwys 7, 25: Standard with minimum climb of 500' per NM to 1300.

NOTE: Chart not to scale.

EC-2, 27 NOV 2025 to 25 DEC 2025

(GTLKE5, GTLKE) 27NOV25

LORAIN/ELYRIA, OHIO  
LORAIN COUNTY RGNL (LPR)