

(AHMET4.KKIDS) 24025

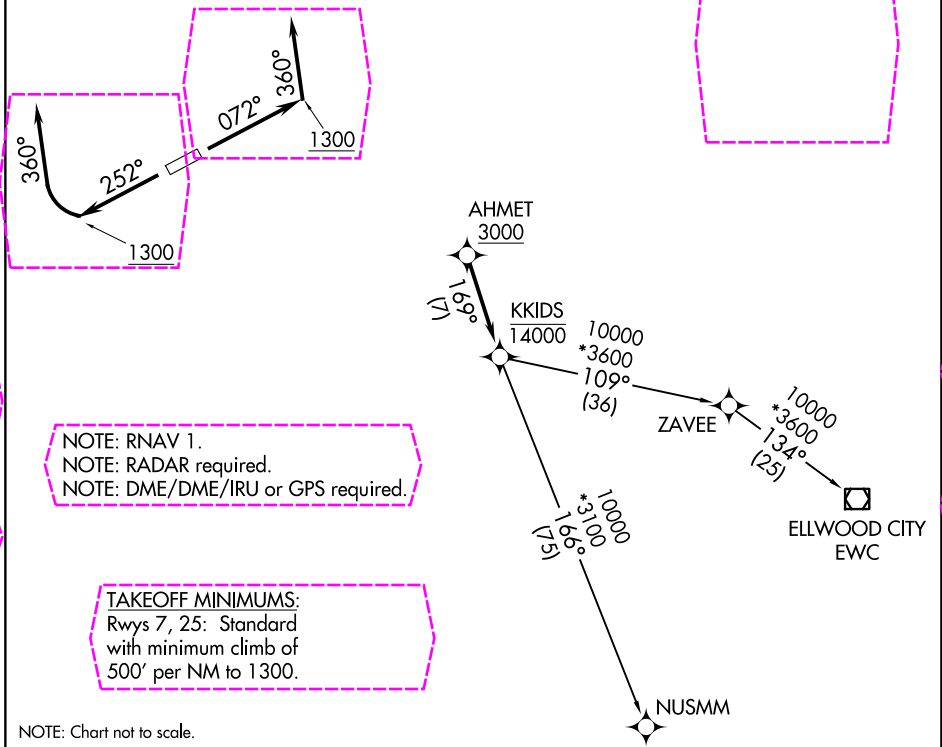
AL-5703 (FAA)

LORAIN COUNTY RGNL (LPR)  
LORAIN/ELYRIA, OHIO

# AHMET FOUR DEPARTURE (RNAV)

ASOS  
118.925  
CLNC DEL  
125.7  
CTAF  
122.7  
CLEVELAND DEP CON  
125.35 346.325

**TOP ALTITUDE:  
ASSIGNED BY ATC**



EC-2, 30 OCT 2025 to 27 NOV 2025

EC-2, 30 OCT 2025 to 27 NOV 2025

NOTE: RNAV 1.  
NOTE: RADAR required.  
NOTE: DME/DME/IRU or GPS required.

**TAKEOFF MINIMUMS:**  
Rwys 7, 25: Standard  
with minimum climb of  
500' per NM to 1300.

NOTE: Chart not to scale.

## DEPARTURE ROUTE DESCRIPTION

**TAKEOFF RUNWAY 7:** Climb on heading 072° to 1300, then on heading 360° or as assigned by ATC for RADAR vectors to cross AHMET at or above 3000, thence....  
**TAKEOFF RUNWAY 25:** Climb on heading 252° to 1300, then right turn on heading 360° or as assigned by ATC for RADAR vectors to cross AHMET at or above 3000, thence....  
....on track 169° to cross KKIDS at or below 14000, then on (transition).  
Maintain altitude assigned by ATC, expect filed altitude ten minutes after departure.

ELLWOOD CITY TRANSITION (AHMET4.EWC)  
NUSMM TRANSITION (AHMET4.NUSMM)

AHMET FOUR DEPARTURE (RNAV)  
(AHMET4.KKIDS) 26MAR20

LORAIN/ELYRIA, OHIO  
LORAIN COUNTY RGNL (LPR)

(AHMET5.KKIDS) 25331

AL-5703 (FAA)

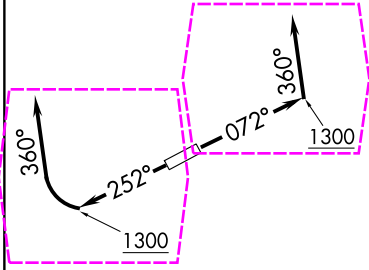
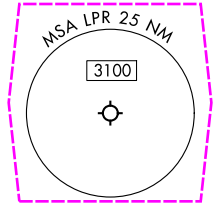
LORAIN COUNTY RGNL (LPR)  
LORAIN/ELYRIA, OHIO

# AHMET FIVE DEPARTURE (RNAV)

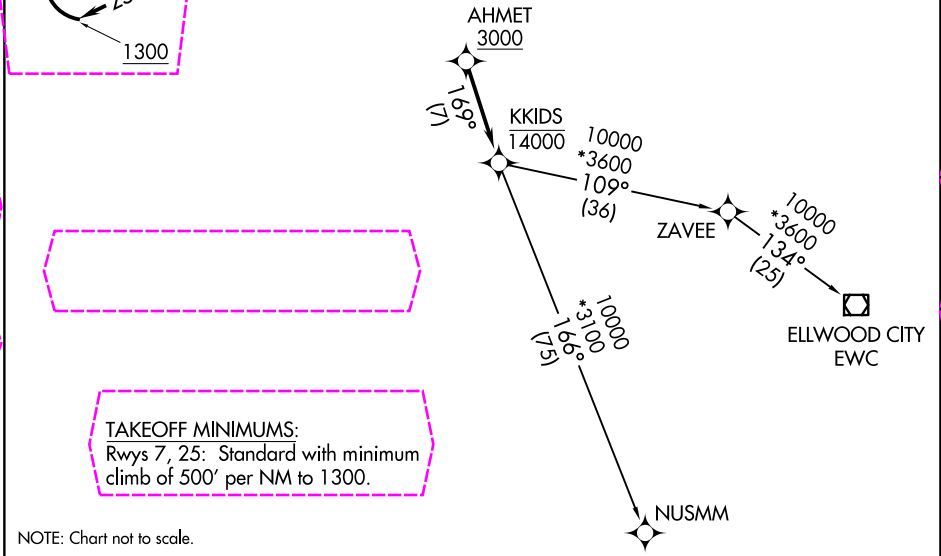
ASOS  
118.925  
CLNC DEL  
125.7  
CTAF  
122.7  
CLEVELAND DEP CON  
125.35 346.325

RNAV 1 - DME/DME/IRU or GPS.  
RADAR required.

**TOP ALTITUDE:  
ASSIGNED BY ATC**



EC-2, 127 NOV 2025 to 25 DEC 2025



EC-2, 27 NOV 2025 to 25 DEC 2025

**TAKEOFF MINIMUMS:**  
Rwys 7, 25: Standard with minimum climb of 500' per NM to 1300.

NOTE: Chart not to scale.

## DEPARTURE ROUTE DESCRIPTION

TAKEOFF RUNWAY 7: Climb on heading 072° to 1300, then on heading 360° or as assigned by ATC for RADAR vectors to cross AHMET at or above 3000, thence....

TAKEOFF RUNWAY 25: Climb on heading 252° to 1300, then right turn on heading 360° or as assigned by ATC for RADAR vectors to cross AHMET at or above 3000, thence....

....on track 169° to cross KKIDS at or below 14000, then on (transition).  
Maintain ATC assigned altitude, expect filed altitude ten minutes after departure.

ELLWOOD CITY TRANSITION (AHMET5.EWC)

NUSMM TRANSITION (AHMET5.NUSMM)

# AHMET FIVE DEPARTURE (RNAV)

(AHMET5.KKIDS) 27NOV25

LORAIN/ELYRIA, OHIO  
LORAIN COUNTY RGNL (LPR)