

GRAND MARAIS, MINNESOTA

AL-5643 (FAA)

21168

WAAS CH 45920 W10A	APP CRS 096°	Rwy Idg TDZE Apt Elev	5002 1803 1803
--	------------------------	-----------------------------	---

RNAV (GPS) RWY 10

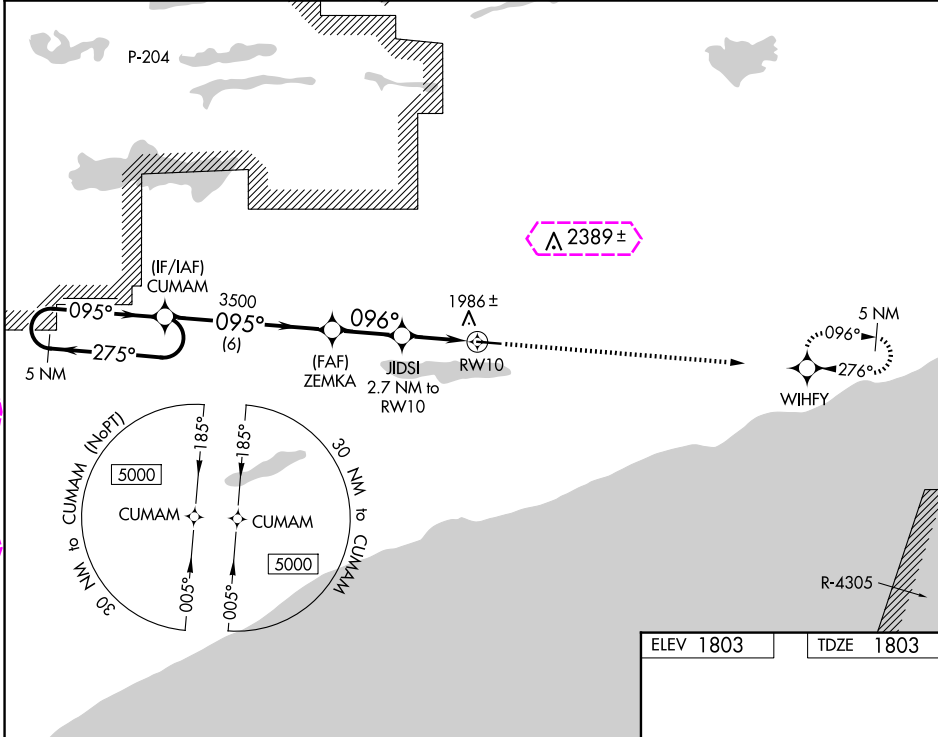
GRAND MARAIS/COOK COUNTY (CKC)

RNP APCH.

▽ Rwy 10 helicopter visibility reduction below 1 SM NA.
▲ Procedure NA at night.

MISSED APPROACH: Climb to 7000 direct WIHFY and hold, continue climb-in-hold to 7000.

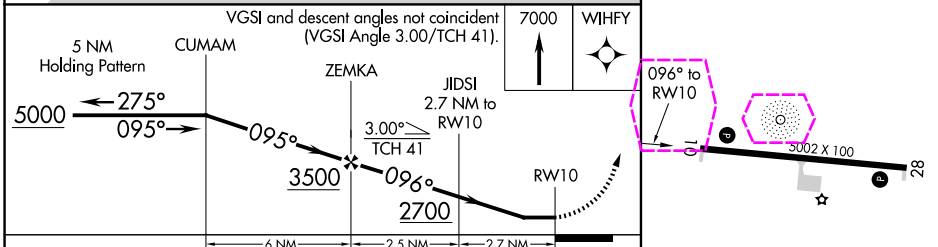
AWOS-3 119.925	MINNEAPOLIS CENTER 127.9 281.45	UNICOM 122.8 (CTAF)
--------------------------	---	-------------------------------



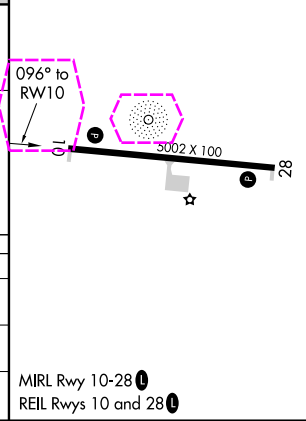
NC-1, 30 OCT 2025 to 27 NOV 2025

NC-1, 30 OCT 2025 to 27 NOV 2025

ELEV 1803	TDZE 1803
-----------	-----------



CATEGORY	A	B	C	D
LP MDA	2200-1	397 (400-1)	2200-1 $\frac{1}{8}$	397 (400-1 $\frac{1}{8}$)
LNVA MDA	2240-1	437 (500-1)	2240-1 $\frac{1}{4}$	437 (500-1 $\frac{1}{4}$)
CIRCLING	2300-1	497 (500-1)	2380-1 $\frac{1}{2}$ 577 (600-1 $\frac{1}{2}$)	2640-2 $\frac{3}{4}$ 837 (900-2 $\frac{3}{4}$)



GRAND MARAIS, MINNESOTA
Amdt 1A 25APR19

47°50'N-90°23'W

GRAND MARAIS/COOK COUNTY (CKC)
RNAV (GPS) RWY 10

MIRL Rwy 10-28
REIL Rwy 10 and 28

GRAND MARAIS, MINNESOTA

AL-5643 (FAA)

25331

WAAS CH 45920 W10A	APP CRS 096°	Rwy Ldg TDZE Apt Elev	5002 1803 1803
--	------------------------	-----------------------------	---

RNAV (GPS) RWY 10

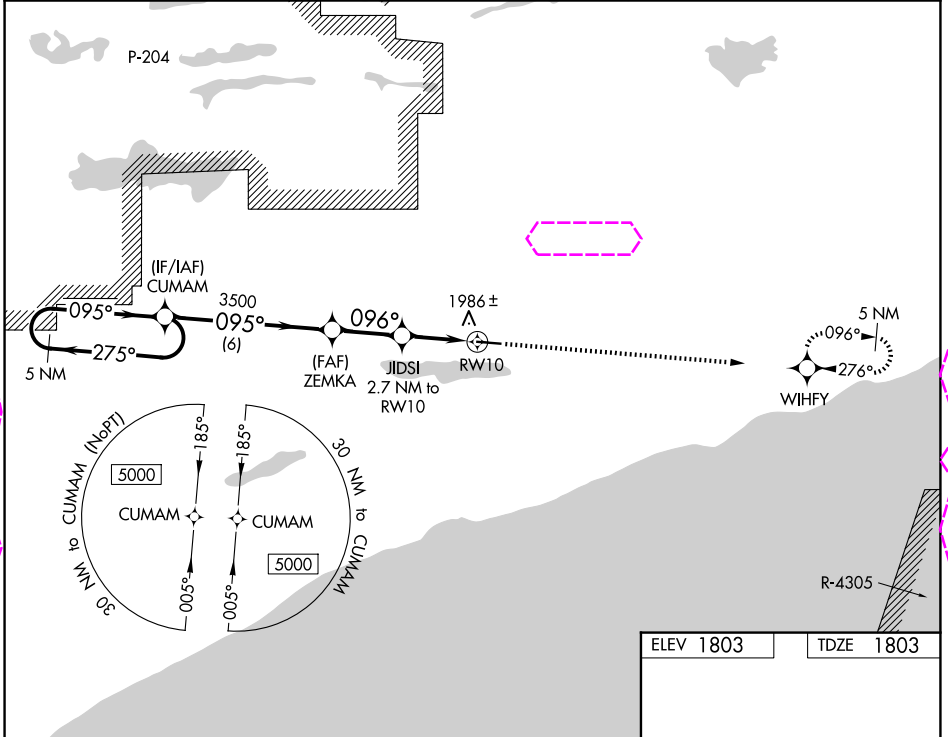
GRAND MARAIS/COOK COUNTY (CKC)

RNP APCH.

▼ Rwy 10 helicopter visibility reduction below 1 SM NA.
▲ Procedure NA at night.

MISSED APPROACH: Climb to 7000 direct
WIFYF and hold, continue climb-in-hold to 7000.

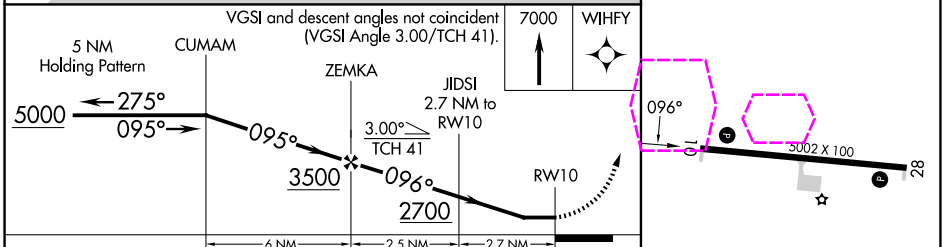
AWOS-3 119.925	MINNEAPOLIS CENTER 127.9 281.45	UNICOM 122.8 (CTAF) 0
--------------------------	---	---------------------------------



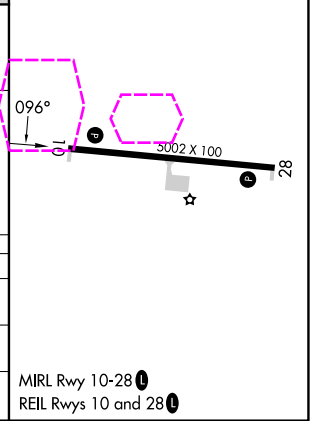
NC-1, 27 NOV 2025 to 25 DEC 2025

NC-1, 27 NOV 2025 to 25 DEC 2025

ELEV 1803	TDZE 1803
-----------	-----------



CATEGORY	A	B	C	D
LP MDA	2200-1	397 (400-1)	2200-1½	397 (400-1½)
LNVA MDA	2240-1	437 (500-1)	2240-1¼	437 (500-1¼)
CIRCLING	2300-1	497 (500-1)	2380-1½ 577 (600-1½)	2640-2¾ 837 (900-2¾)



GRAND MARAIS, MINNESOTA
Amdt 1A 25APR19

47°50'N-90°23'W

GRAND MARAIS/COOK COUNTY (CKC)
RNAV (GPS) RWY 10

MIRL Rwy 10-28 0
REIL Rwys 10 and 28 0