

MARSHALL, MINNESOTA

AL-5640 (FAA)

21196

VOR/DME MML <b>111.0</b> Chan <b>47</b>	APP CRS <b>130°</b>	Rwy Idg TDZE Apt Elev <b>7221</b> <b>1183</b> <b>1183</b>
---	------------------------	--

SOUTHWEST MINNESOTA RGNL MARSHALL/RYAN FLD (MML)

# VOR RWY 12

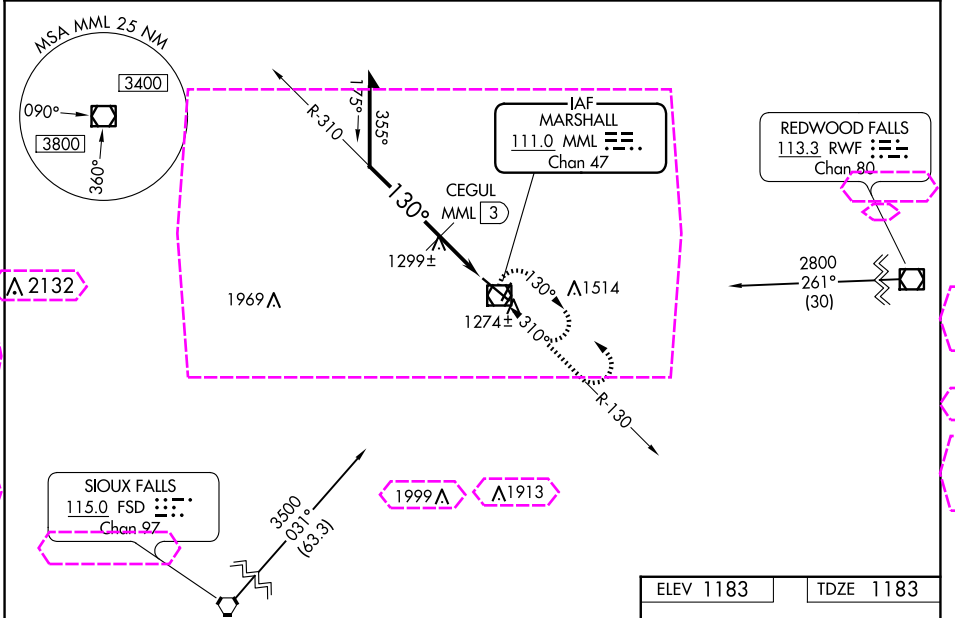
**NA** For inop ALS, increase S-12 Cat C/D visibilities to 1½ SM, CEGUL fix minimums: S-12 Cat C/D visibility to 1 SM. For inop ALS when using Tracy altimeter setting increase S-12 Cat C/D visibilities to 1¼ SM. When local altimeter setting not received, use Tracy Muni altimeter setting and increase all MDAs 60 feet, S-12 Cat C/D visibility ½; Circling Cat C/D visibility ¼ SM; CEGUL fix minimums: increase Circling C/D visibility ¼ SM. VDP NA when using Tracy Muni altimeter setting.

MALS



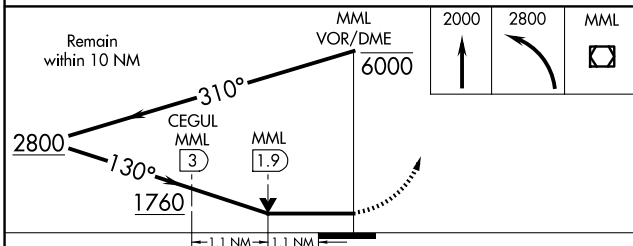
MISSED APPROACH: Climb to 2000, then climbing left turn to 2800 direct MML VOR/DME and hold.

AWOS-3PT <b>120.150</b>	MINNEAPOLIS CENTER <b>127.1 290.2</b>	GCO <b>121.725</b>	UNICOM <b>122.8</b> (CTAF)
----------------------------	--	-----------------------	-------------------------------



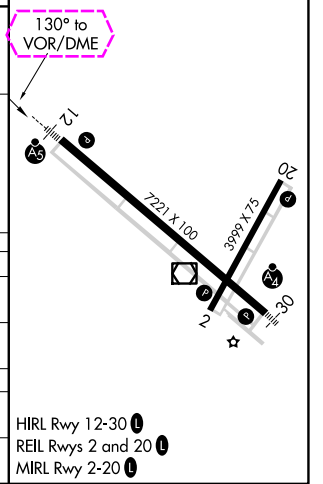
NC-1, 30 OCT 2025 to 27 NOV 2025

NC-1, 30 OCT 2025 to 27 NOV 2025



ELEV 1183	TDZE 1183
-----------	-----------

CATEGORY	A	B	C	D
S-12	1760-½ 577 (600-½)		1760-1¼ 577 (600-1¼)	
CIRCLING	1760-1 577 (600-1)		1820-1¾ 637 (700-1¾)	1840-2 657 (700-2)
CEGUL FIX MINIMUMS				
S-12	1560-½ 377 (400-½)		1560-¾ 377 (400-¾)	
CIRCLING	1640-1 457 (500-1)		1820-1¾ 637 (700-1¾)	1840-2 657 (700-2)



HIRL Rwy 12-30  
REIL Rws 2 and 20  
MIRL Rwy 2-20

MARSHALL, MINNESOTA  
Amdt 8C 15JUL21

SOUTHWEST MINNESOTA RGNL MARSHALL/RYAN FLD (MML)  
44°27'N-95°49'W

# VOR RWY 12

VOR/DME MML <b>111.0</b> Chan <b>47</b>	APP CRS <b>130°</b>	Rwy Ldg <b>7221</b> TDZE <b>1183</b> Apt Elev <b>1183</b>
---	------------------------	--

SOUTHWEST MINNESOTA RGNL MARSHALL/RYAN FLD (MML) **VOR RWY 12**

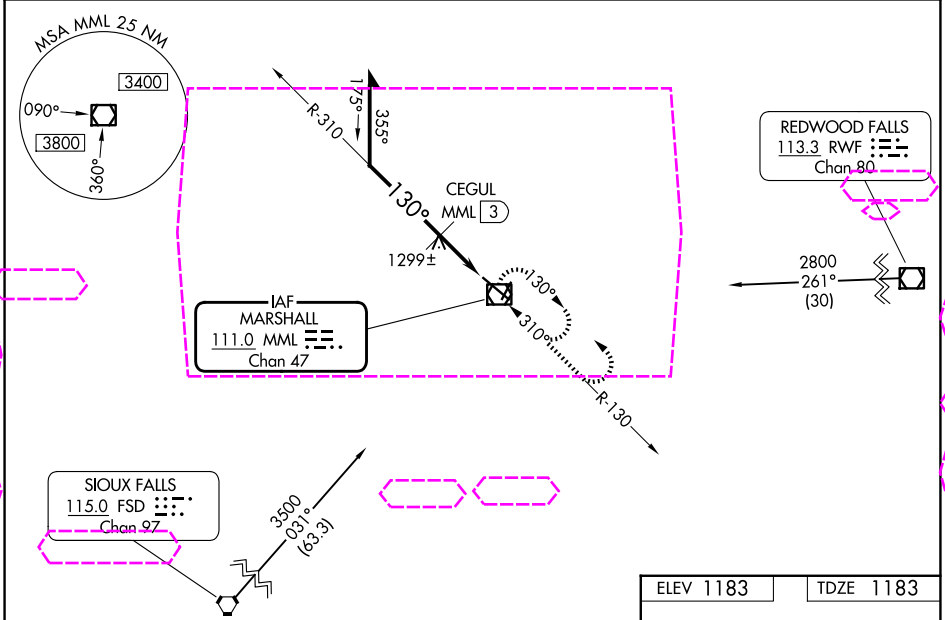
**NA** For inop ALS, increase S-12 Cat C/D visibilities to 1½ SM, CEGUL fix minimums: S-12 Cat C/D visibility to 1 SM. For inop ALS when using Tracy altimeter setting increase S-12 Cat C/D visibilities to 1¾ SM. When local altimeter setting not received, use Tracy Muni altimeter setting and increase all MDAs 60 feet, S-12 Cat C/D visibility ½; Circling Cat C/D visibility ¼ SM; CEGUL fix minimums: increase Circling C/D visibility ¼ SM. VDP NA when using Tracy Muni altimeter setting.

MALSR



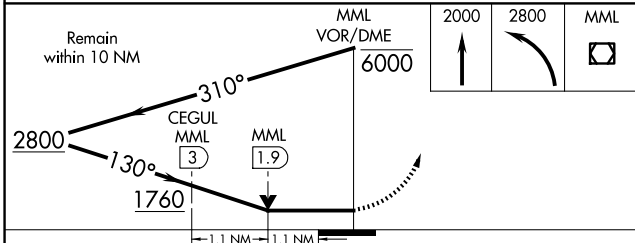
MISSED APPROACH: Climb to 2000, then climbing left turn to 2800 direct MML VOR/DME and hold.

AWOS-3PT <b>120.150</b>	MINNEAPOLIS CENTER <b>127.1 290.2</b>	GCO <b>121.725</b>	UNICOM <b>122.8 (CTAF)</b>
----------------------------	--	-----------------------	-------------------------------



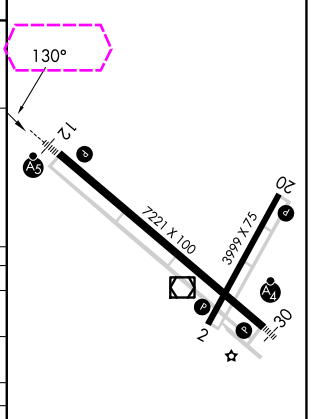
NC-1, 27 NOV 2025 to 25 DEC 2025

NC-1, 27 NOV 2025 to 25 DEC 2025



CATEGORY	A	B	C	D
S-12	1760-½ 577 (600-½)		1760-¼ 577 (600-¼)	
CIRCLING	1760-1 577 (600-1)		1820-¾ 637 (700-¾)	1840-2 657 (700-2)
CEGUL FIX MINIMUMS				
S-12	1560-½ 377 (400-½)		1560-¾ 377 (400-¾)	
CIRCLING	1640-1 457 (500-1)		1820-¾ 637 (700-¾)	1840-2 657 (700-2)

ELEV 1183	TDZE 1183
-----------	-----------



HIRL Rwy 12-30  
REIL Rws 2 and 20  
MIRL Rwy 2-20