

MARSHALL, MINNESOTA

AI-5640 (FAA)

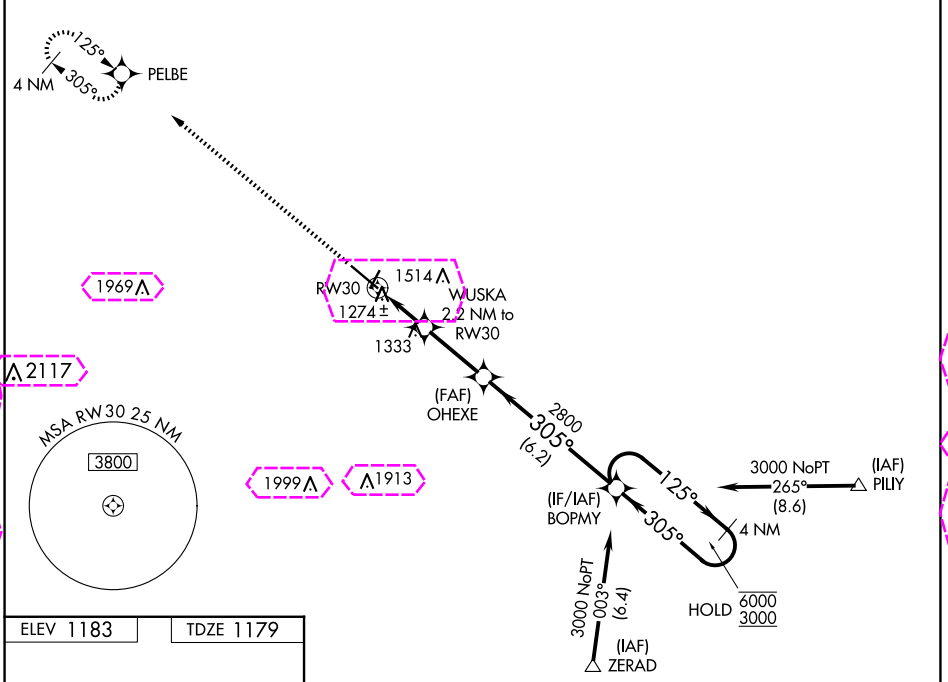
21280

WAAS CH 86321 W30A	APP CRS 305°	Rwy Idg 7221 TDZE 1179 Apt Elev 1183
--	------------------------	---

RNAV (GPS) RWY 30

SOUTHWEST MINNESOTA RGNL MARSHALL/RYAN FLD (MML)

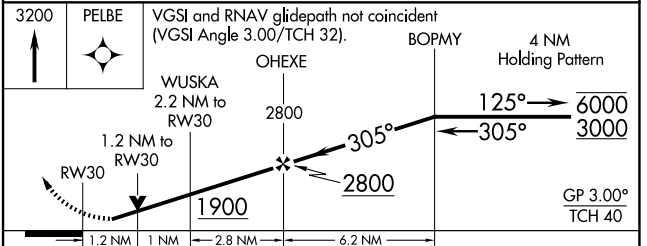
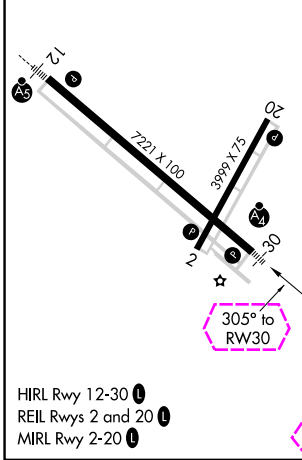
RNP APCH - GPS		MALSF	MISSED APPROACH: Climb to 3200 direct PELBE and hold.
AWOS-3PT 120.150	MINNEAPOLIS CENTER 127.1 290.2	GCO 121.725	UNICOM 122.8 (CTAF) 0



NC-1, 30 OCT 2025 to 27 NOV 2025

NC-1, 30 OCT 2025 to 27 NOV 2025

ELEV 1183	TDZE 1179
-----------	-----------



CATEGORY	A	B	C	D
LPV DA		1429- ³ / ₄	250 (300- ³ / ₄)	
LNAV/VNAV DA		1464- ³ / ₄	285 (300- ³ / ₄)	
LNAV MDA	1600- ³ / ₄	421 (500- ³ / ₄)	1600-1	421 (500-1)
CIRCLING	1640-1	457 (500-1)	1820-1 ³ / ₄ 637 (700-1 ³ / ₄)	1840-2 657 (700-2)

MARSHALL, MINNESOTA
Orig-C 07OCT21

SOUTHWEST MINNESOTA RGNL MARSHALL/RYAN FLD (MML)
44°27'N-95°49'W

RNAV (GPS) RWY 30

MARSHALL, MINNESOTA

AL-5640 (FAA)

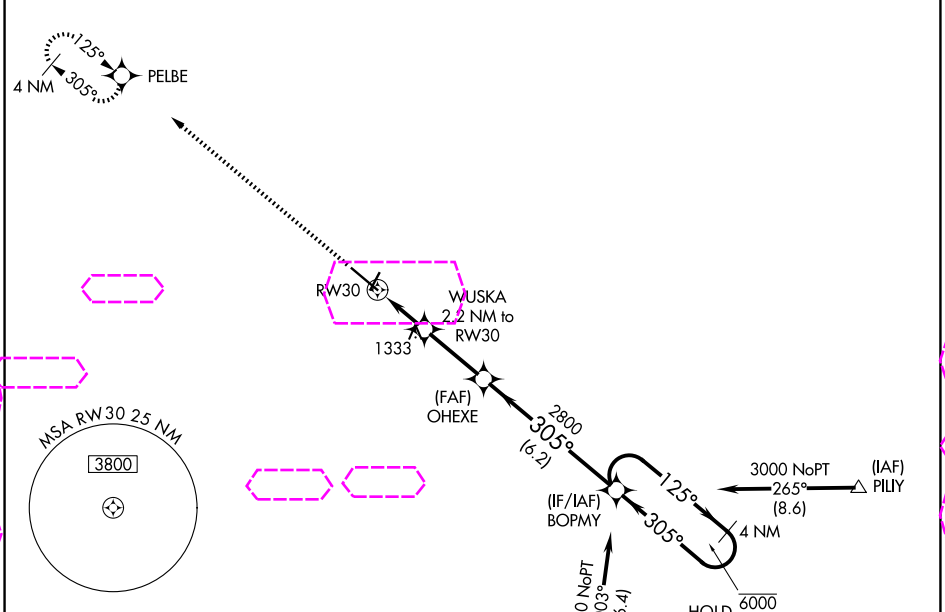
25331

WAAS CH 86321 W30A	APP CRS 305°	Rwy Ldg 7221 TDZE 1179 Apt Elev 1183
--	------------------------	---

RNAV (GPS) RWY 30

SOUTHWEST MINNESOTA RGNL MARSHALL/RYAN FLD (MML)

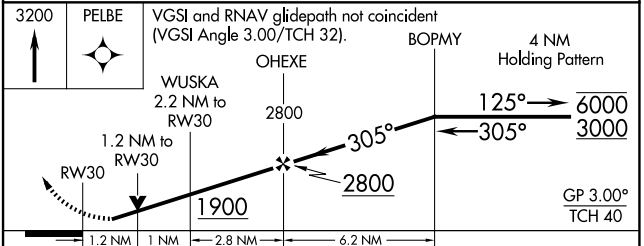
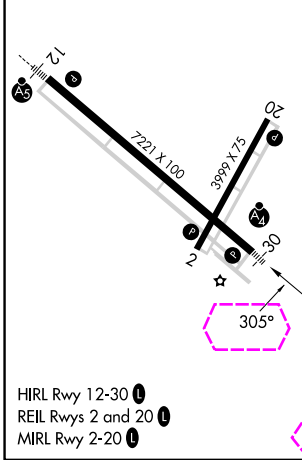
RNP APCH - GPS		MALSF	MISSED APPROACH: Climb to 3200 direct PELBE and hold.
AWOS-3PT 120.150	MINNEAPOLIS CENTER 127.1 290.2	GCO 121.725	UNICOM 122.8 (CTAF) 0



NC-1, 27 NOV 2025 to 25 DEC 2025

NC-1, 27 NOV 2025 to 25 DEC 2025

ELEV 1183	TDZE 1179
-----------	-----------



CATEGORY	A	B	C	D
LPV DA		1429- ³ / ₄	250 (300- ³ / ₄)	
LNAV/VNAV DA		1464- ³ / ₄	285 (300- ³ / ₄)	
LNAV MDA	1600- ³ / ₄	421 (500- ³ / ₄)	1600-1	421 (500-1)
CIRCLING	1640-1	457 (500-1)	1820-1 ³ / ₄ 637 (700-1 ³ / ₄)	1840-2 657 (700-2)

MARSHALL, MINNESOTA
Orig-C 07OCT21

SOUTHWEST MINNESOTA RGNL MARSHALL/RYAN FLD (MML)
44°27'N-95°49'W

RNAV (GPS) RWY 30