

MARSHALL, MINNESOTA

AL-5640 (FAA)

21196

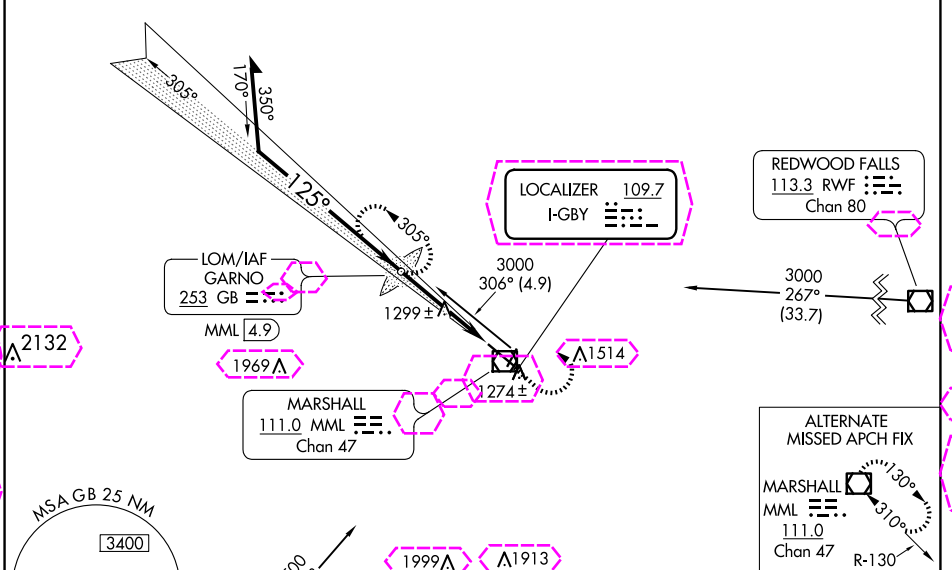
LOC I-GBY	APP CRS	Rwy Idg	7221
109.7	125°	TDZE	1183
		Apt Elev	1183

# ILS or LOC RWY 12

SOUTHWEST MINNESOTA RGNL MARSHALL/RYAN FLD (MML)

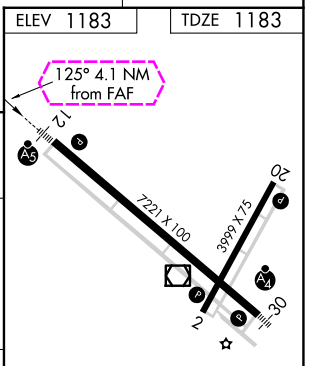
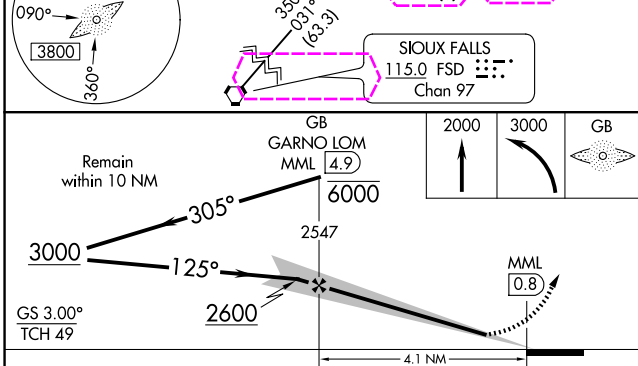
ADF or DME required.	MALSR	MISSED APPROACH: Climb to 2000 then climbing left turn to 3000 direct GARNO LOM/ MML 4.9 DME and hold.
<p>⚠ NA When local altimeter setting not received, use Tracy Muni altimeter setting and increase ILS DA to 1441 feet and all MDA 60 feet, S-LOC Cat C/D visibility 1/8 SM and Circling visibility Cat C/D 1/4 SM. Inop table does not apply. For inop ALS increase S-LOC 12 all Cats visibility to 1 SM. Inop table does not apply when using Tracy Muni altimeter setting. For inop ALS when using Tracy Muni altimeter setting, increase S-LOC 12 Cat A/B visibility to 1 SM.</p>		

AWOS-3PT <b>120.150</b>	MINNEAPOLIS CENTER <b>127.1 290.2</b>	GCO <b>121.725</b>	UNICOM <b>122.8 (CTAF)</b>
----------------------------	--	-----------------------	-------------------------------



NC-1, 30 OCT 2025 to 27 NOV 2025

NC-1, 30 OCT 2025 to 27 NOV 2025



CATEGORY	A	B	C	D
S-ILS 12	1383-1/2 200 (200-1/2)			
S-LOC 12	1560-1/2 377 (400-1/2)	1560-5/8 377 (400-5/8)		
CIRCLING	1640-1 457 (500-1)	1820-1 3/4 637 (700-1 3/4)	1840-2 657 (700-2)	

HIRL Rwy 12-30	REIL Rwy 2 and 20	MIRL Rwy 2-20			
FAF to MAP 4.1 NM					
Knots	60	90	120	150	180
Min:Sec	4:06	2:44	2:03	1:38	1:22

MARSHALL, MINNESOTA  
Amdt 2B 15JUL21

SOUTHWEST MINNESOTA RGNL MARSHALL/RYAN FLD (MML)  
44°27'N-95°49'W

# ILS or LOC RWY 12

MARSHALL, MINNESOTA

AL-5640 (FAA)

25331

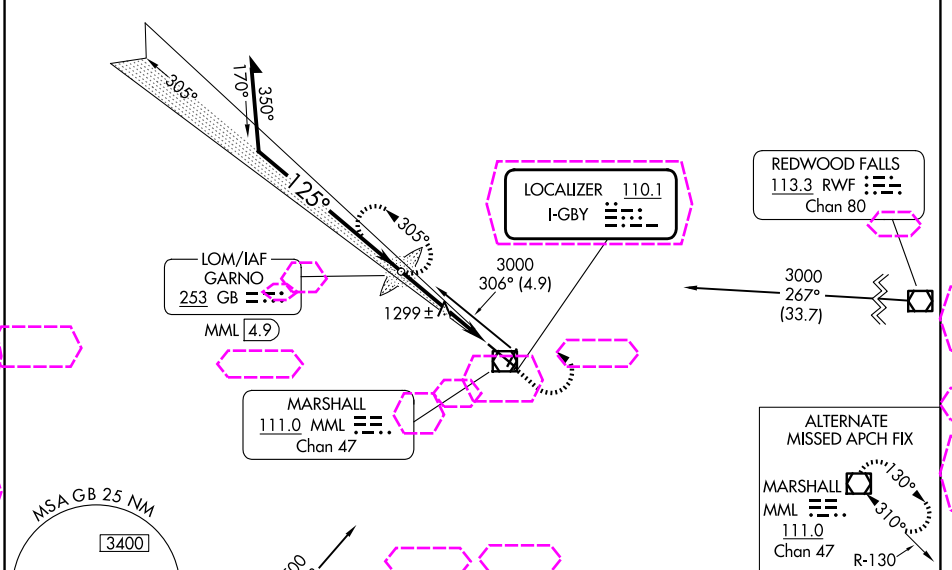
LOC I-GBY	APP CRS	Rwy Ldg	7221
110.1	125°	TDZE	1183
		Apt Elev	1183

# ILS or LOC RWY 12

SOUTHWEST MINNESOTA RGNL MARSHALL/RYAN FLD (MML)

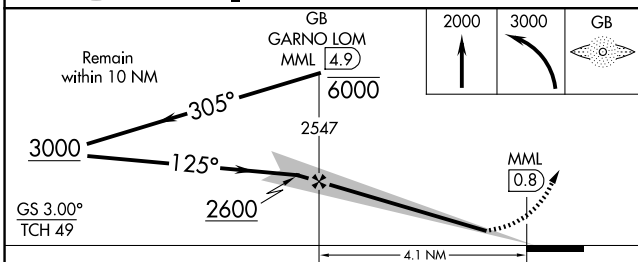
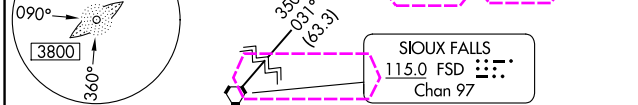
ADF or DME required.	MALSR	MISSED APPROACH: Climb to 2000 then climbing left turn to 3000 direct GARNO LOM/ MML 4.9 DME and hold.
<p>⚠ NA When local altimeter setting not received, use Tracy Muni altimeter setting and increase ILS DA to 1441 feet and all MDA 60 feet, S-LOC Cat C/D visibility 1/8 SM and Circling visibility Cat C/D 1/4 SM. Inop table does not apply. For inop ALS increase S-LOC 12 all Cats visibility to 1 SM. Inop table does not apply when using Tracy Muni altimeter setting. For inop ALS when using Tracy Muni altimeter setting, increase S-LOC 12 Cat A/B visibility to 1 SM.</p>		

AWOS-3PT <b>120.150</b>	MINNEAPOLIS CENTER <b>127.1 290.2</b>	GCO <b>121.725</b>	UNICOM <b>122.8 (CTAF) 0</b>
----------------------------	--	-----------------------	---------------------------------

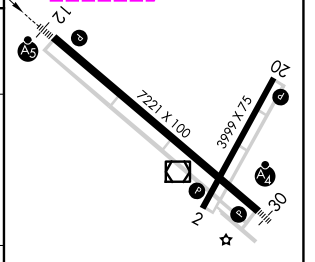


NC-1, 27 NOV 2025 to 25 DEC 2025

NC-1, 27 NOV 2025 to 25 DEC 2025



ELEV 1183	TDZE 1183
-----------	-----------



CATEGORY	A	B	C	D
S-ILS 12		1383-1/2	200 (200-1/2)	
S-LOC 12	1560-1/2	377 (400-1/2)	1560-5/8	377 (400-5/8)
CIRCLING	1640-1	457 (500-1)	1820-1 3/4 637 (700-1 3/4)	1840-2 657 (700-2)

HIRL Rwy 12-30	1
REIL Rws 2 and 20	1
MIRL Rwy 2-20	1
FAF to MAP 4.1 NM	
Knots	60 90 120 150 180
Min:Sec	4:06 2:44 2:03 1:38 1:22

MARSHALL, MINNESOTA  
Amdt 2B 15JUL21

SOUTHWEST MINNESOTA RGNL MARSHALL/RYAN FLD (MML)  
44°27'N-95°49'W

# ILS or LOC RWY 12