

(CAVVS4.CAVVS) 20086

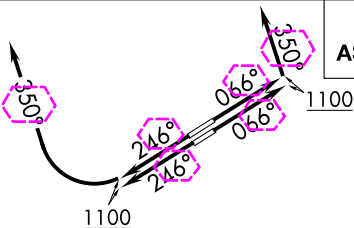
AL-5370 (FAA)

BURKE LAKEFRONT (BKL)  
CLEVELAND, OHIO

# CAVVS FOUR DEPARTURE (RNAV)

ATIS 125.25  
 CLNC DEL  
 339.8  
 121.9 (when tower closed)  
 GND CON 121.9 339.8  
 LAKEFRONT TOWER \*  
 124.3 (CTAF) 339.8  
 CLEVELAND DEP CON  
 125.35 346.325

**TOP ALTITUDE:  
ASSIGNED BY ATC**



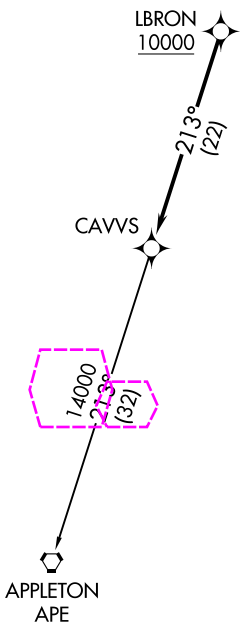
NOTE: RADAR required.  
 NOTE: RNAV 1.  
 NOTE: DME/DME/IRU or  
 GPS required.

### TAKEOFF MINIMUMS:

Rwy 6L/R, 24R: Standard with a minimum climb  
 of 500' per NM to 1100.  
 Rwy 24L: 400-1 $\frac{3}{4}$  or standard with minimum  
 climb of 757' per NM to 1000.

EC-2, 30 OCT 2025 to 27 NOV 2025

EC-2, 30 OCT 2025 to 27 NOV 2025



### DEPARTURE ROUTE DESCRIPTION

**TAKEOFF RUNWAYS 6L/R:** Climb on heading 066° to 1100,  
 then on heading 350° or as assigned by ATC, maintain 2000  
 (do not climb above 2000) for RADAR vectors to cross LBRON  
 at or above 10000, thence....

**TAKEOFF RUNWAYS 24L/R:** Climb on heading 246° to 1100,  
 then right turn heading 350° or as assigned by ATC, maintain  
 2000 (do not climb above 2000) for RADAR vectors to cross  
 LBRON at or above 10000, thence....

on track 213° to CAVVS, then on (transition)

Maintain altitude assigned by ATC, expect  
 filed altitude ten minutes after departure.

APPLETON TRANSITION (CAVVS4.APE)

NOTE: Chart not to scale.

# CAVVS FOUR DEPARTURE (RNAV)

(CAVVS4.CAVVS) 26MAR20

CLEVELAND, OHIO  
BURKE LAKEFRONT (BKL)

(CAVVS5.CAVVS) 25331

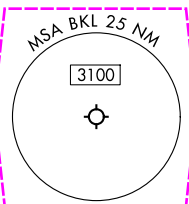
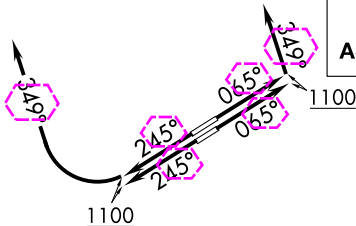
AL-5370 (FAA)

BURKE LAKEFRONT (BKL)  
CLEVELAND, OHIO

# CAVVS FIVE DEPARTURE (RNAV)

CLEVELAND DEP CON  
125.35 346.325  
ATIS 125.25  
CLNC DEL  
339.8  
121.9 (when twr closed)  
GND CON 121.9 339.8  
LAKEFRONT TOWER ★  
124.3 (CTAF) 339.8

**TOP ALTITUDE:  
ASSIGNED BY ATC**



RNAV 1 - DME/DME/IRU or GPS.  
RADAR required.

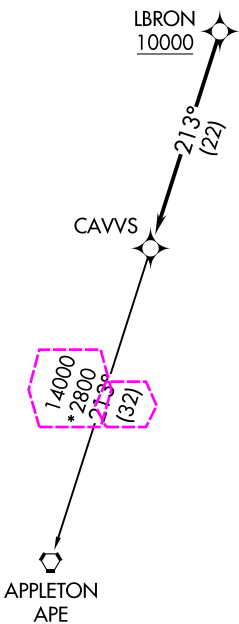
### TAKEOFF MINIMUMS:

- Rwy 6L, 24R: Standard with minimum climb of 500' per NM to 1100.
- Rwy 6R: Standard with minimum climb of 500' per NM to 1100. NA when control tower closed.
- Rwy 24L: 400-1 $\frac{3}{4}$  or standard with minimum climb of 757' per NM to 1000. NA when control tower closed.

NOTE: Rwy 6R/24L: Takeoff minimums NA when control tower closed.

EC-2, 27 NOV 2025 to 25 DEC 2025

EC-2, 27 NOV 2025 to 25 DEC 2025



### DEPARTURE ROUTE DESCRIPTION

**TAKEOFF RUNWAYS 6L/R:** Climb on heading 065° to 1100, then on heading 349° or as assigned by ATC, maintain 2000 (do not climb above 2000) for RADAR vectors to cross LBRON at or above 10000, thence....

**TAKEOFF RUNWAYS 24L/R:** Climb on heading 245° to 1100, then right turn heading 349° or as assigned by ATC, maintain 2000 (do not climb above 2000) for RADAR vectors to cross LBRON at or above 10000, thence....

on track 213° to CAVVS, then on (transition)  
Maintain ATC assigned altitude, expect filed altitude ten minutes after departure.

APPLETON TRANSITION (CAVVS5.APE)

NOTE: Chart not to scale.

# CAVVS FIVE DEPARTURE (RNAV)

(CAVVS5.CAVVS) 27NOV25

CLEVELAND, OHIO  
BURKE LAKEFRONT (BKL)