

MARION, OHIO

AL-5352 (FAA)

25275

WAAS CH 62904 W25A	APP CRS 245°	Rwy Idg 5000 TDZE 993 Apt Elev 993
--	------------------------	---

RNAV (GPS) RWY 25

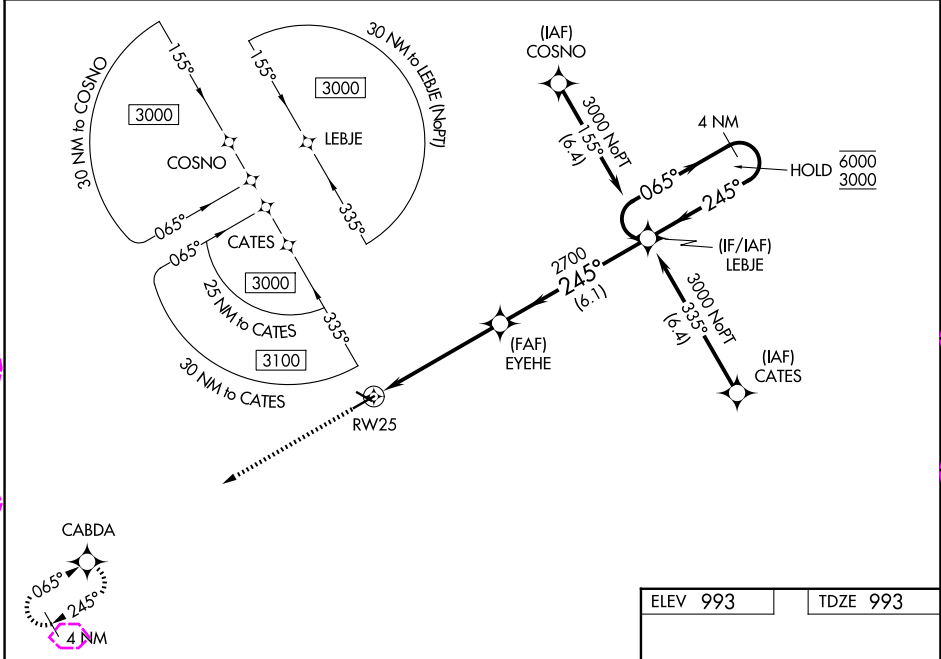
MARION MUNI (MNN)

RNP APCH - GPS.

⚠ Baro-VNAV and VDP NA when using OSU altimeter setting. Rwy 25 helicopter visibility reduction below $\frac{3}{4}$ SM NA. For uncompensated Baro-VNAV systems, LNAV/VNAV NA below -1.6°C or above 54°C . When local altimeter setting not received, use OSU altimeter setting and increase LPV DA to 1381 feet and all visibilities $\frac{1}{4}$ SM, increase LNAV/VNAV DA to 1468 feet and all visibilities $\frac{1}{4}$ SM; increase all MDAs 100 feet and LNAV visibility Cat C and D $\frac{3}{8}$ SM, and Circling visibility Cats C and D $\frac{1}{4}$ SM.

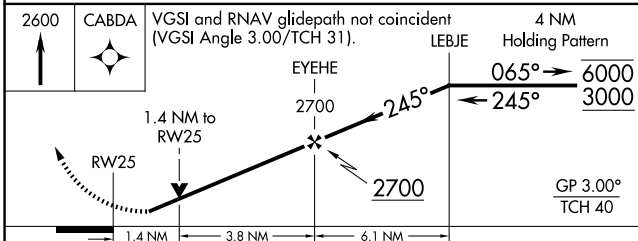
MISSED APPROACH:
Climb to 2600 direct CABDA and hold.

ASOS 119.975	CLEVELAND APP CON * 128.35 360.65	CLNC DEL 126.8	UNICOM 122.8 (CTAF)
------------------------	---	--------------------------	-------------------------------

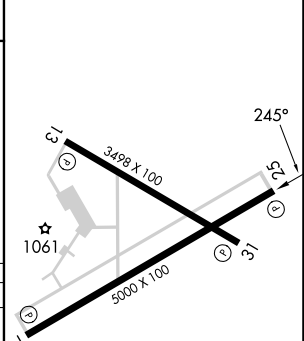


EC-2, 30 OCT 2025 to 27 NOV 2025

EC-2, 30 OCT 2025 to 27 NOV 2025



ELEV 993	TDZE 993
----------	----------



CATEGORY	A	B	C	D
LPV DA	1294- $\frac{7}{8}$		301 (400- $\frac{7}{8}$)	
LNAV/VNAV DA	1381-1 $\frac{1}{8}$		388 (400-1 $\frac{1}{8}$)	
LNAV MDA	1480-1 487 (500-1)		1480-1 $\frac{3}{8}$ 487 (500-1 $\frac{3}{8}$)	
CIRCLING	1480-1 487 (500-1)		1700-2 707 (800-2) 1820-2 $\frac{3}{4}$ 827 (900-2 $\frac{3}{4}$)	

REIL Rwy 7, 13, 25 and 31 **①**
MIRL Rwy 7-25 and 13-31 **①**

MARION, OHIO
Amdt 1 02OCT25

40°37'N-83°04'W

MARION MUNI (MNN) RNAV (GPS) RWY 25

MARION, OHIO

AL-5352 (FAA)

25331

WAAS CH 62904 W25A	APP CRS 245°	Rwy Ldg 5000 TDZE 993 Apt Elev 993
--	------------------------	---

RNAV (GPS) RWY 25

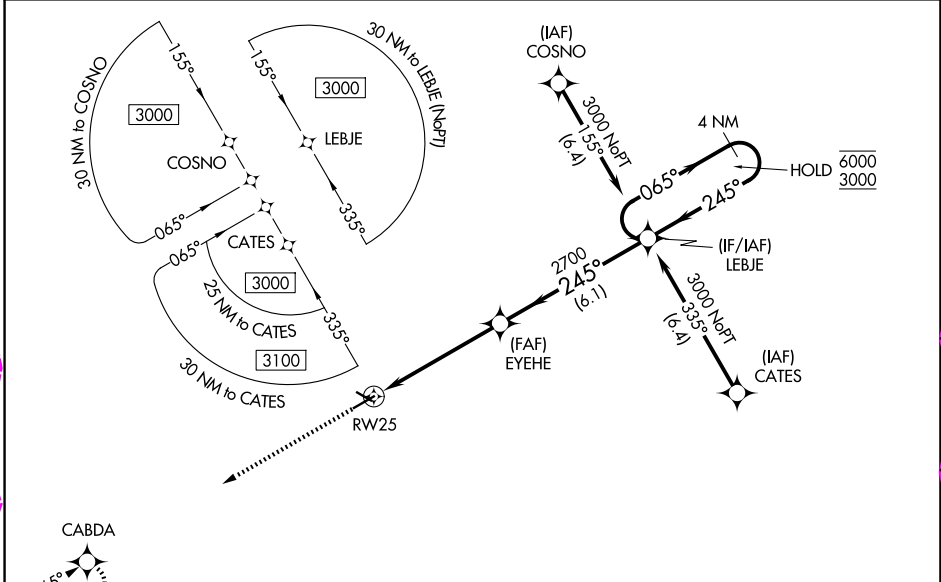
MARION MUNI (MNN)

RNP APCH - GPS.

Baro-VNAV and VDP NA when using OSU altimeter setting. Rwy 25 helicopter visibility reduction below 3/4 SM NA. For uncompensated Baro-VNAV systems, LNAV/VNAV NA below -1.6°C or above 54°C. When local altimeter setting not received, use OSU altimeter setting and increase LPV DA to 1381 feet and all visibilities 1/4 SM, increase LNAV/VNAV DA to 1468 feet and all visibilities 1/4 SM; increase all MDAs 100 feet and LNAV visibility Cat C and D 3/8 SM, and Circling visibility Cats C and D 1/4 SM.

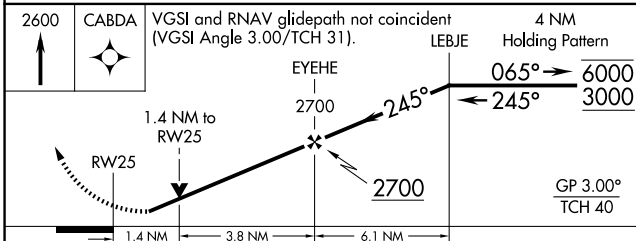
MISSED APPROACH:
Climb to 2600 direct CABDA and hold.

ASOS 119.975	CLEVELAND APP CON * 128.35 360.65	CLNC DEL 126.8	UNICOM 122.8 (CTAF)
------------------------	---	--------------------------	-------------------------------

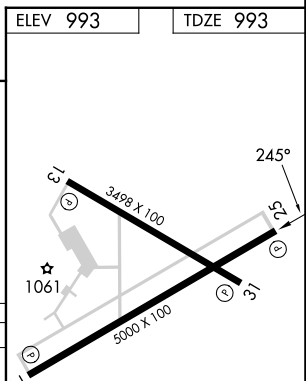


EC-2, 127 NOV 2025 to 25 DEC 2025

EC-2, 27 NOV 2025 to 25 DEC 2025



CATEGORY	A	B	C	D
LPV DA	1294-7/8		301 (400-7/8)	
LNAV/VNAV DA	1381-11/8		388 (400-11/8)	
LNAV MDA	1480-1 487 (500-1)		1480-13/8 487 (500-13/8)	
CIRCLING	1480-1 487 (500-1)		1700-2 827 (900-23/4) 1820-23/4 827 (900-23/4)	



ELEV 993 TDZE 993

REIL Rwy 7, 13, 25 and 31
MIRL Rwy 7-25 and 13-31

MARION, OHIO
Amdt 1 02OCT25

40°37'N-83°04'W

RNAV (GPS) RWY 25

MARION MUNI (MNN)