

(LINDY8, STL) 24025

LINDBERGH EIGHT DEPARTURE

AL-5316 (FAA)

ST LOUIS DOWNTOWN (CPS)
CAHOKIA/ST. LOUIS, ILLINOIS

ATIS
121.45
CLNC DEL
118.275
CLNC DEL
121.8 (when twr closed)
GND CON
121.8
DOWNTOWN TOWER*
119.925 379.3
ST LOUIS DEP CON
123.7 371.875

TOP ALTITUDE:
2500

ST. LOUIS
117.4 STL
Chan 121

VICHY
117.7 VIH
Chan 124

FARMINGTON
115.7 FAM
Chan 104

LITTLE ROCK
113.9 LIT
Chan 86

WALNUT RIDGE
114.5 ARG
Chan 92

TAKEOFF MINIMUMS

- Rwys 12L/R, 23, 30R: Standard.
- Rwy 5: 200-1½ or standard with minimum climb of 343' per NM to 700.
- Rwy 30L: 400-2½ or standard with minimum climb of 220' per NM to 900, or alternatively, with standard takeoff minimums and a normal 200' per NM climb gradient, takeoff must occur no later than 2100' prior to DER.

NOTE: DME and RADAR required.

(CONTINUED ON FOLLOWING PAGE)

NOTE: Chart not to scale.

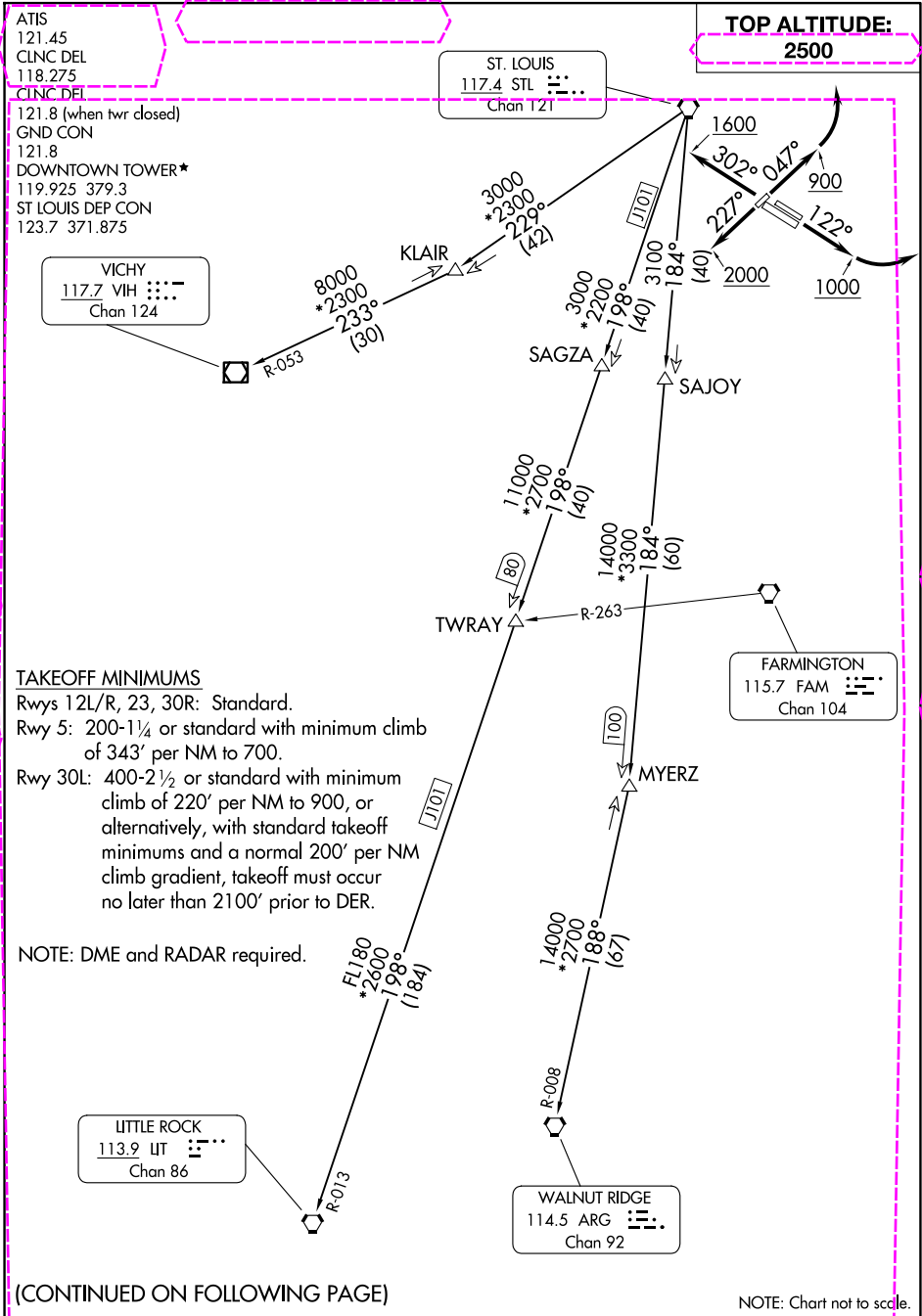
LINDBERGH EIGHT DEPARTURE

(LINDY8, STL) 17JUN21

CAHOKIA/ST. LOUIS, ILLINOIS
ST LOUIS DOWNTOWN (CPS)

EC-3: 30 OCT 2025 to 27 NOV 2025

EC-3: 30 OCT 2025 to 27 NOV 2025



(LINDY 9 STL) 25331

LINDBERGH NINE DEPARTURE

AL-5316 (FAA)

ST LOUIS DOWNTOWN (CPS)
CAHOKIA/ST. LOUIS, ILLINOIS

ST LOUIS DEP CON
123.7 371.875
ATIS
121.45
CLNC DEL
118.275
CLNC DEL
121.8 (when twr closed)
GND CON
121.8
DOWNTOWN TOWER*
119.925 379.3

DME and RADAR required.

**TOP ALTITUDE:
ASSIGNED BY ATC**

ST. LOUIS
117.4 STL :...
Chan 121

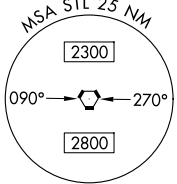
VICHY
117.7 VIH :...
Chan 124

TAKEOFF MINIMUMS
Rwys 5, 12L/R, 23, 30R: Standard.
Rwy 30L: 400-2½ or standard with minimum
climb of 225'/NM to 900.

FARMINGTON
115.7 FAM :...
Chan 104

WALNUT RIDGE
114.5 ARG :...
Chan 92

LITTLE ROCK
115.1 LIT :...
Chan 98



(CONTINUED ON FOLLOWING PAGE)

NOTE: Chart not to scale.

LINDBERGH NINE DEPARTURE

(LINDY 9 STL) 27NOV25

CAHOKIA/ST. LOUIS, ILLINOIS
ST LOUIS DOWNTOWN (CPS)

EC-3 27 NOV 2025 to 25 DEC 2025

EC-3 27 NOV 2025 to 25 DEC 2025

