

KANKAKEE, ILLINOIS

AL-5278 (FAA)

25219

LOC I- <b>IKK</b> <b>108.7</b>	APP CRS <b>042°</b>	Rwy Ldg TDZE Apt Elev	<b>5981</b> <b>624</b> <b>630</b>
-----------------------------------	------------------------	-----------------------------	---

# ILS or LOC RWY 4

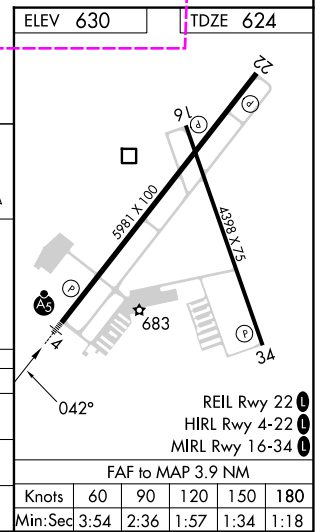
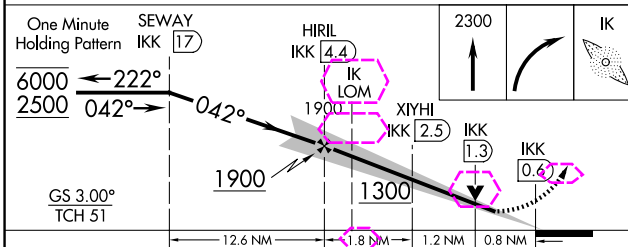
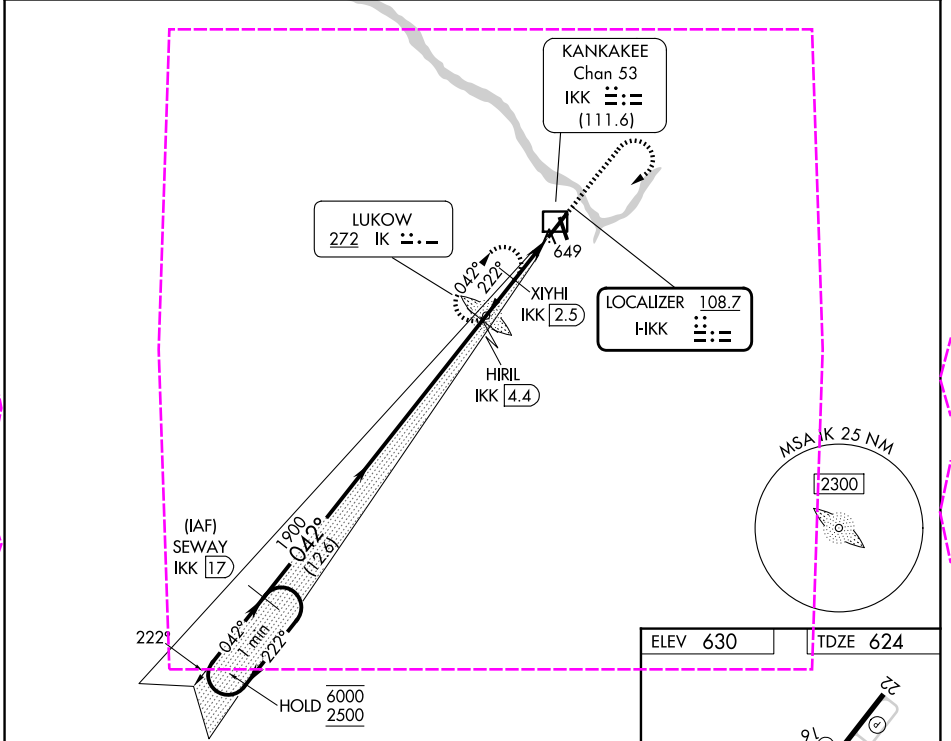
GREATER KANKAKEE (IKK)

**RADAR** required for procedure entry. DME required. ADF required.

**NA** Circling to Rwy 16, 34 NA at night. DME from IKK DME. DME use requires simultaneous reception of I-**IKK** and **IKK** DME. For inop ALS, increase S-LOC 4 Cat C/D visibility to  $\frac{3}{8}$  SM.

**MALS** MISSED APPROACH: Climb to 2300 then right turn direct LUKOW LOM and hold.

AWOS-3 <b>128.475</b>	CHICAGO CENTER <b>132.5 284.7</b>	UNICOM <b>123.0 (CTAF) 0</b>
--------------------------	--------------------------------------	---------------------------------



CATEGORY	A	B	C	D
<b>S-ILS 4</b>		824- $\frac{1}{2}$	200 (200- $\frac{1}{2}$ )	
S-LOC 4		920- $\frac{1}{2}$	296 (300- $\frac{1}{2}$ )	
<b>CIRCLING</b>	1080-1 450 (500-1)	1100-1 470 (500-1)	1140-1 $\frac{1}{2}$ 510 (600-1 $\frac{1}{2}$ )	1340-2 $\frac{1}{4}$ 710 (800-2 $\frac{1}{4}$ )

KANKAKEE, ILLINOIS  
Amdt 9 26DEC24

41°04'N-87°51'W

# GREATER KANKAKEE (IKK)

## ILS or LOC RWY 4

Knots	60	90	120	150	180
Min:Sec	3:54	2:36	1:57	1:34	1:18

EC-3 30 OCT 2025 to 27 NOV 2025

EC-3 30 OCT 2025 to 27 NOV 2025

KANKAKEE, ILLINOIS

AL-5278 (FAA)

25331

LOC I- <b>IKK</b> <b>108.7</b>	APP CRS <b>042°</b>	Rwy Ldg TDZE Apt Elev	<b>5981</b> <b>624</b> <b>630</b>
-----------------------------------	------------------------	-----------------------------	---

# ILS or LOC RWY 4

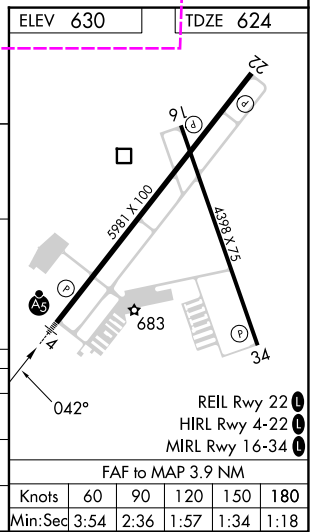
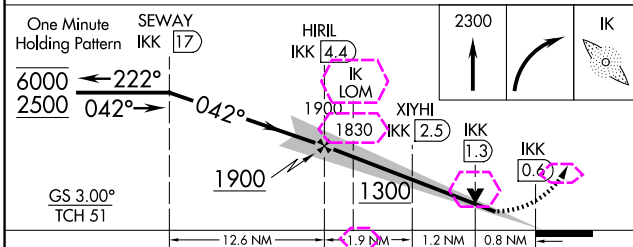
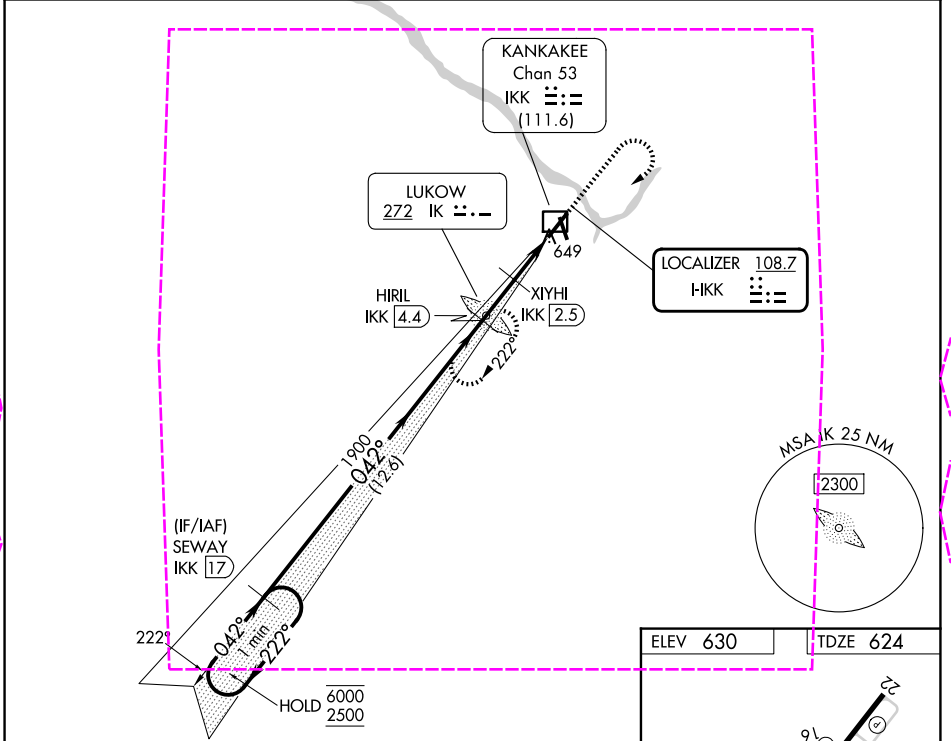
GREATER KANKAKEE (IKK)

**RADAR** required for procedure entry. DME required. ADF required.

**NA** Circling to Rwy 16, 34 NA at night. DME from IKK DME. DME use requires simultaneous reception of H-KK and IKK DME. For inop ALS, increase S-LOC 4 Cat C/D visibility to ½ SM. Autopilot coupled approach NA below 988 feet.

**MALSR** MISSED APPROACH: Climb to 2300 then right turn direct LUKOW LOM and hold.

AWOS-3 <b>128.475</b>	CHICAGO CENTER <b>132.5 284.7</b>	UNICOM <b>123.0 (CTAF) 0</b>
--------------------------	--------------------------------------	---------------------------------



One Minute Holding Pattern	SEWAY IKK 17	HIRIL IKK 4.4	2300	IK
6000 ← 222°	042° →	1900	↑	↷
2500		1830	↷	↻
GS 3.00° TCH 51		1300		
	12.6 NM	1.9 NM	1.2 NM	0.8 NM
CATEGORY	A	B	C	D
S-ILS 4		824-½	200 (200-½)	
S-LOC 4		920-½	296 (300-½)	
CIRCLING	1080-1 450 (500-1)	1100-1 470 (500-1)	1140-1½ 510 (600-1½)	1340-2¼ 710 (800-2¼)

KANKAKEE, ILLINOIS  
Amdt. 9A 27NOV25

41°04'N-87°51'W

## GREATER KANKAKEE (IKK)

### ILS or LOC RWY 4

FAF to MAP 3.9 NM	Knots	60	90	120	150	180
	Min:Sec	3:54	2:36	1:57	1:34	1:18

EC-3 127 NOV 2025 to 25 DEC 2025

EC-3 27 NOV 2025 to 25 DEC 2025