

MINNEAPOLIS, MINNESOTA

AL-5202 (FAA)

23334

| | | |
|--|------------------------|--|
| VORTAC GEP 117.3 Chan 120 | APP CRS 084° | Rwy Idg 5000 TDZE 910 Apt Elev 912 |
|--|------------------------|--|

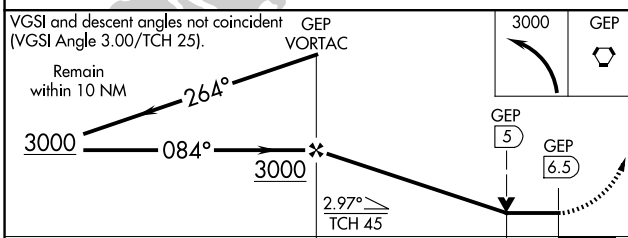
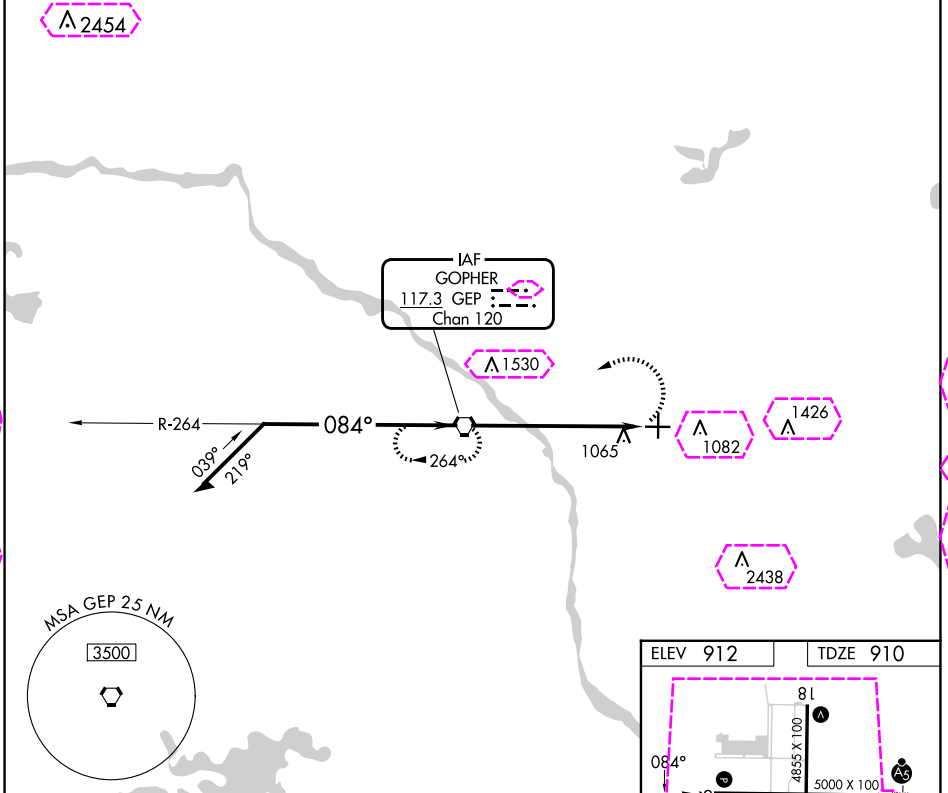
VOR RWY 9

ANOKA COUNTY/BLAINE (JANES FLD) (A.N.E.)

When local altimeter setting not received, use Crystal altimeter setting: increase all MDA 40 feet and increase S-9 visibility Cat C/D 1/8 SM and Circling Cat D 1/4 SM. VDP NA when using Crystal altimeter setting.

MISSED APPROACH: Climbing left turn to 3000 direct GEP VORTAC and hold.

| | | | | | | |
|------------------------|--|--|--------------------------|--------------------------|--|-------------------------|
| ATIS 120.625 | MINNEAPOLIS APP CON 126.5 335.65 | ANOKA TOWER* 132.4 (CTAF) 0 | GND CON 121.85 | CLNC DEL 121.3 | CLNC DEL 121.85 (When twr closed) | UNICOM 122.95 |
|------------------------|--|--|--------------------------|--------------------------|--|-------------------------|



| | |
|----------|----------|
| ELEV 912 | TDZE 910 |
|----------|----------|

HIRL Rwy 9-27
MIRL Rwy 18-36
REIL Rwys 9, 18 and 36

FAF to MAP 6.5 NM

| | | | | | |
|---------|------|------|------|------|------|
| Knots | 60 | 90 | 120 | 150 | 180 |
| Min:Sec | 6:30 | 4:20 | 3:15 | 2:36 | 2:10 |

| CATEGORY | A | B | C | D |
|-----------------|--------|-------------|-------------------------------|-----------------------|
| S-9 | 1400-1 | 490 (500-1) | 1400-1 3/8 | 490 (500-1 1/8) |
| CIRCLING | 1400-1 | 488 (500-1) | 1460-1 1/2 548 (600-1 1/2) | 1580-2 668 (700-2) |

MINNEAPOLIS, MINNESOTA
Amdt 12E 03NOV22

ANOKA COUNTY/BLAINE (JANES FLD) (A.N.E.)
45°09'N-93°13'W

VOR RWY 9

NC-1, 30 OCT 2025 to 27 NOV 2025

NC-1, 30 OCT 2025 to 27 NOV 2025

MINNEAPOLIS, MINNESOTA

AL-5202 (FAA)

25331

| | | |
|--|------------------------|---|
| VORTAC GEP 117.3 Chan 120 | APP CRS 084° | Rwy Ldg 5000 TDZE 910 Apt Elev 912 |
|--|------------------------|---|

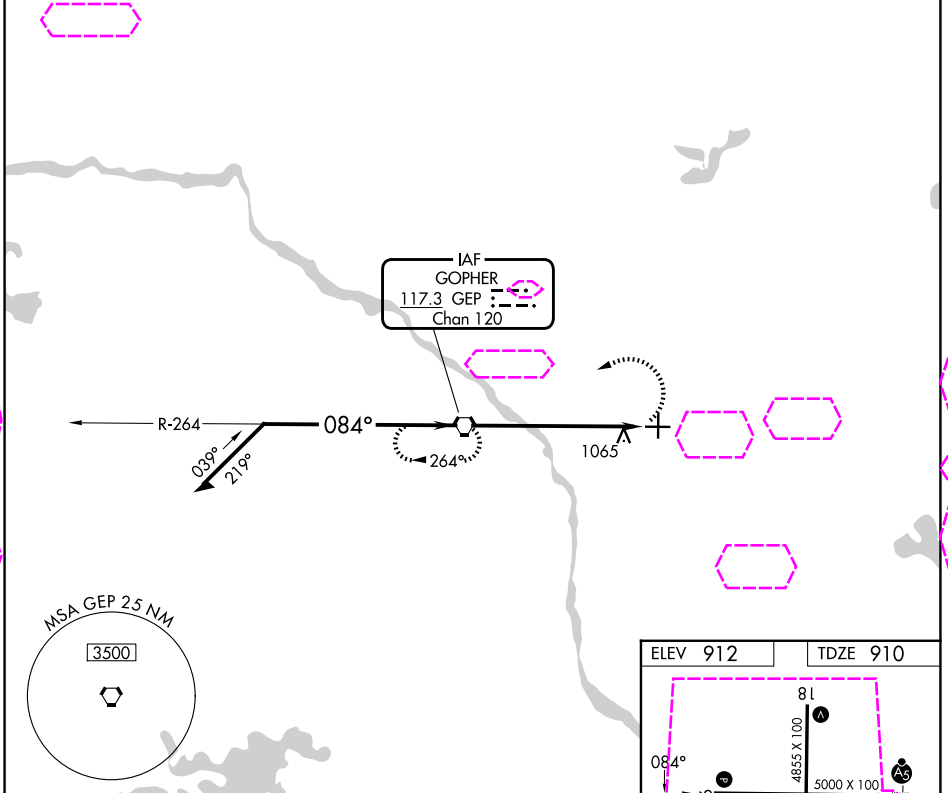
VOR RWY 9

ANOKA COUNTY/BLAINE (JANES FLD) (A.N.E.)

When local altimeter setting not received, use Crystal altimeter setting: increase all MDA 40 feet and increase S-9 visibility Cat C/D 1/8 SM and Circling Cat D 1/4 SM. VDP NA when using Crystal altimeter setting.

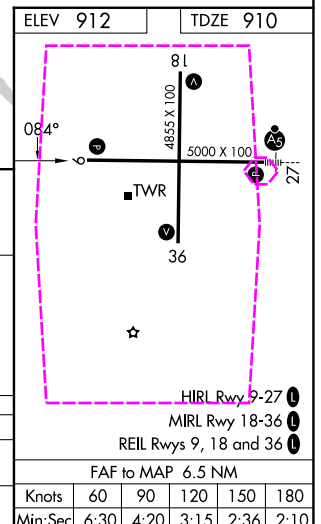
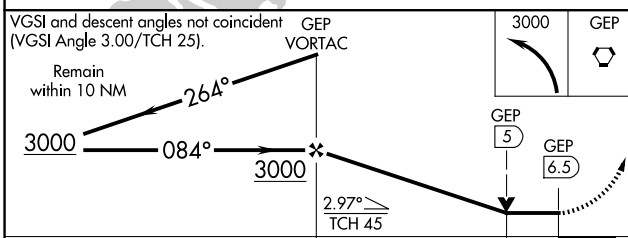
MISSED APPROACH: Climbing left turn to 3000 direct GEP VORTAC and hold.

| | | | | |
|------------------------|--|---------------------------------------|--------------------------|-------------------------|
| ATIS 120.625 | MINNEAPOLIS APP CON 126.5 335.65 | ANOKA TOWER* 132.4 (CTAF) 0 | GND CON 121.85 | UNICOM 122.95 |
|------------------------|--|---------------------------------------|--------------------------|-------------------------|



NC-1, 27 NOV 2025 to 25 DEC 2025

NC-1, 27 NOV 2025 to 25 DEC 2025



| CATEGORY | A | B | C | D |
|----------|--------------------|---|----------------------------|--------------------|
| S-9 | 1400-1 490 (500-1) | | 1400-1 3/8 490 (500-1 1/8) | |
| CIRCLING | 1400-1 488 (500-1) | | 1460-1 1/2 548 (600-1 1/2) | 1580-2 668 (700-2) |

MINNEAPOLIS, MINNESOTA
Amdt 12E 03NOV22

ANOKA COUNTY/BLAINE (JANES FLD) (A.N.E.)
45°09'N-93°13'W

VOR RWY 9