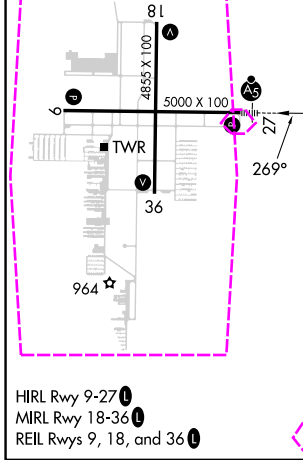
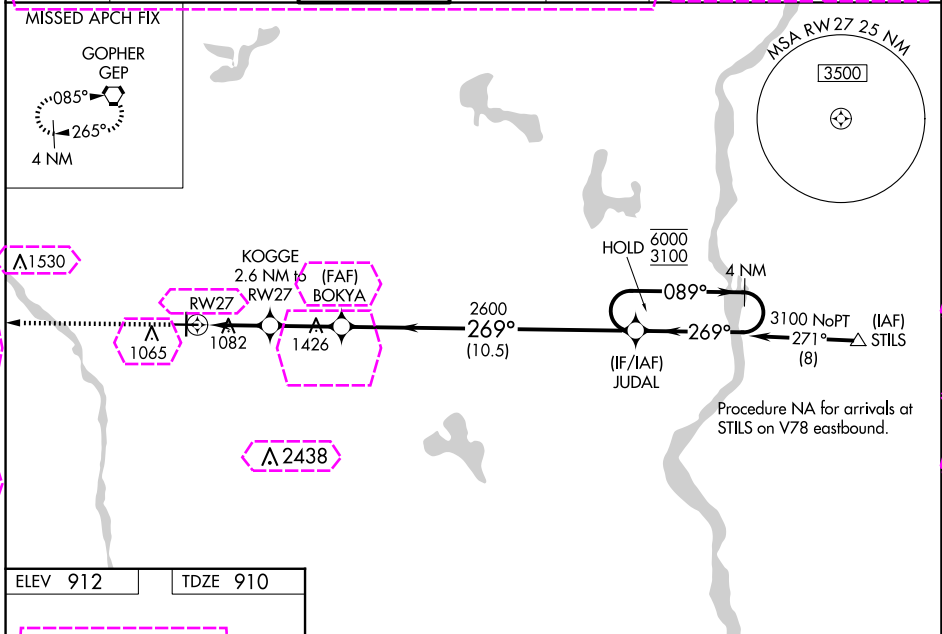


WAAS CH 78300 W27A	APP CRS 269°	Rwy Idg 5000	TDZE 910
		Apt Elev 912	

RNAV (GPS) RWY 27

ANOKA COUNTY/BLAINE (JANES FLD) (A.N.E.)

RNP APCH - GPS.					MALSR 		MISSED APPROACH: Climb to 2700 direct GEP VORTAC and hold, continue climb-in-hold to 2700.	
For uncompensated Baro-VNAV systems, LNAV/VNAV NA below -16°C or above 54°C. When local altimeter setting not received, use Crystal altimeter setting: increase LPV DA to 1131 feet; increase LNAV/VNAV DA to 1361 feet and all visibilities 1/8 SM, increase all MDA 40 feet and visibility Cat C/D 1/4 SM, and Circling visibility Cat D 1/4 SM. Baro-VNAV and VDP NA when using Crystal altimeter setting. For inop ALS when using Crystal altimeter setting, increase LNAV Cat C/D visibility to 1 3/8 SM.								
ATIS 120.625	MINNEAPOLIS APP CON 126.5 335.65	ANOKA TOWER* 132.4 (CTAF)	GND CON 121.85	CLNC DEL 121.3	CLNC DEL 121.85 (When twr closed)	UNICOM 122.95		



2700	GEP	JUDAL	4 NM Holding Pattern	
	KOGGE 2.6 NM to RW27	BOKYA 2600		
	1.2 NM to RW27	1780		
	1.4 NM	2600		
	2.6 NM	10.5 NM		
		089° → 6000		
		← 269° 3100		
		GP 3.00°		
		TCH 49		
CATEGORY	A	B	C	D
LPV DA		1110-1/2	200 (200-1/2)	
LNAV/VNAV DA		1340-3/4	430 (500-3/4)	
LNAV MDA	1340-1/2	430 (500-1/2)	1340-3/4	430 (500-3/4)
CIRCLING	1400-1	488 (500-1)	1420-1 1/2	1580-2
			508 (600-1 1/2)	668 (700-2)

NC-1, 30 OCT 2025 to 27 NOV 2025

NC-1, 30 OCT 2025 to 27 NOV 2025

MINNEAPOLIS, MINNESOTA

AL-5202 (FAA)

25331

WAAS CH 78300 W27A	APP CRS 269°	Rwy Ldg 5000
		TDZE 910
		Apt Elev 912

RNAV (GPS) RWY 27

ANOKA COUNTY/BLAINE (JANES FLD) (A.N.E.)

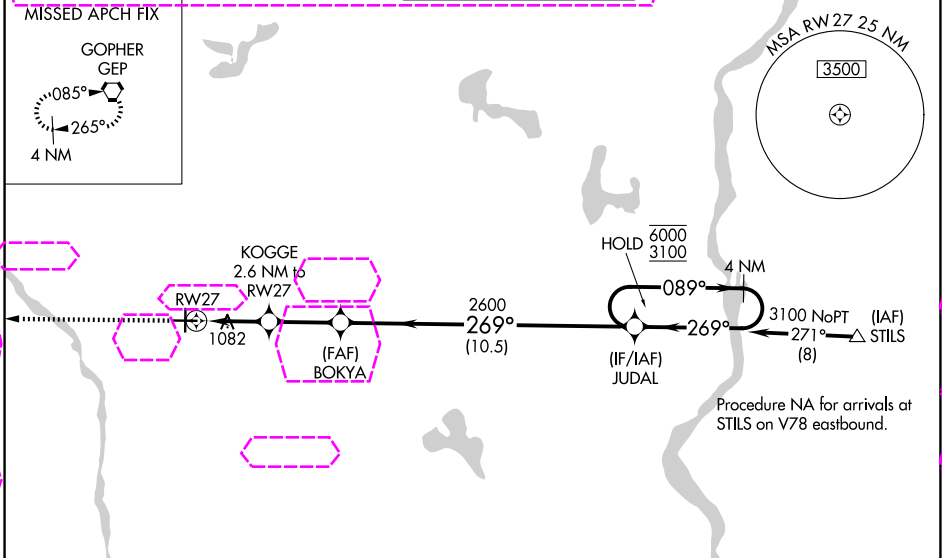
RNP APCH - GPS.

▼ For uncompensated Baro-VNAV systems, LNAV/VNAV NA below -16°C or above 54°C. When local altimeter setting not received, use Crystal altimeter setting: increase LPV DA to 1131 feet; increase LNAV/VNAV DA to 1361 feet and all visibilities ½ SM, increase all MDA 40 feet and visibility Cat C/D ¼ SM, and Circling visibility Cat D ¼ SM. Baro-VNAV and VDP NA when using Crystal altimeter setting. For inop ALS when using Crystal altimeter setting, increase LNAV Cat C/D visibility to 1¾ SM.

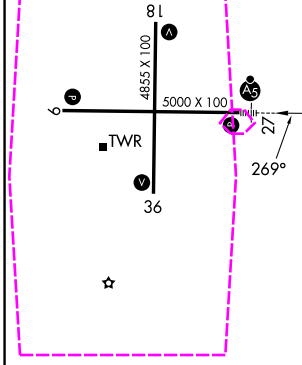


MISSED APPROACH: Climb to 2700 direct GEP VORTAC and hold, continue climb-in-hold to 2700.

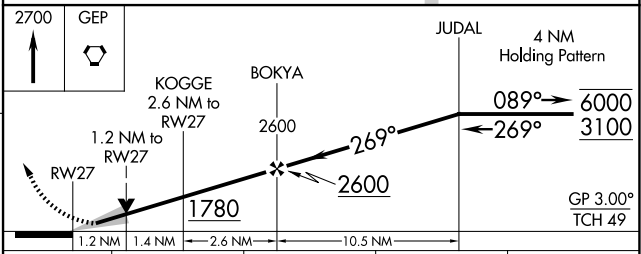
ATIS 120.625	MINNEAPOLIS APP CON 126.5 335.65	ANOKA TOWER* 132.4 (CTAF) 0	GND CON 121.85	UNICOM 122.95
------------------------	--	---------------------------------------	--------------------------	-------------------------



ELEV 912	TDZE 910
----------	----------



HIRL Rwy 9-27
MIRL Rwy 18-36
REIL Rwy 9, 18, and 36



CATEGORY	A	B	C	D
LPV DA		1110-½	200 (200-½)	
LNAV/VNAV DA		1340-¾	430 (500-¾)	
LNAV MDA	1340-½	430 (500-½)	1340-¾	430 (500-¾)
CIRCLING	1400-1	488 (500-1)	1420-1½ 508 (600-1½)	1580-2 668 (700-2)

MINNEAPOLIS, MINNESOTA
Amdt 1 08SEP22

ANOKA COUNTY/BLAINE (JANES FLD) (A.N.E.)
45°09'N-93°13'W
RNAV (GPS) RWY 27

NC-1, 27 NOV 2025 to 25 DEC 2025