

MINNEAPOLIS, MINNESOTA

AL-5202 (FAA)

23110

RNAV (GPS) RWY 18

ANOKA COUNTY/BLAINE (JANES FLD) (A.N.E.)

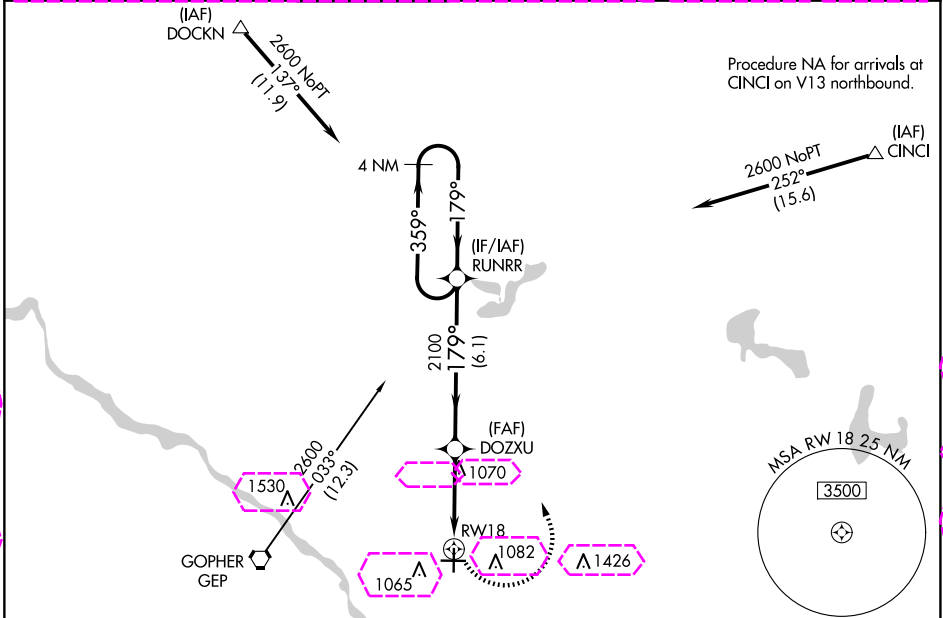
APP CRS	Rwy Idg	4855
179°	TDZE	912
	Apt Elev	912

RNP APCH - GPS.

When local altimeter setting not received, use Crystal altimeter setting and increase all MDA 40 feet and Circling Cat D visibility ¼ SM.
 VDP NA when using Crystal altimeter setting.

MISSED APPROACH: Climbing left turn to 2600 direct RUNRR and hold.

ATIS 120.625	MINNEAPOLIS APP CON 126.5 335.65	ANOKA TOWER* 132.4 (CTAF)	GND CON 121.85	CLNC DEL 121.3	CLNC DEL 121.85 (When twr closed)	UNICOM 122.95
------------------------	--	-------------------------------------	--------------------------	--------------------------	--	-------------------------

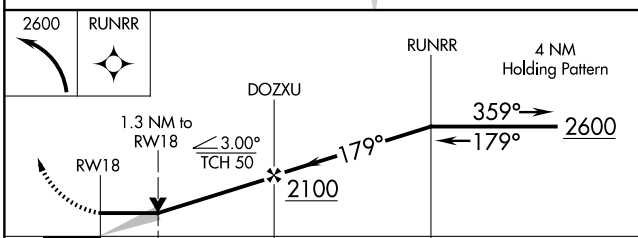
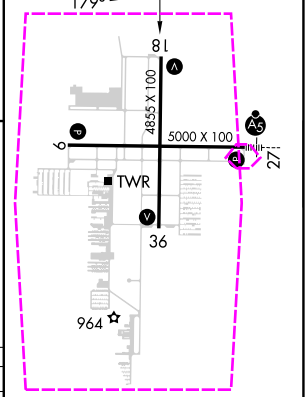


NC-1, 30 OCT 2025 to 27 NOV 2025

NC-1, 30 OCT 2025 to 27 NOV 2025



ELEV 912	TDZE 912
----------	----------



CATEGORY	A	B	C	D
LNVA MDA	1380-1	468 (500-1)	1380-1 3/8	468 (500-1 3/8)
CIRCLING	1400-1	488 (500-1)	1460-1 1/2	1580-2
			548 (600-1 1/2)	668 (700-2)

- HIRL Rwy 9-27
- MIRL Rwy 18-36
- REIL Rws 9, 18 and 36

MINNEAPOLIS, MINNESOTA
 Orig-G 03NOV22

ANOKA COUNTY/BLAINE (JANES FLD) (A.N.E.)
 45°09'N-93°13'W
RNAV (GPS) RWY 18

MINNEAPOLIS, MINNESOTA

AL-5202 (FAA)

25331

RNAV (GPS) RWY 18

ANOKA COUNTY/BLAINE (JANES FLD) (A.N.E.)

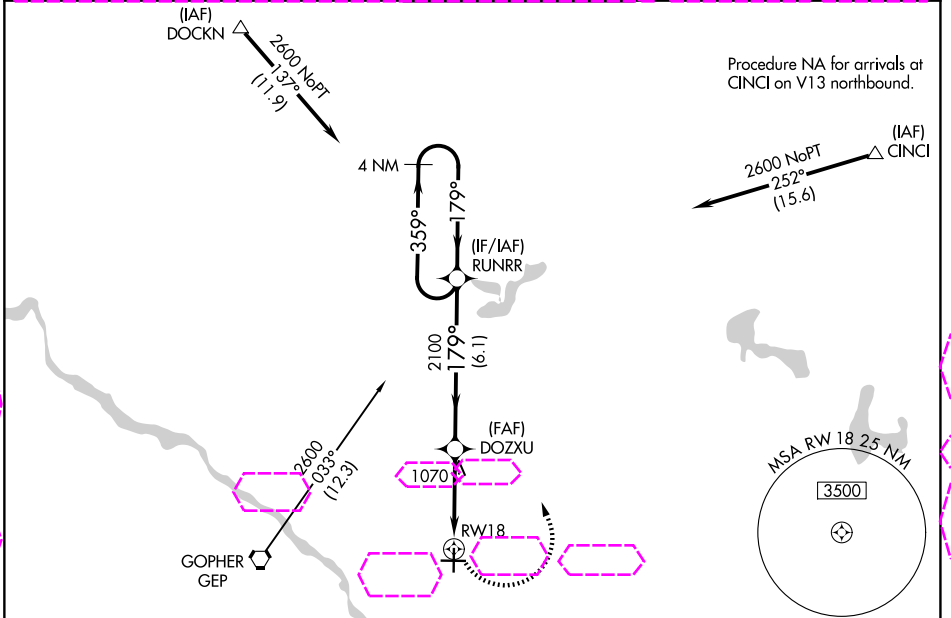
APP CRS	Rwy Ldg	4855
179°	TDZE	912
	Apt Elev	912

RNP APCH - GPS.

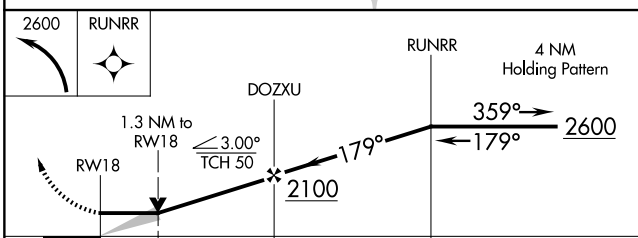
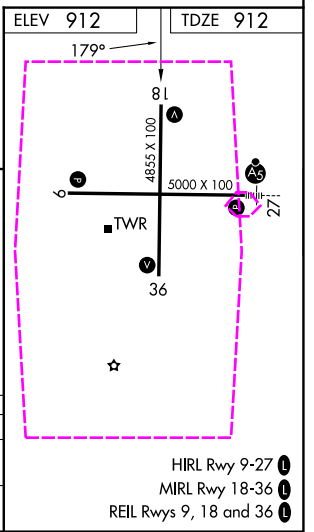
When local altimeter setting not received, use Crystal altimeter setting and increase all MDA 40 feet and Circling Cat D visibility ¼ SM.
 VDP NA when using Crystal altimeter setting.

MISSED APPROACH: Climbing left turn to 2600 direct RUNRR and hold.

ATIS 120.625	MINNEAPOLIS APP CON 126.5 335.65	ANOKA TOWER* 132.4 (CTAF)	GND CON 121.85	UNICOM 122.95
------------------------	--	-------------------------------------	--------------------------	-------------------------



Procedure NA for arrival on GEP VORTAC airway radials 315 CW 103.



CATEGORY	A	B	C	D
LNVA MDA	1380-1	468 (500-1)	1380-1 3/8	468 (500-1 3/8)
CIRCLING	1400-1	488 (500-1)	1460-1 1/2	1580-2
			548 (600-1 1/2)	668 (700-2)

MINNEAPOLIS, MINNESOTA
 Orig-G 03NOV22

ANOKA COUNTY/BLAINE (JANES FLD) (A.N.E.)
 45°09'N-93°13'W
RNAV (GPS) RWY 18

- HIRL Rwy 9-27
- MIRL Rwy 18-36
- REIL Rws 9, 18 and 36

NC-1, 27 NOV 2025 to 25 DEC 2025

NC-1, 27 NOV 2025 to 25 DEC 2025