


LOC/DME I-ANE 111.15 Chan 48 (Y)	APP CRS 269°	Rwy Idg 5000 TDZE 910 Apt Elev 912
--	------------------------	---

ILS or LOC RWY 27

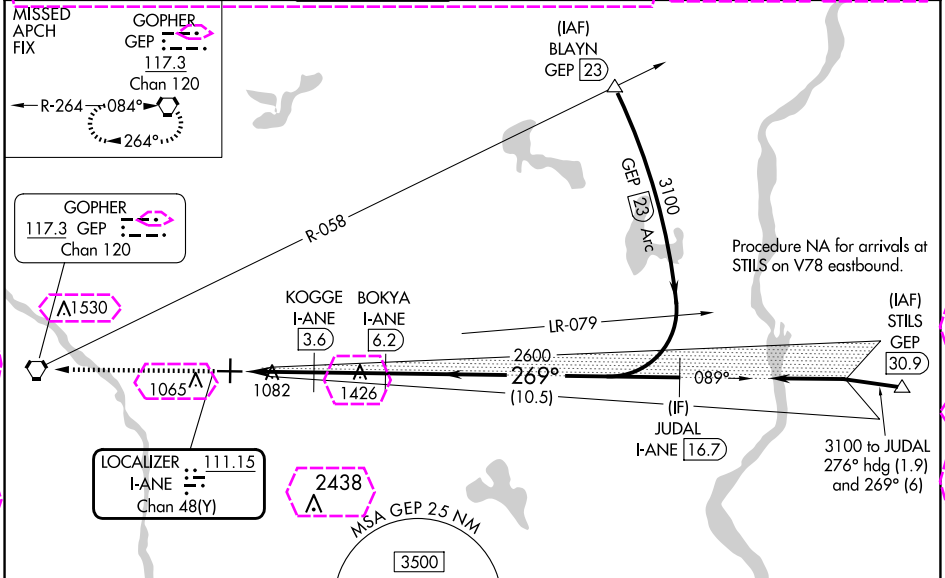
ANOKA COUNTY/BLAINE (JANES FLD) (A.N.E.)

DME required. RADAR required for procedure entry at BLAYN.

⚠ VDP NA when using Crystal altimeter setting. When local altimeter setting not received, use Crystal altimeter setting and increase S-ILS 27 DA to 1131 feet; increase all MDAs 40 feet and S-LOC 27 visibility Cat C/D ¼ SM, and Circling visibility Cat D ¼ SM. For inop ALS when using Crystal altimeter setting, increase S-LOC 27 Cat C/D visibility to 1 ¾ SM.

MALSR  MISSED APPROACH: Climb to 2700 direct GEP VORTAC and hold, continue climb-in-hold to 2700.

ATIS 120.625	MINNEAPOLIS APP CON 126.5 335.65	ANOKA TOWER* 132.4 (CTAF) 0	GND CON 121.85	CLNC DEL 121.3	CLNC DEL 121.85 (When twr closed)	UNICOM 122.95
------------------------	--	---------------------------------------	--------------------------	--------------------------	--	-------------------------



MINNEAPOLIS, MINNESOTA

AL-5202 (FAA)

25331

LOC/DME I-ANE 111.15 Chan 48 (Y)	APP CRS 269°	Rwy Ldg 5000 TDZE 910 Apt Elev 912
--	------------------------	---

ILS or LOC RWY 27
ANOKA COUNTY/BLAINE (JANES FLD) (A.N.E.)

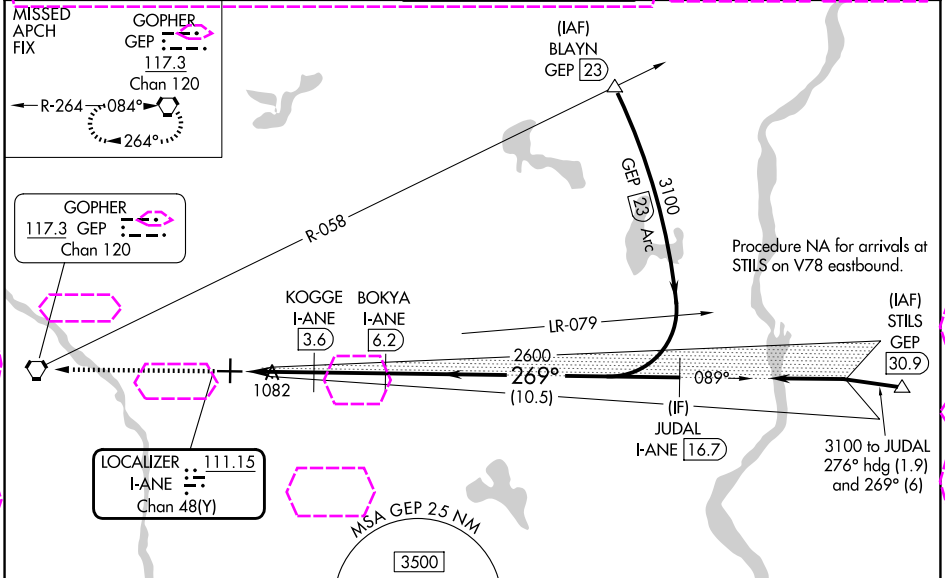
DME required. RADAR required for procedure entry at BLAYN.

⚠ VDP NA when using Crystal altimeter setting. When local altimeter setting not received, use Crystal altimeter setting and increase S-ILS 27 DA to 1131 feet; increase all MDAs 40 feet and S-LOC 27 visibility Cat C/D ¼ SM, and Circling visibility Cat D ¼ SM. For inop ALS when using Crystal altimeter setting, increase S-LOC 27 Cat C/D visibility to 1 ¾ SM.



MISSED APPROACH: Climb to 2700 direct GEP VORTAC and hold, continue climb-in-hold to 2700.

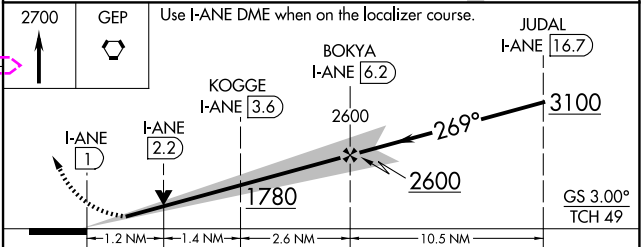
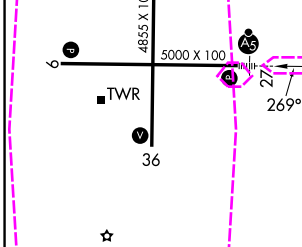
ATIS 120.625	MINNEAPOLIS APP CON 126.5 335.65	ANOKA TOWER* 132.4 (CTAF) 0	GND CON 121.85	UNICOM 122.95
------------------------	--	---------------------------------------	--------------------------	-------------------------



NC-1, 27 NOV 2025 to 25 DEC 2025

NC-1, 27 NOV 2025 to 25 DEC 2025

ELEV 912	TDZE 910
----------	----------



CATEGORY	A	B	C	D
S-ILS 27	1110-½ 200 (200-½)			
S-LOC 27	1340-½	430 (500-½)	1340-¾	430 (500-¾)
CIRCLING	1400-1	488 (500-1)	1420-1½ 508 (600-1½)	1580-2 668 (700-2)

MINNEAPOLIS, MINNESOTA
Amdt 1 08SEP22

45°09'N-93°13'W

ANOKA COUNTY/BLAINE (JANES FLD) (A.N.E.)
ILS or LOC RWY 27