

TACOMA, WASHINGTON

AL-5186 (FAA)

23222

WAAS CH <b>50312</b> <b>W35A</b>	APP CRS <b>347°</b>	Rwy Idg <b>5002</b> TDZE <b>295</b> Apt Elev <b>295</b>
--	------------------------	---

# RNAV (GPS) RWY 35

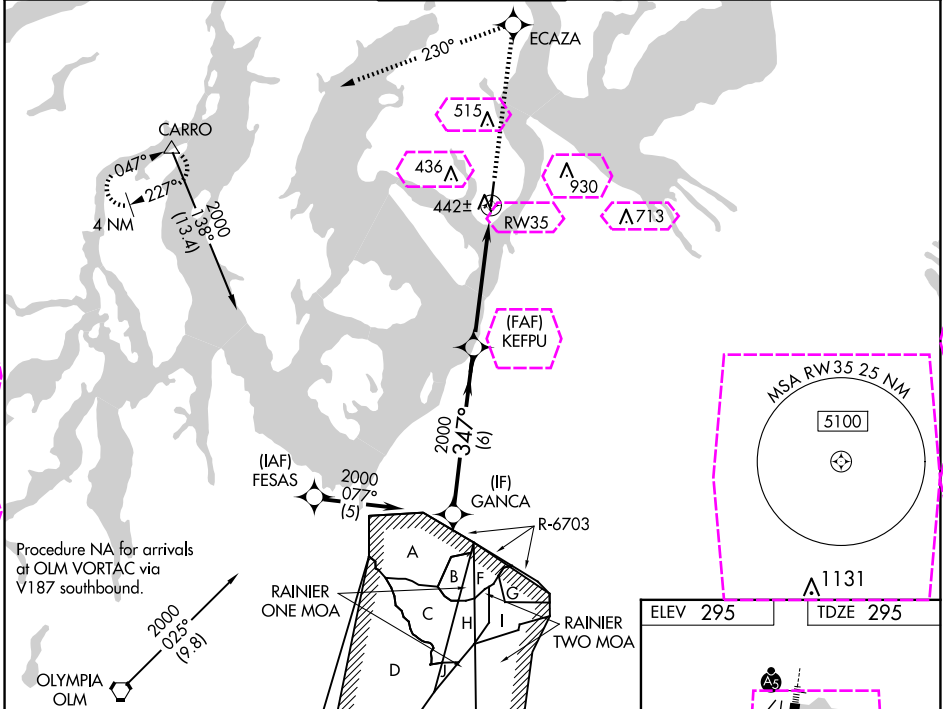
TACOMA NARROWS (TIW)

RNP APCH.

▼ Baro-VNAV NA when using McCord Fld altimeter setting. For uncompensated Baro-VNAV systems, LNAV/VNAV NA below -15°C (5°F) or above 48°C (118°F). Circling NA east of Rwy 17-35. When local altimeter setting not received, use McCord Fld altimeter setting and increase all DA 25 feet and all MDA 40 feet.

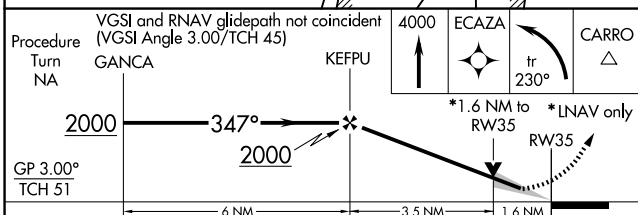
MISSED APPROACH: Climb to 4000 direct ECAZA and left turn via 230° track to CARRO and hold, continue climb-in-hold to 4000.

ATIS <b>124.05</b>	SEATTLE APP CON <b>120.1 290.9</b>	TACOMA TOWER * <b>118.5 (CTAF) 0 253.5</b>	GND CON <b>121.8</b>	UNICOM <b>122.95</b>
-----------------------	---------------------------------------	---	-------------------------	-------------------------

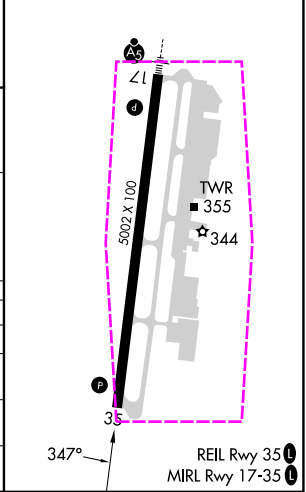


NW-1, 30 OCT 2025 to 27 NOV 2025

NW-1, 30 OCT 2025 to 27 NOV 2025



ELEV 295	TDZE 295
----------	----------



CATEGORY	A	B	C	D
LPV DA		561-7/8	266 (300-7/8)	
LNAV/VNAV DA		769-1 3/4	474 (500-1 3/4)	
LNAV MDA	840-1	545 (600-1)	840-1 1/2 545 (600-1 1/2)	840-1 3/4 545 (600-1 3/4)
<b>CIRCLING</b>	980-1	685 (700-1)	980-2 685 (700-2)	980-2 1/4 685 (700-2 1/4)

TACOMA, WASHINGTON  
Orig-C 08OCT20

47°16'N-122°35'W

# TACOMA NARROWS (TIW) RNAV (GPS) RWY 35

TACOMA, WASHINGTON

AL-5186 (FAA)

25331

WAAS CH <b>50312</b> <b>W35A</b>	APP CRS <b>347°</b>	Rwy Ldg <b>5002</b> TDZE <b>295</b> Apt Elev <b>295</b>
--	------------------------	---

# RNAV (GPS) RWY 35

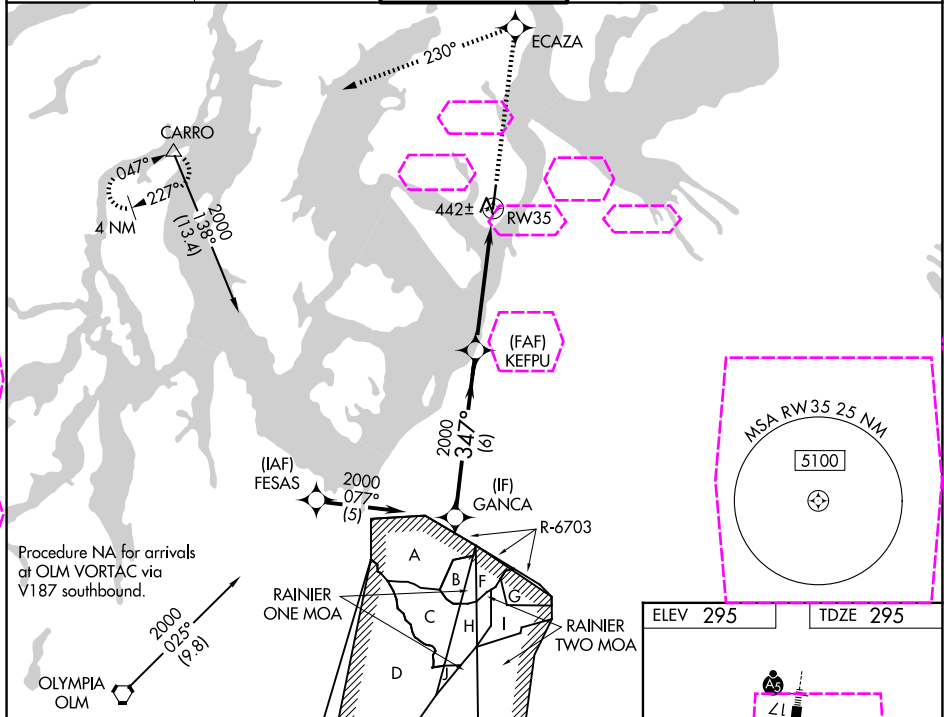
TACOMA NARROWS (TIW)

RNP APCH.

**▼** Baro-VNAV NA when using McCord Fld altimeter setting. For uncompensated Baro-VNAV systems, LNAV/VNAV NA below -15°C (5°F) or above 48°C (118°F). Circling NA east of Rwy 17-35. When local altimeter setting not received, use McCord Fld altimeter setting and increase all DA 25 feet and all MDA 40 feet.

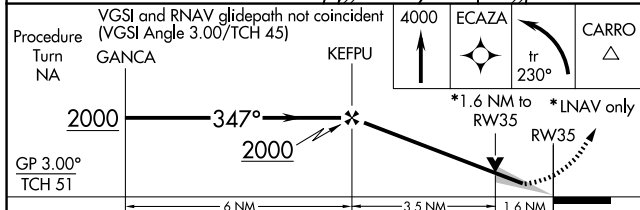
**MISSED APPROACH:** Climb to 4000 direct ECAZA and left turn via 230° track to CARRO and hold, continue climb-in-hold to 4000.

ATIS <b>124.05</b>	SEATTLE APP CON <b>120.1 290.9</b>	TACOMA TOWER * <b>118.5 (CTAF) 0 253.5</b>	GND CON <b>121.8</b>	UNICOM <b>122.95</b>
-----------------------	---------------------------------------	---	-------------------------	-------------------------

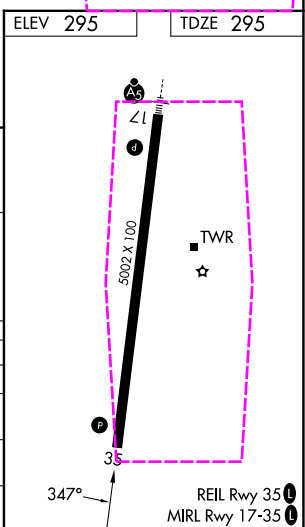


NW-1, 127 NOV 2025 to 25 DEC 2025

NW-1, 127 NOV 2025 to 25 DEC 2025



CATEGORY	A	B	C	D
LPV DA		561-7/8	266 (300-7/8)	
LNAV/VNAV DA		769-1 3/4	474 (500-1 3/4)	
LNAV MDA	840-1	545 (600-1)	840-1 1/2 545 (600-1 1/2)	840-1 3/4 545 (600-1 3/4)
<b>CIRCLING</b>	980-1	685 (700-1)	980-2 685 (700-2)	980-2 1/4 685 (700-2 1/4)



TACOMA, WASHINGTON  
Orig-C 08OCT20

47°16'N-122°35'W

# TACOMA NARROWS (TIW) RNAV (GPS) RWY 35