

BRainerd, MINNESOTA

AL-5182 (FAA)

25219

LOC/DME I-LEr	APP CRS	Rwy Ldg	7100
109.7	340°	TDZE	1232
Chan 34		Apt Elev	1232

# ILS or LOC/DME RWY 34

BRainerd LAKES RGNL (BRD)

RNP APCH-GPS, from GOLLF.  
DME required. ADF required.

MALSR

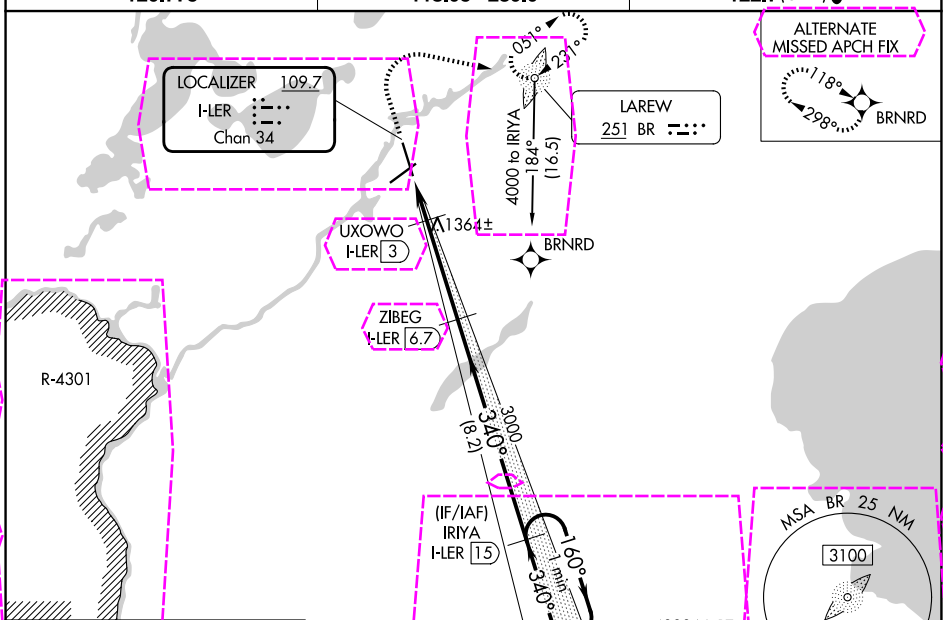
MISSED APPROACH: Climb to 1700 then climbing right turn to 4000 direct BR LOM, continue climb-in-hold to 4000.

▼ VDP NA with Aikin altimeter setting. When local altimeter setting not received, use Aikin altimeter setting: increase all DA to 1484;  
▲ NA increase all MDAs 60 feet and visibility S-LOC 34 Cat C/D ¼ SM and visibility Circling Cat D ¼ SM.

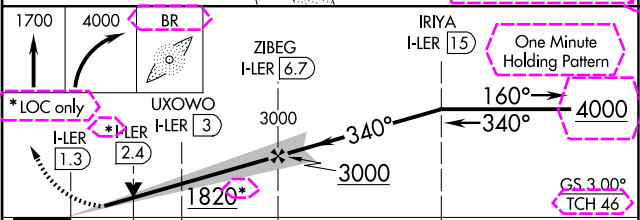
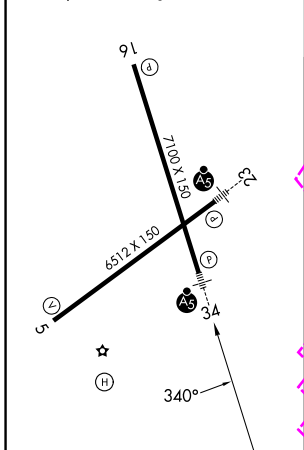
ASOS  
126.775

MINNEAPOLIS CENTER  
118.05 239.0

UNICOM  
122.7(CTAF) 0



ELEV 1232	TDZE 1232
HIRL Rwy 5-23 and 16-34	
REIL Rwy 5 and 16	



CATEGORY	A	B	C	D
S-ILS 34		1432-½	200 (200-½)	
S-LOC 34	1620-½	388 (400-½)	1620-⅝	388 (400-⅝)
CIRCLING	1760-1	528 (600-1)	1760-1½	1860-2 628 (700-2)

BRainerd, MINNESOTA  
Amf 2B 14JUL22

46°24'N-94°08'W

# BRainerd LAKES RGNL (BRD) ILS or LOC/DME RWY 34

NC-1, 30 OCT 2025 to 27 NOV 2025

NC-1, 30 OCT 2025 to 27 NOV 2025

BRainerd, MINNESOTA

AL-5182 (FAA)

25331

LOC/DME I-LEADER <b>109.7</b> Chan 34	APP CRS <b>340°</b>	Rwy Ldg TDZE <b>7100</b> <b>1232</b>	Apt Elev <b>1232</b>
---	------------------------	--	-------------------------

# ILS or LOC RWY 34

BRainerd LAKES RGNL (BRD)

RNP APCH - GPS. From GOLLF.

DME required. ADF required.



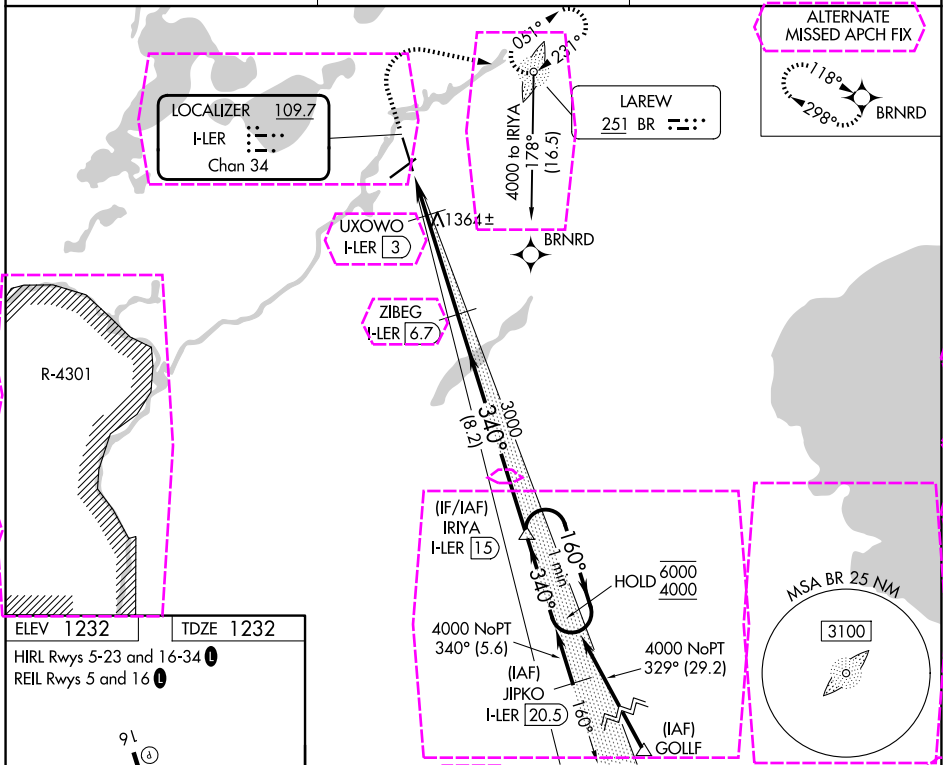
MISSED APPROACH: Climb to 1700 then climbing right turn to 4000 direct LAREW LOM and hold, continue climb-in-hold to 4000.

▼ VDP NA when using AIT altimeter setting. When local altimeter setting not received, use AIT altimeter setting and increase S-ILS 34 DA to 1484 feet; increase all MDAs 60 feet and S-LOC 34 visibility Cat C/D ¼ SM, and Circling visibility Cat D ¼ SM.

ASOS  
**126.775**

MINNEAPOLIS CENTER  
**118.05 239.0**

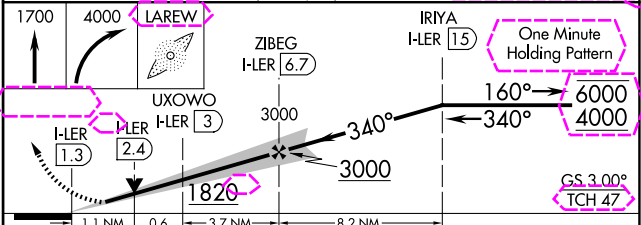
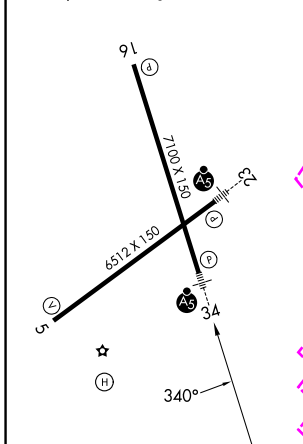
UNICOM  
**122.7 (CTAF) 0**



NC-1, 27 NOV 2025 to 25 DEC 2025

NC-1, 27 NOV 2025 to 25 DEC 2025

ELEV 1232	TDZE 1232
HIRL Rwy 5-23 and 16-34	
REIL Rwy 5 and 16	



CATEGORY	A	B	C	D
S-ILS 34		1432-½	200 (200-½)	
S-LOC 34	1620-½	388 (400-½)	1620-¾	388 (400-¾)
CIRCLING	1760-1	528 (600-1)	1760-1½	1860-2 628 (700-2)

BRainerd, MINNESOTA  
Amdt 3 27NOV25

46°24'N-94°08'W

# BRainerd LAKES RGNL (BRD)

## ILS or LOC RWY 34