

(LINDY8, STL) 24025

LINDBERGH EIGHT DEPARTURE

AL-5178 (FAA)

ST LOUIS RGNL (ALN)
ALTON/ST. LOUIS, ILLINOIS

ATIS
128.0
CLNC DEL
120.2 (when twr closed)
GND CON
120.2
REGIONAL TOWER *
126.0 239.0
ST LOUIS DEP CON
124.2 353.9

**TOP ALTITUDE:
2500**

ST. LOUIS
117.4 STL
Chan 121

VICHY
117.7 VIH
Chan 124

FARMINGTON
115.7 FAM
Chan 104

LITTLE ROCK
113.9 LIT
Chan 86

WALNUT RIDGE
114.5 ARG
Chan 92

EC-3 30 OCT 2025 to 27 NOV 2025

EC-3 30 OCT 2025 to 27 NOV 2025

TAKEOFF MINIMUMS

Rwys 11, 17, 29, 35: Standard.

NOTE: DME and RADAR required.

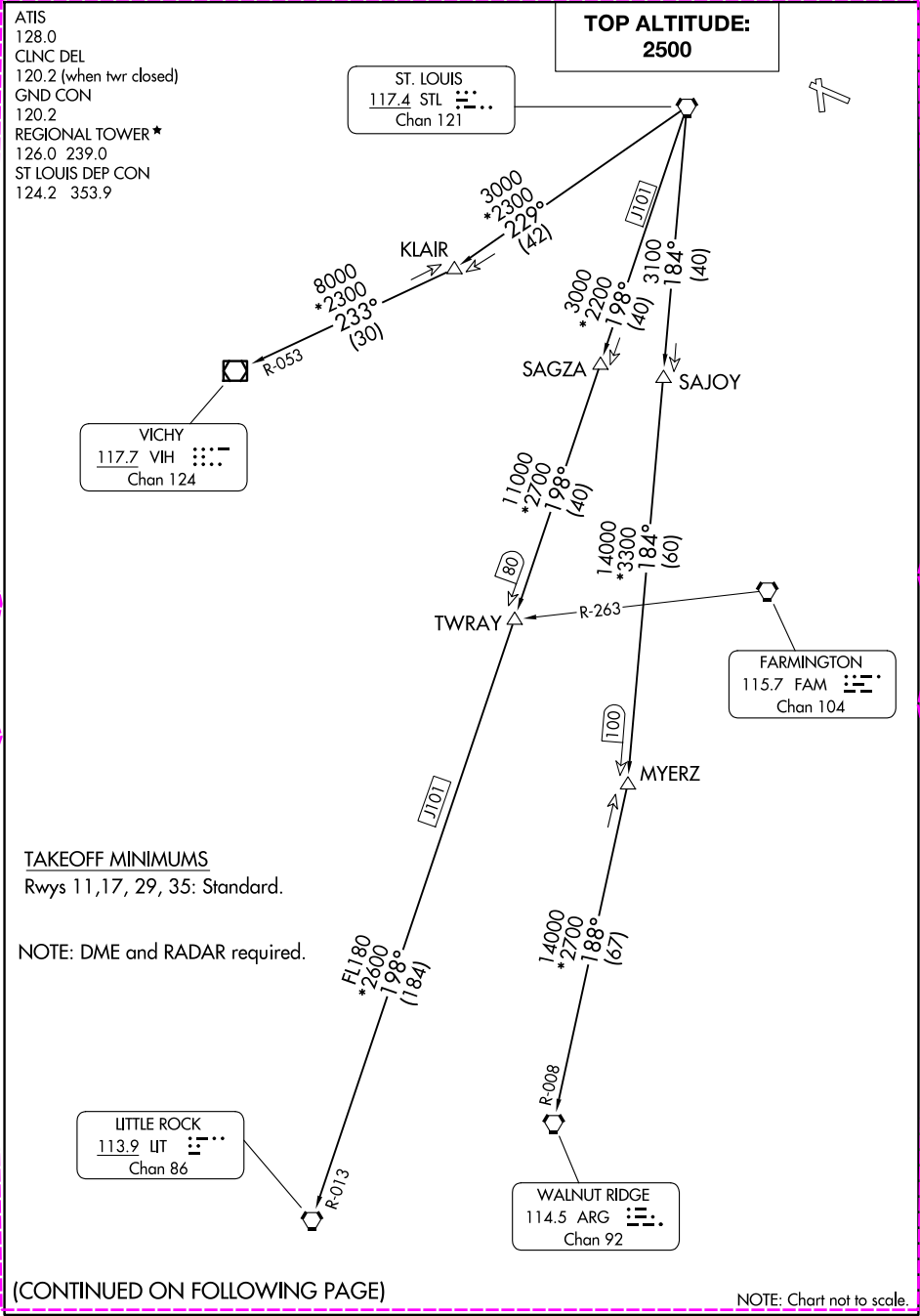
(CONTINUED ON FOLLOWING PAGE)

NOTE: Chart not to scale.

LINDBERGH EIGHT DEPARTURE

(LINDY8, STL) 17JUN21

ALTON/ST. LOUIS, ILLINOIS
ST LOUIS RGNL (ALN)



(LINDY9.STL) 25331

LINDBERGH NINE DEPARTURE

ST LOUIS RGNL (ALN)
ALTON/ST. LOUIS, ILLINOIS

AL-5178 (FAA)

DME and RADAR required.

ST LOUIS DEP CON
124.2 353.9
ATIS
128.0
CLNC DEL
120.2 (when twr closed)
GND CON
120.2
REGIONAL TOWER *
126.0 239.0

**TOP ALTITUDE:
ASSIGNED BY ATC**

ST LOUIS
117.4 STL :...
Chan 121

VICHY
117.Z VIH :...
Chan 124

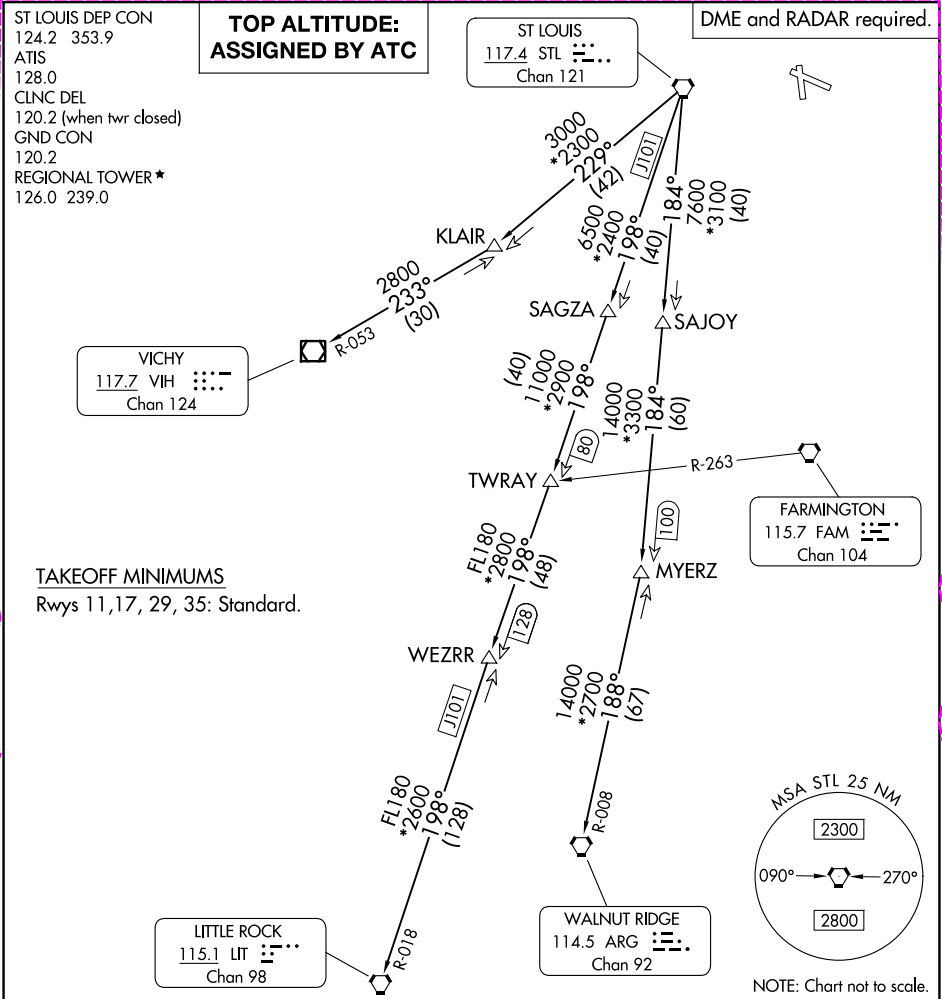
FARMINGTON
115.7 FAM :...
Chan 104

LITTLE ROCK
115.1 LIT :...
Chan 98

WALNUT RIDGE
114.5 ARG :...
Chan 92

TAKEOFF MINIMUMS

Rwys 11, 17, 29, 35: Standard.



EC-3 127 NOV 2025 to 25 DEC 2025

EC-3 27 NOV 2025 to 25 DEC 2025

DEPARTURE ROUTE DESCRIPTION

TAKEOFF ALL RUNWAYS: Climb on assigned heading for RADAR vectors to appropriate route, maintain ATC assigned altitude and expect filed altitude 10 minutes after departure.

LITTLE ROCK TRANSITION (LINDY9.LIT): From over STL VORTAC on STL R-198 and LIT R-018 to LIT VORTAC.

MYERZ TRANSITION (LINDY9.MYERZ): From over STL VORTAC on STL R-184 to MYERZ.

VICHY TRANSITION (LINDY9.VIH): From over STL VORTAC on STL R-229 and VIH R-053 to VIH VOR/DME.

WALNUT RIDGE TRANSITION (LINDY9.ARG): From over STL VORTAC on STL R-184 and ARG R-008 to ARG VORTAC.

LINDBERGH NINE DEPARTURE

(LINDY9.STL) 27NOV25

ALTON/ST. LOUIS, ILLINOIS
ST LOUIS RGNL (ALN)