

WICHITA, KANSAS

AL-5141 (FAA)

21112

VORTAC ICT 113.8 Chan 85	APP CRS 275°	Rwy Idg TDZE Apt Elev 1409	N/A N/A 1409
--	------------------------	---	---------------------------

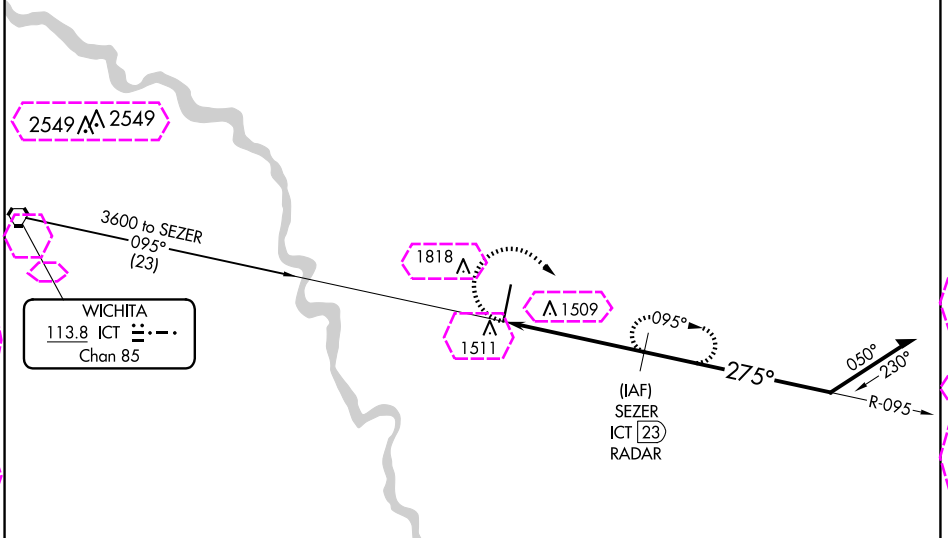
VOR-B
BEECH FACTORY (B.F.C)

Obtain local altimeter setting on CTAF; when not received, use Wichita Dwight D Eisenhower NH altimeter setting and increase all MDA 40 feet and increase Cat C and D visibility 1/4 mile.

MISSED APPROACH: Climbing right turn to 3000 on ICT VORTAC R-095 to SEZER/ICT 23 DME/RADAR and hold.

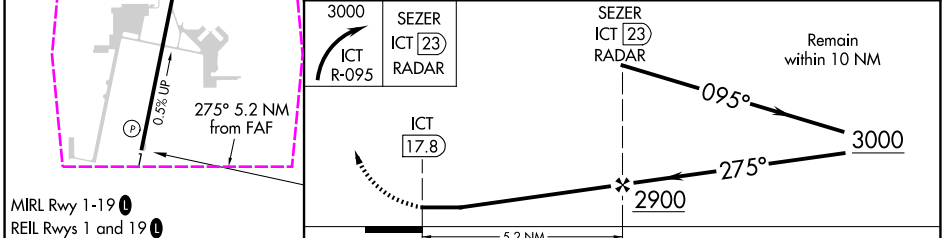
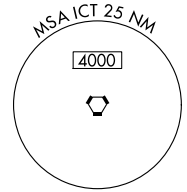
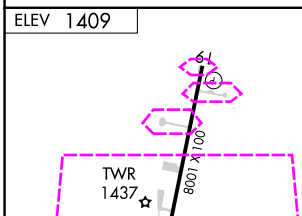
AWOS-3PT 119.45	WICHITA APP CON 134.8 269.1	BEECH TOWER ★ 126.8 (CTAF) 313.6	GND CON 121.7	CLNC DEL 125.0 (When tower closed)	UNICOM 122.95
---------------------------	---------------------------------------	--	-------------------------	---	-------------------------

RADAR or DME REQUIRED



NC-2, 30 OCT 2025 to 27 NOV 2025

NC-2, 30 OCT 2025 to 27 NOV 2025



FAF to MAP 5.2 NM

Knots	60	90	120	150	180
Min:Sec	5:12	3:28	2:36	2:05	1:44

CATEGORY	A	B	C	D
CIRCLING	1840-1 431 (500-1)	2120-1 711 (800-1)	2120-2 711 (800-2)	2120-2 1/4 711 (800-2 1/4)

WICHITA, KANSAS
Amdt 4 25JUL13

37°42'N-97°13'W

BEECH FACTORY (B.F.C)
VOR-B

WICHITA, KANSAS

AL-5141 (FAA)

25331

VORTAC ICT 113.8 Chan 85	APP CRS 275°	Rwy Ldg N/A TDZE N/A Apt Elev 1409
--	------------------------	--

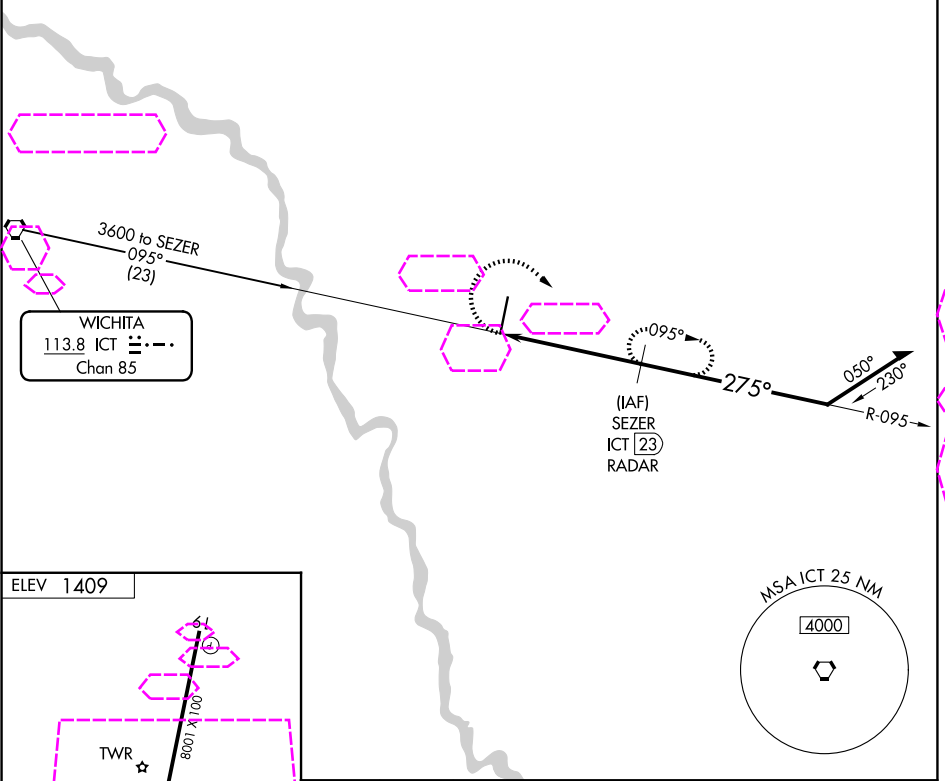
VOR-B
BEECH FACTORY (B.E.C)

NA Obtain local altimeter setting on CTAF; when not received, use Wichita Dwight D Eisenhower NH altimeter setting and increase all MDA 40 feet and increase Cat C and D visibility ¼ mile.

MISSED APPROACH: Climbing right turn to 3000 on ICT VORTAC R-095 to SEZER/ICT 23 DME/RADAR and hold.

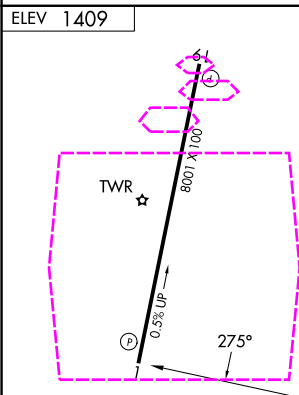
AWOS-3PT 119.45	WICHITA APP CON 134.8 269.1	BEECH TOWER ★ 126.8 (CTAF) 313.6	GND CON 121.7	UNICOM 122.95
---------------------------	---------------------------------------	--	-------------------------	-------------------------

RADAR or DME REQUIRED



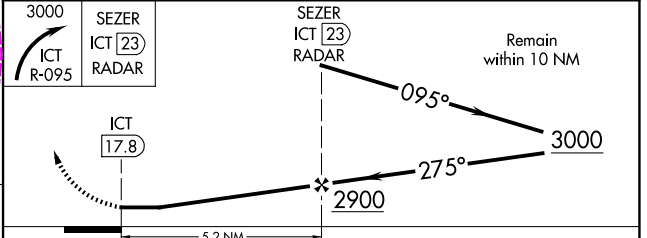
NC-2, 27 NOV 2025 to 25 DEC 2025

NC-2, 27 NOV 2025 to 25 DEC 2025



MIRL Rwy 1-19
REIL Rwys 1 and 19

FAF to MAP 5.2 NM					
Knots	60	90	120	150	180
Min:Sec	5:12	3:28	2:36	2:05	1:44



CATEGORY	A	B	C	D
CIRCLING	1840-1 431 (500-1)	2120-1 711 (800-1)	2120-2 711 (800-2)	2120-2 ¼ 711 (800-2¼)

WICHITA, KANSAS
Amdt 4 25JUL13

37°42'N-97°13'W

BEECH FACTORY (B.E.C)
VOR-B