

DANVILLE, ILLINOIS

AL-5117 (FAA)

23334

APP CRS 030°	Rwy Idg 6006
	TDZE 674
	Apt Elev 697

RNAV (GPS) RWY 3

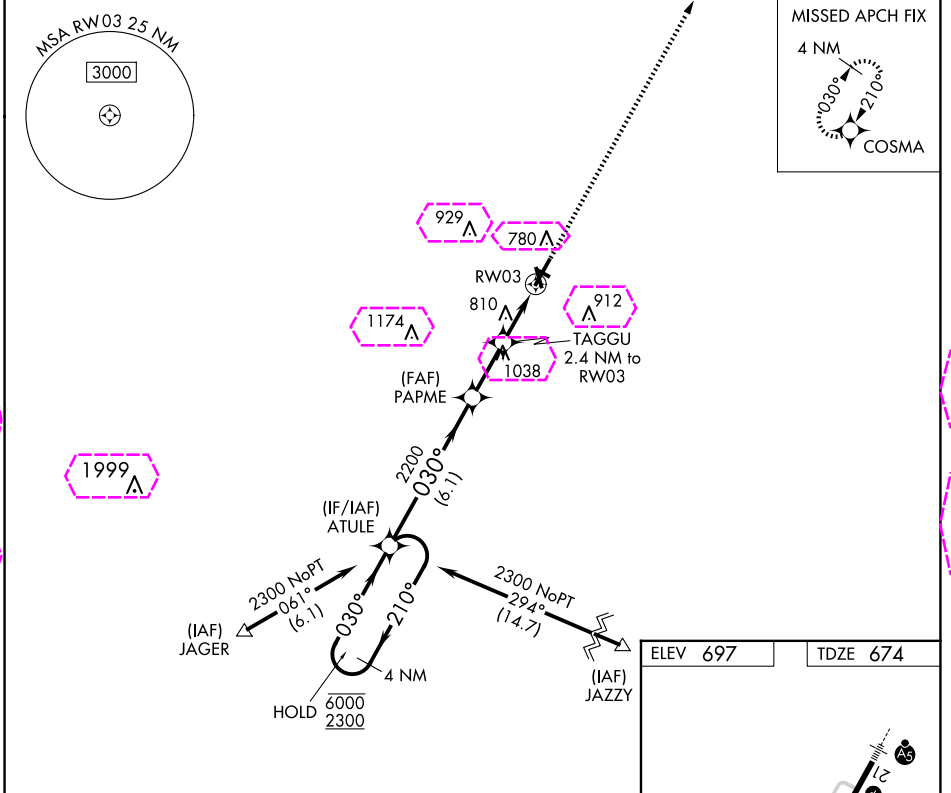
VERMILION RGNL (DNTV)

RNP APCH - GPS.

⚠ Circling NA to Rwys 12 and 30.
⚠ Rwy 3 helicopter visibility reduction below 3/4 SM NA.

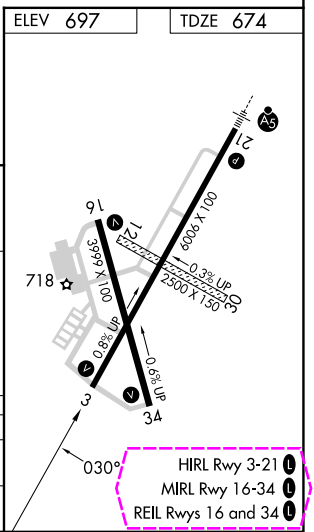
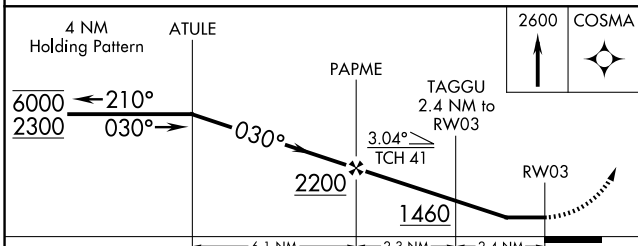
MISSED APPROACH: Climb to 2600 direct COSMA and hold.

AWOS-3 119.275	CHAMPAIGN APP CON ★ 121.35 285.65	CLNC DEL 121.7	UNICOM 122.7 (CTAF) 0
--------------------------	---	--------------------------	---------------------------------



EC-3: 30 OCT 2025 to 27 NOV 2025

EC-3: 30 OCT 2025 to 27 NOV 2025



CATEGORY	A	B	C	D
LNAV MDA	1120-1	446 (500-1)	1120-1½ 446 (500-1½)	1120-1½ 446 (500-1½)
CIRCLING	1160-1	463 (500-1)	1240-1½ 543 (600-1½)	1340-2 643 (700-2)

HIRL Rwy 3-21 **1**

MIRL Rwy 16-34 **1**

REIL Rwys 16 and 34 **1**

DANVILLE, ILLINOIS
Orig-C 30NOV23

40°12'N-87°36'W

RNAV (GPS) RWY 3

VERMILION RGNL (DNTV)

DANVILLE, ILLINOIS

AL-5117 (FAA)

25331

APP CRS 030°	Rwy Ldg 6006
	TDZE 674
	Apt Elev 697

RNAV (GPS) RWY 3

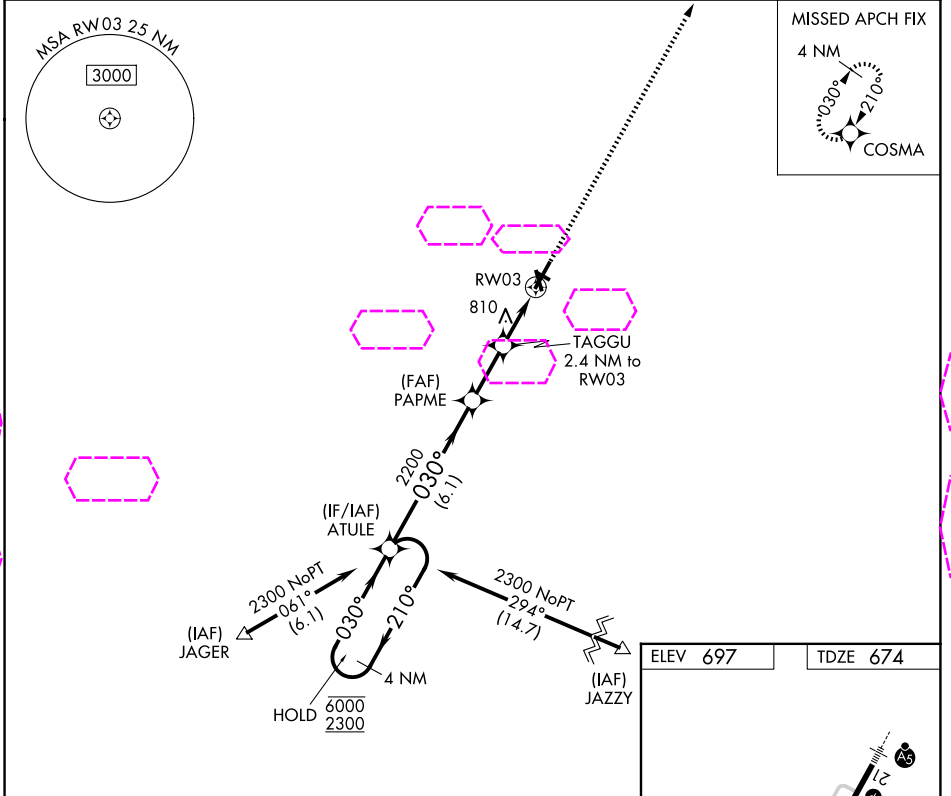
VERMILION RGNL (DNL)

RNP APCH - GPS.

▼ Circling NA to Rwys 12 and 30.
▲ Rwy 3 helicopter visibility reduction below ¾ SM NA.

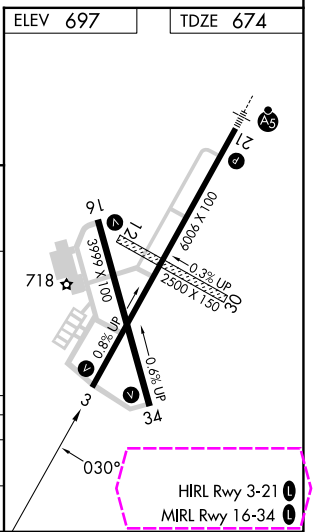
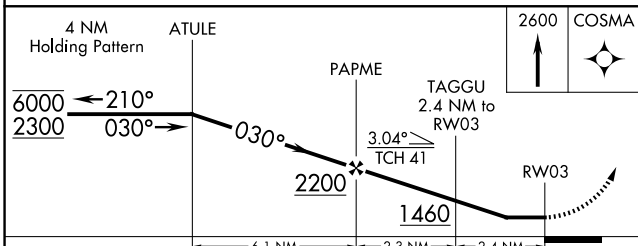
MISSED APPROACH: Climb to 2600 direct COSMA and hold.

AWOS-3 119.275	CHAMPAIGN APP CON ★ 121.35 285.65	CLNC DEL 121.7	UNICOM 122.7 (CTAF) 0
--------------------------	---	--------------------------	---------------------------------



EC-3 127 NOV 2025 to 25 DEC 2025

EC-3 27 NOV 2025 to 25 DEC 2025



CATEGORY	A	B	C	D
LNAV MDA	1120-1	446 (500-1)	1120-1½ 446 (500-1½)	1120-1½ 446 (500-1½)
CIRCLING	1160-1	463 (500-1)	1240-1½ 543 (600-1½)	1340-2 643 (700-2)

DANVILLE, ILLINOIS
Orig-C 30NOV23

40°12'N-87°36'W

RNAV (GPS) RWY 3

VERMILION RGNL (DNL)