

DANVILLE, ILLINOIS

AL-5117 (FAA)

23334

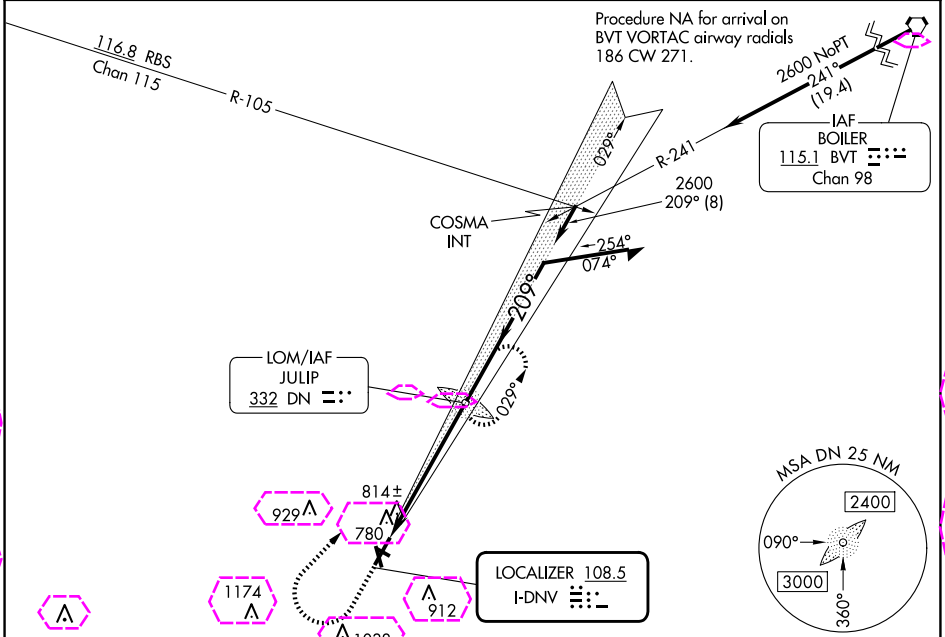
LOC I-DNV	APP CRS	Rwy Idg	6006
108.5	209°	TDZE	697
		Apt Elev	697

ILS or LOC RWY 21

VERMILION RGNL (DNV)

ADF required.	MALSR	MISSED APPROACH: Climb to 1400 then climbing right turn to 2600 direct JULIP LOM and hold, continue climb-in-hold to 2600.
NA Circling NA to Rws 12 and 30.		

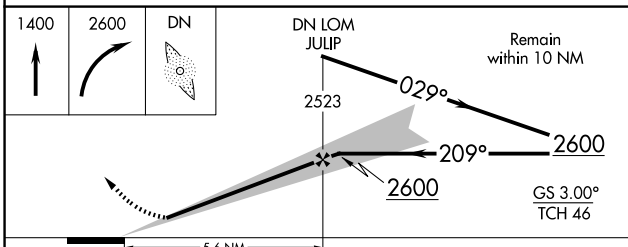
AWOS-3	CHAMPAIGN APP CON *	CLNC DEL	UNICOM
119.275	121.35 285.65	121.7	122.7 (CTAF)



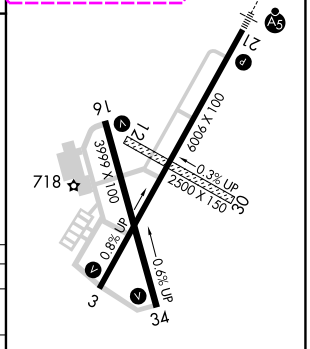
EC-3 30 OCT 2025 to 27 NOV 2025

EC-3 30 OCT 2025 to 27 NOV 2025

ELEV 697	TDZE 697
HIRL Rwy 3-21	209°
MIRL Rwy 16-34	
REIL Rws 16 and 34	



CATEGORY	A	B	C	D
S-ILS 21	897-1/2 200 (200-1/2)			
S-LOC 21	1080-1/2	383 (400-1/2)	1080-5/8	383 (400-5/8)
CIRCLING	1160-1	463 (500-1)	1240-1 1/2	1340-2
			543 (600-1 1/2)	643 (700-2)



FAF to MAP 5.6 NM					
Knots	60	90	120	150	180
Min:Sec	5:36	3:44	2:48	2:14	1:52

DANVILLE, ILLINOIS
Amdt 8 30NOV23

40°12'N-87°36'W

VERMILION RGNL (DNV)

ILS or LOC RWY 21

DANVILLE, ILLINOIS

AL-5117 (FAA)

25331

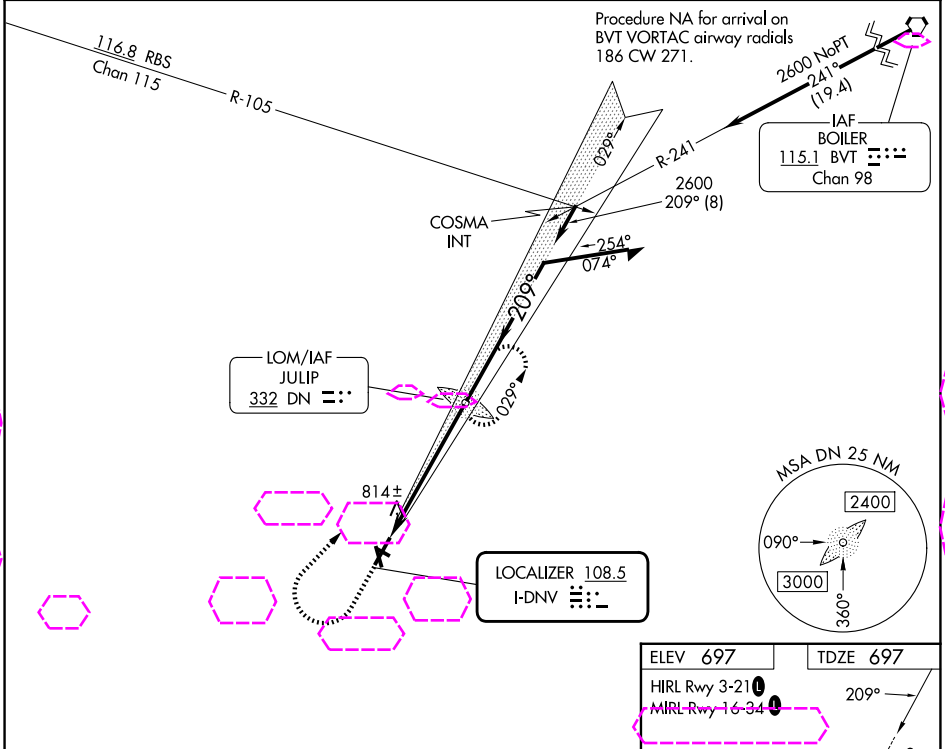
LOC I-DNV	APP CRS	Rwy Ldg	6006
108.5	209°	TDZE	697
		Apt Elev	697

ILS or LOC RWY 21

VERMILION RGNL (DNV)

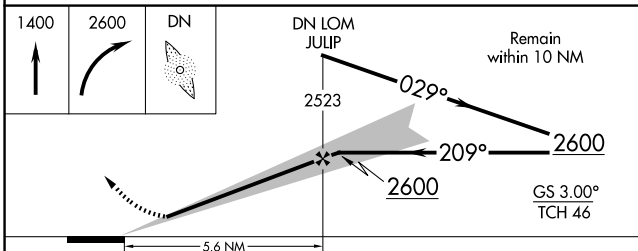
ADF required.	MALSR	MISSED APPROACH: Climb to 1400 then climbing right turn to 2600 direct JULIP LOM and hold, continue climb-in-hold to 2600.
NA Circling NA to Rwy 12 and 30.		

AWOS-3	CHAMPAIGN APP CON *	CLNC DEL	UNICOM
119.275	121.35 285.65	121.7	122.7 (CTAF)

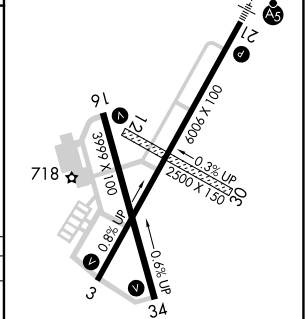


EC-3 127 NOV 2025 to 25 DEC 2025

EC-3 127 NOV 2025 to 25 DEC 2025



ELEV 697	TDZE 697
HIRL Rwy 3-21	209°
MIRL Rwy 16-34	



CATEGORY	A	B	C	D
S-ILS 21	897-1/2 200 (200-1/2)			
S-LOC 21	1080-1/2	383 (400-1/2)	1080-5/8	383 (400-5/8)
CIRCLING	1160-1	463 (500-1)	1240-1 1/2	1340-2
			543 (600-1 1/2)	643 (700-2)

FAF to MAP 5.6 NM					
Knots	60	90	120	150	180
Min:Sec	5:36	3:44	2:48	2:14	1:52

DANVILLE, ILLINOIS
Amdt 8 30NOV23

40°12'N-87°36'W

VERMILION RGNL (DNV)

ILS or LOC RWY 21