

WAAS CH 45531 W02A	APP CRS 015°	Rwy Ldg TDZE 751 Aprt Elev 759	6451
--	------------------------	--	-------------

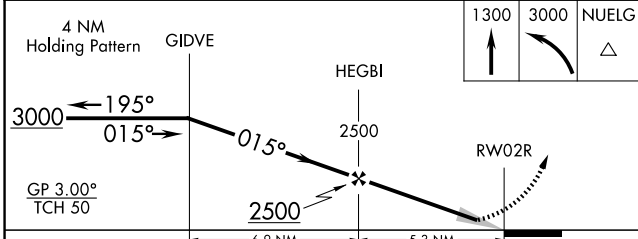
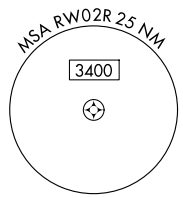
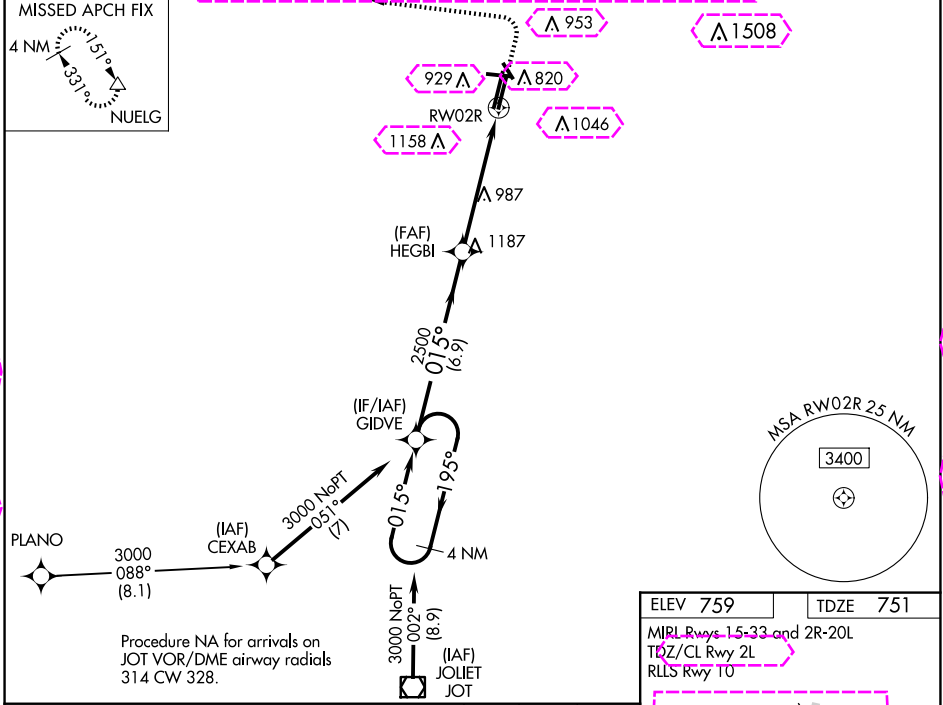
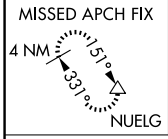
RNAV (GPS) RWY 2R

DUPAGE (DPA)

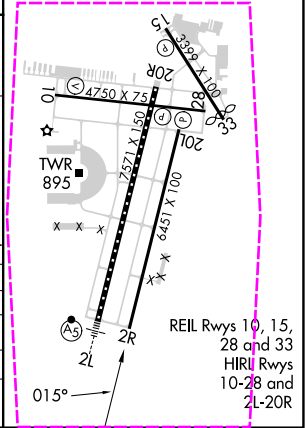
⚠ For uncompensated Baro-VNAV systems, LNAV/VNAV NA below -16°C (4°F) or above 54°C (130°F). DME/DME RNP-0.3 NA. When local altimeter setting not received, use Aurora altimeter setting: increase LPV DA to 1038 feet, LNAV/VNAV DA to 1148 feet and visibility LNAV/VNAV all Cats ¼ SM; increase all MDA 40 feet and visibility LNAV Cat C/D visibility ⅓ SM and Circling Cat C/D ¼ SM. VDP and Baro-VNAV NA when using Aurora altimeter setting. Circling Rwy 15, 28, 33 NA at night.

MISSED APPROACH:
Climb to 1300 then climbing left turn to 3000 direct NUELG and hold.

ATIS 132.075	CHICAGO APP CON 133.5 349.0	DUPAGE TOWER 120.9 257.8	GND CON 121.8	CLNC DEL 119.75
------------------------	---------------------------------------	------------------------------------	-------------------------	---------------------------



ELEV 759	TDZE 751
MRL Rws 15-33 and 2R-20L TDZ/CL Rwy 2L RLLS Rwy 10	



CATEGORY	A	B	C	D
LPV DA		1001-1	250 (300-1)	
LNAV/VNAV DA		1111-1½	360 (400-1½)	
LNAV MDA	1240-1	489 (500-1)	1240-1¾	489 (500-1½)
CIRCLING	1260-1 501 (600-1)	1360-1 601 (700-1)	1460-2 701 (800-2)	1460-2¼ 701 (800-2¼)

EC-3: 30 OCT 2025 to 27 NOV 2025

EC-3: 30 OCT 2025 to 27 NOV 2025

WAAS CH 45531 W02A	APP CRS 015°	Rwy Ldg TDZE 751 Apt Elev 759	6451
--	------------------------	---	-------------

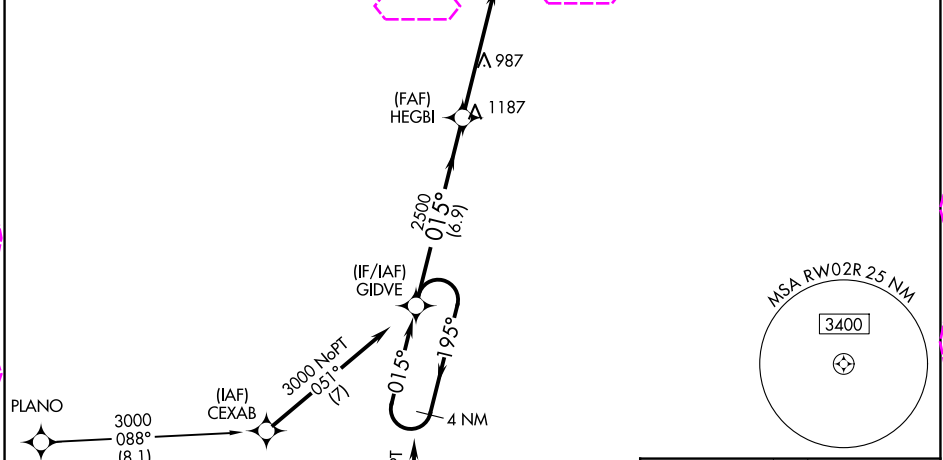
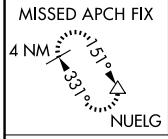
RNAV (GPS) RWY 2R

DUPAGE (DPA)

⚠ For uncompensated Baro-VNAV systems, LNAV/VNAV NA below -16°C (4°F) or above 54°C (130°F). DME/DME RNP-0.3 NA. When local altimeter setting not received, use Aurora altimeter setting: increase LPV DA to 1038 feet, LNAV/VNAV DA to 1148 feet and visibility LNAV/VNAV all Cats ¼ SM; increase all MDA 40 feet and visibility LNAV Cat C/D visibility ⅓ SM and Circling Cat C/D ¼ SM. VDP and Baro-VNAV NA when using Aurora altimeter setting. Circling Rwy 15, 28, 33 NA at night.

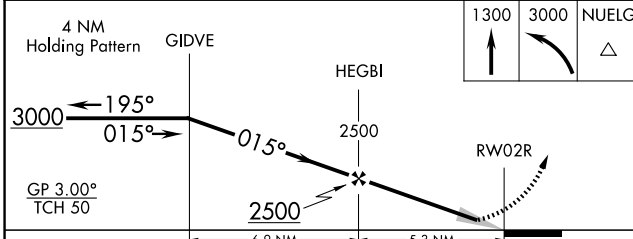
MISSED APPROACH:
Climb to 1300 then climbing left turn to 3000 direct NUELG and hold.

ATIS 132.075	CHICAGO APP CON 133.5 349.0	DUPAGE TOWER 120.9 257.8	GND CON 121.8
------------------------	---------------------------------------	------------------------------------	-------------------------

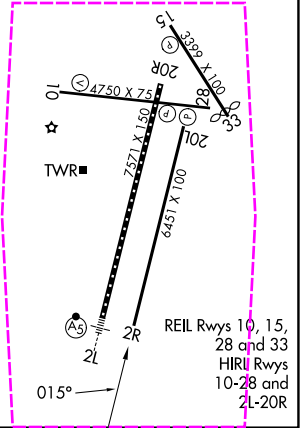


Procedure NA for arrivals on JOT VOR/DME airway radials 314 CW 328.

ELEV 759	TDZE 751
MIRL Rwy 15-33 and 2R-20L	
TDZL/RCLS Rwy 2L	
RLLS Rwy 10	



CATEGORY	A	B	C	D
LPV DA		1001-1	250 (300-1)	
LNAV/VNAV DA		1111-1½	360 (400-1½)	
LNAV MDA	1240-1	489 (500-1)	1240-1¾	489 (500-1½)
CIRCLING	1260-1 501 (600-1)	1360-1 601 (700-1)	1460-2 701 (800-2)	1460-2¼ 701 (800-2¼)



EC-3 127 NOV 2025 to 25 DEC 2025

EC-3 27 NOV 2025 to 25 DEC 2025