

LOC I-DPA 109.5	APP CRS 097°	Rwy Ldg 4750
		TDZE 756
		Apt Elev 759

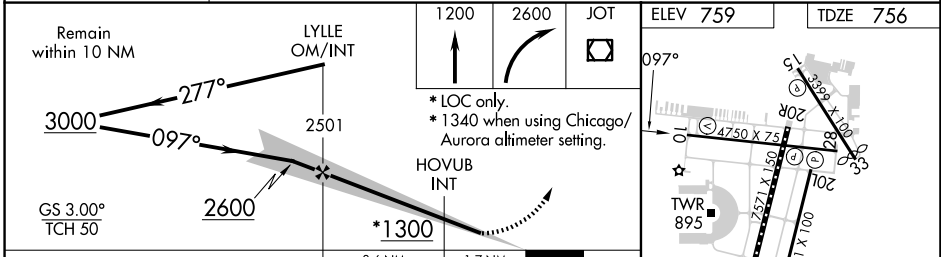
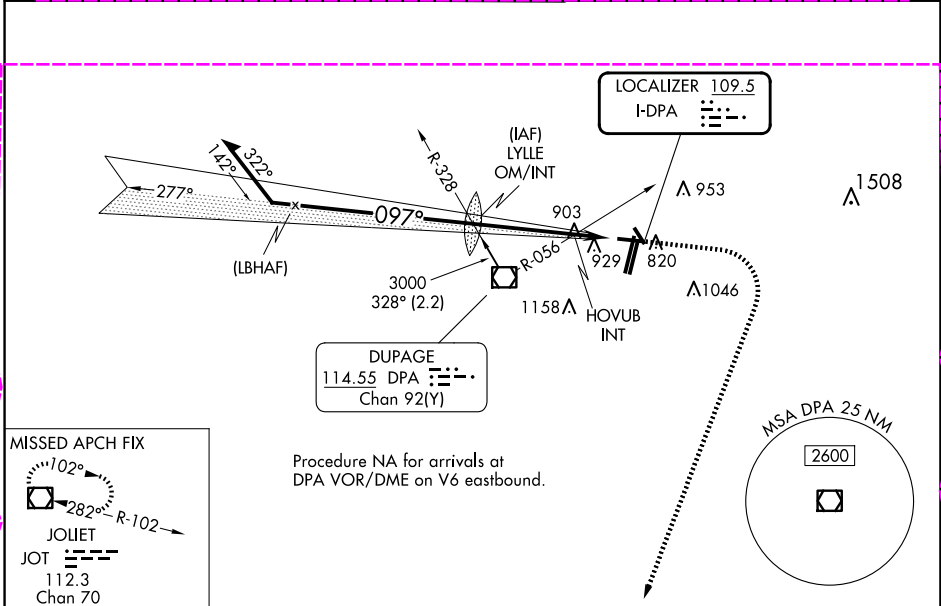
ILS or LOC RWY 10

DUPAGE (DPA)

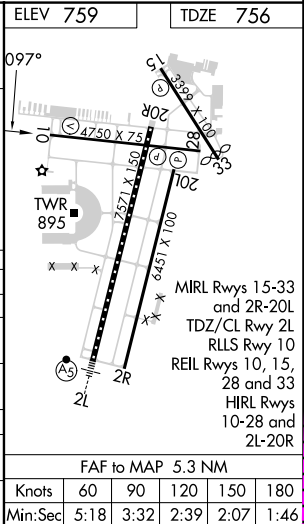
⚠ When local altimeter setting not received, use Chicago/Aurora altimeter setting: increase S-ILS 10 DA to 993 feet; increase all MDA 40 feet and visibility S-LOC 10 Cats C/D and HOVUB INT minimums S-LOC 10 Cats C/D 1/8 SM, and Circling and HOVUB INT minimums Circling Cats C/D 1/4 SM. Circling Rwy 15, 28, 33 NA at night.

MISSED APPROACH: Climb to 1200 then climbing right turn to 2600 direct JOT VOR/DME and hold.

ATIS 132.075	CHICAGO APP CON 133.5 349.0	DUPAGE TOWER 120.9 257.8	GND CON 121.8	CLNC DEL 119.75
------------------------	---------------------------------------	------------------------------------	-------------------------	---------------------------



CATEGORY	A	B	C	D
S-ILS 10		956-3/4	200 (200-3/4)	
S-LOC 10	1300-1	544 (600-1)	1300-1 1/8	544 (600-1 1/8)
CIRCLING	1300-1 541 (600-1)	1360-1 601 (700-1)	1460-2 701 (800-2)	1460-2 1/4 701 (800-2 1/4)
HOVUB INT MINIMUMS (DUAL VOR RECEIVERS REQUIRED)				
S-LOC 10	1220-1	464 (500-1)	1220-1 3/8	464 (500-1 3/8)
CIRCLING	1260-1 501 (600-1)	1360-1 601 (700-1)	1460-2 701 (800-2)	1460-2 1/4 701 (800-2 1/4)



EC-3 30 OCT 2025 to 27 NOV 2025

EC-3 30 OCT 2025 to 27 NOV 2025

FAF to MAP 5.3 NM	Knots	60	90	120	150	180
	Min:Sec	5:18	3:32	2:39	2:07	1:46

LOC I-DPA 109.5	APP CRS 097°	Rwy Ldg TDZE Apt Elev	4750 756 759
---------------------------	------------------------	-----------------------------	---

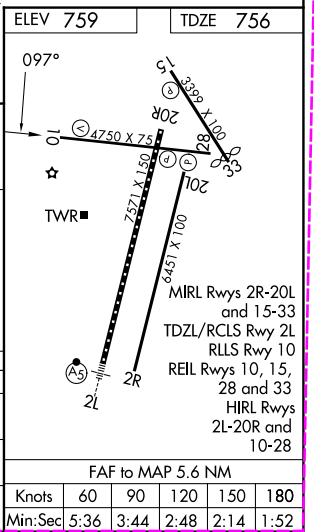
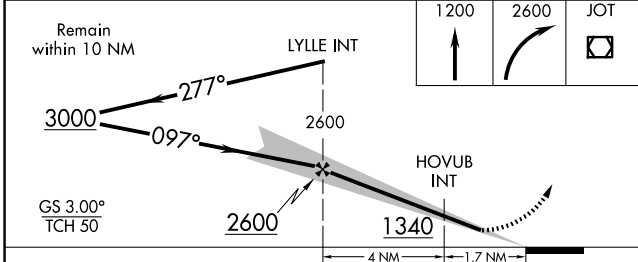
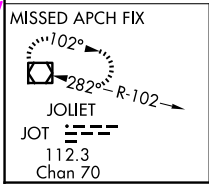
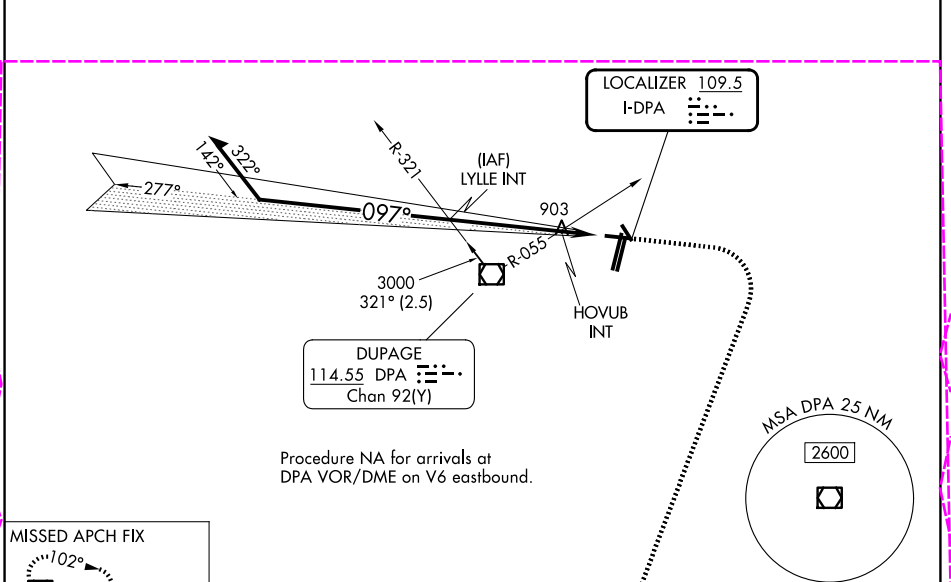
ILS or LOC RWY 10

DUPAGE (DPA)

⚠ Circling Rwy 15, 28, 33 NA at night. When local altimeter setting not received, use ARR altimeter setting and increase S-ILS 10 DA to 993 feet; increase all MDAs 40 feet; and Circling visibility Cat C/D ¼ SM.

MISSED APPROACH: Climb to 1200 then climbing right turn to 2600 direct JOT VOR/DME and hold.

ATIS 132.075	CHICAGO APP CON 133.5 349.0	DUPAGE TOWER 120.9 257.8	GND CON 121.8
------------------------	---------------------------------------	------------------------------------	-------------------------



CATEGORY	A	B	C	D
S-ILS 10		956-¾	200 (200-¾)	
S-LOC 10	1220-1	464 (500-1)	1220-1⅓	464 (500-1⅓)
CIRCLING	1260-1 501 (600-1)	1360-1 601 (700-1)	1460-2 701 (800-2)	1460-2¼ 701 (800-2¼)

EC-3 127 NOV 2025 to 25 DEC 2025

EC-3 27 NOV 2025 to 25 DEC 2025