

ROCHESTER, MINNESOTA

AI-5041 (FAA)

24193

WAAS CH 69621 W03A	APP CRS 027°	Rwy Idg 7300 TDZE 1317 Apt Elev 1317
--	------------------------	---

RNAV (GPS) RWY 3

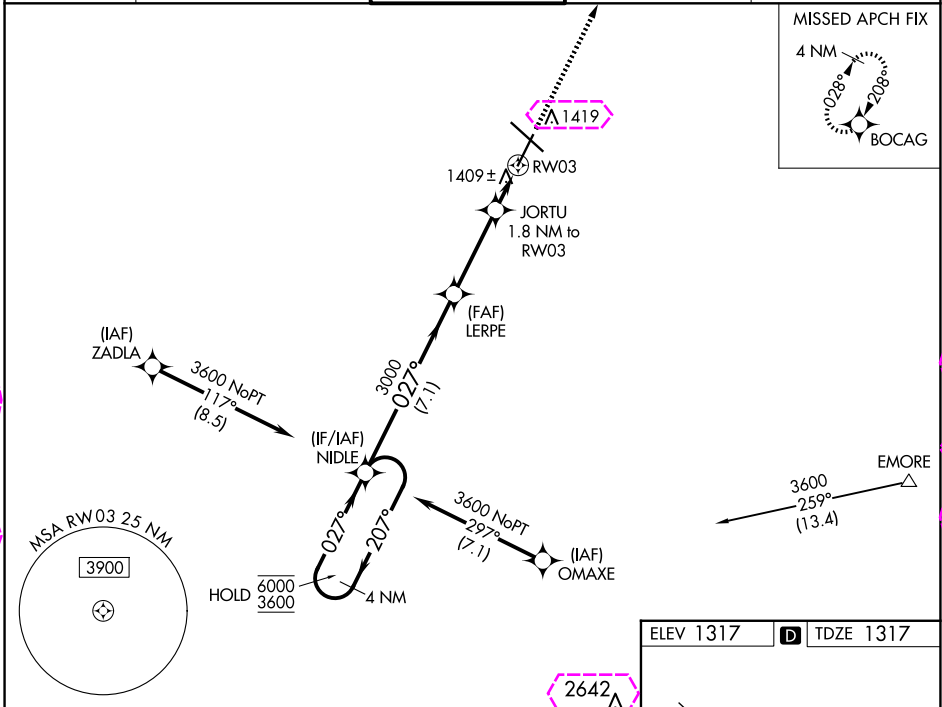
ROCHESTER INTL (RST)

RNP APCH - GPS.

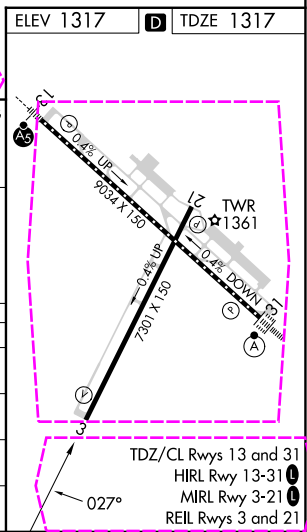
ASR For uncompensated Baro-VNAV systems, LNAV/VNAV NA below -28°C or above 54°C.

MISSED APPROACH: Climb to 3400 direct BOCAG and hold, continue climb-in-hold to 4800.

ATIS 120.5	ROCHESTER APP CON * 119.8 251.125	ROCHESTER TOWER * 118.3 (CTAF) 257.8	GND CON 121.9	UNICOM 122.95
----------------------	---	--	-------------------------	-------------------------



4 NM Holding Pattern		NIDLE	LERPE	JORTU 1.8 NM to RW03	3400	BOCAG
6000 ← 207°	3600 → 027°	027°	3000	0.9 NM to RW03	↑	⬠
GP 3.00° TCH 47		3000	1920	0.9 NM to RW03		
		7.1 NM	3.4 NM	0.9	0.9	
CATEGORY	A	B	C	D		
LPV DA		1567-1	250 (300-1)			
LNAV/VNAV DA		1592-1	275 (300-1)			
LNAV MDA		1660-1	343 (400-1)			
CIRCLING	1720-1 403 (500-1)	1780-1 463 (500-1)	1900-1½ 583 (600-1½)	1900-2 583 (600-2)		



ROCHESTER, MINNESOTA
Amdt 3E 20APR23

43°54'N-92°30'W

RNAV (GPS) RWY 3

ROCHESTER INTL (RST)

NC-1, 30 OCT 2025 to 27 NOV 2025

NC-1, 30 OCT 2025 to 27 NOV 2025

ROCHESTER, MINNESOTA

AI-5041 (FAA)

25331

WAAS CH 69621 W03A	APP CRS 027°	Rwy Ldg 7300 TDZE 1317 Apt Elev 1317
--	------------------------	---

RNAV (GPS) RWY 3

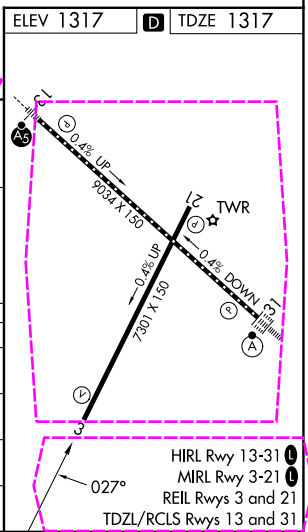
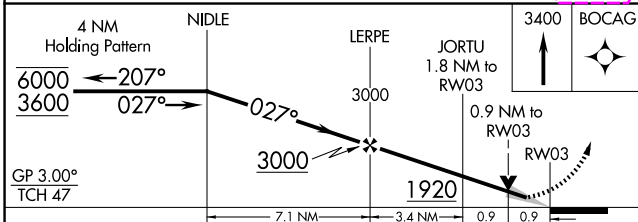
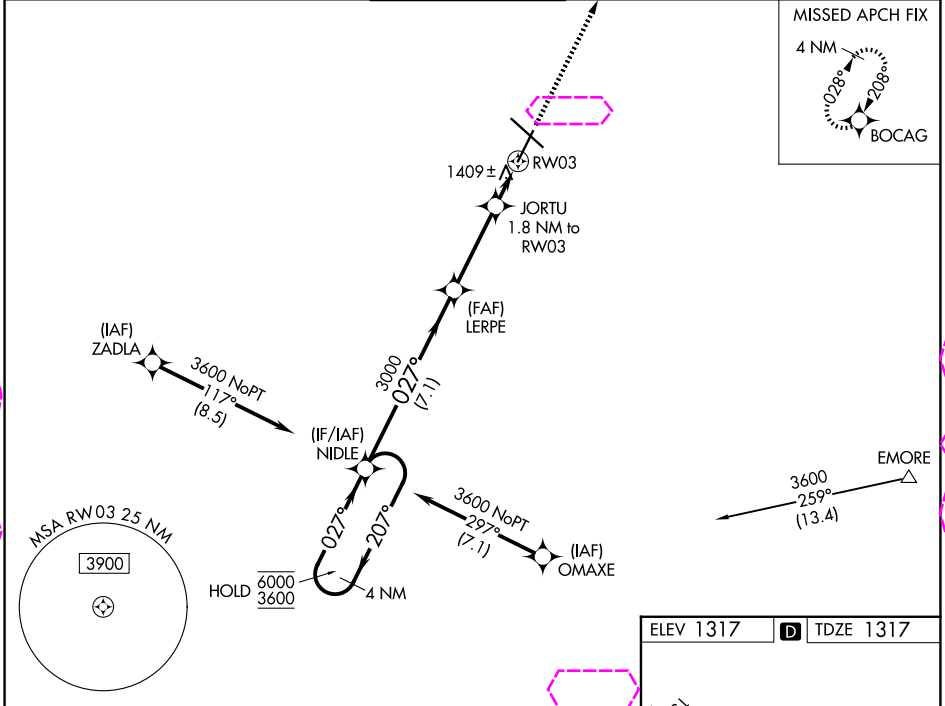
ROCHESTER INTL (RST)

RNP APCH - GPS.

For uncompensated Baro-VNAV systems, LNAV/VNAV NA below -28°C or above 54°C.

MISSED APPROACH: Climb to 3400 direct BOCAG and hold, continue climb-in-hold to 4800.

ATIS 120.5	ROCHESTER APP CON * 119.8 251.125	ROCHESTER TOWER * 118.3 (CTAF) 257.8	GND CON 121.9	UNICOM 122.95
----------------------	---	--	-------------------------	-------------------------



CATEGORY	A	B	C	D
LPV DA		1567-1	250 (300-1)	
LNAV/VNAV DA		1592-1	275 (300-1)	
LNAV MDA		1660-1	343 (400-1)	
CIRCLING	1720-1 403 (500-1)	1780-1 463 (500-1)	1900-1½ 583 (600-1½)	1900-2 583 (600-2)

ROCHESTER, MINNESOTA
Amdt 3E 20APR23

43°54'N-92°30'W

RNAV (GPS) RWY 3

ROCHESTER INTL (RST)

NC-1, 27 NOV 2025 to 25 DEC 2025

NC-1, 27 NOV 2025 to 25 DEC 2025