

ROCHESTER, MINNESOTA

AL-5041 (FAA)

24193

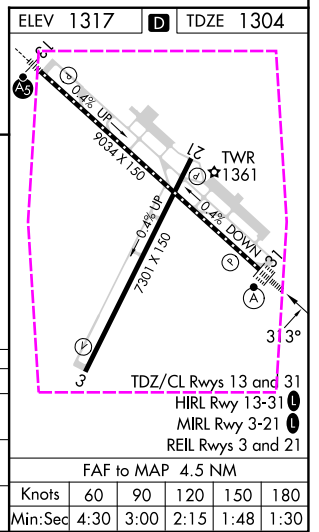
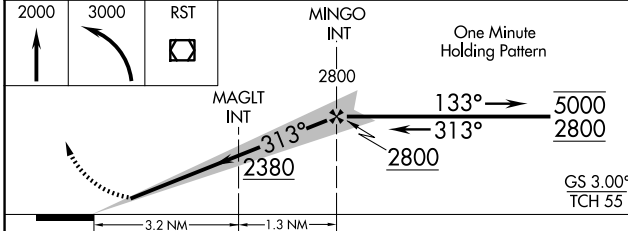
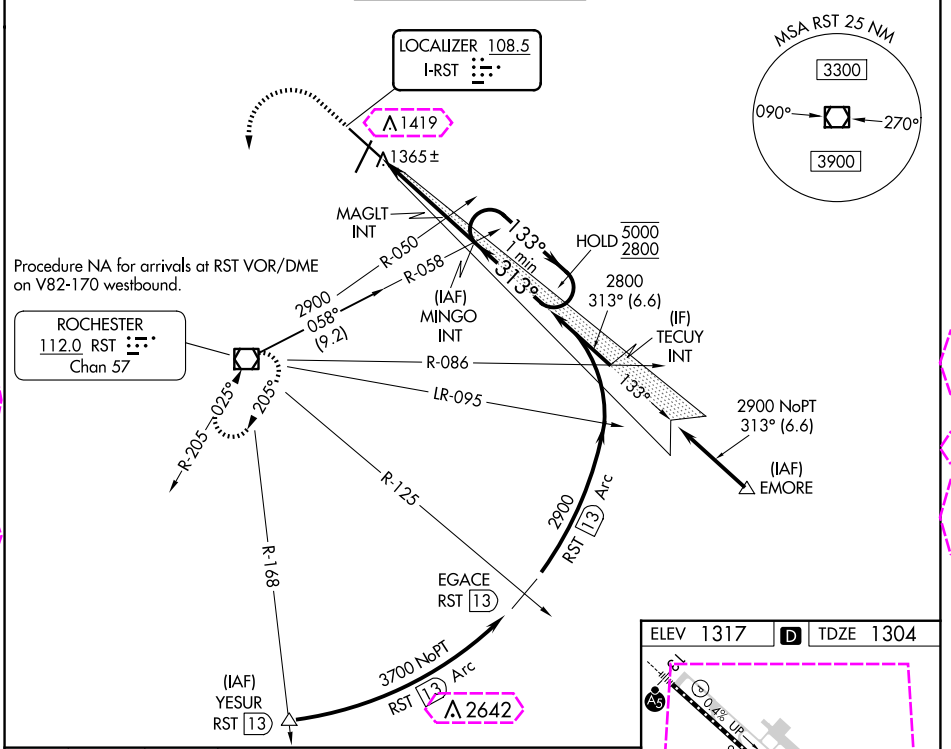
LOC I-RST <b>108.5</b>	APP CRS <b>313°</b>	Rwy ldg <b>9033</b> TDZE <b>1304</b> Apt Elev <b>1317</b>
---------------------------	------------------------	---

# ILS Z or LOC Z RWY 31

ROCHESTER INTL (RST)

DME required for procedure entry at YESUR.		ALSIF-2	MISSED APPROACH: Climb to 2000 then climbing left turn to 3000 direct RST VOR/DME and hold.
ASR	For inop ALS, increase S-LOC 31 Cat C/D visibility to RVR 4500.		

ATIS <b>120.5</b>	ROCHESTER APP CON* <b>119.8 251.125</b>	ROCHESTER TOWER* <b>118.3 (CTAF) 257.8</b>	GND CON <b>121.9</b>	UNICOM <b>122.95</b>
----------------------	--	---	-------------------------	-------------------------



CATEGORY	A	B	C	D
S-ILS 31		1504/18	200 (200-½)	
S-LOC 31		1620/24	316 (400-½)	
<b>CIRCLING</b>	1720-1 403 (500-1)	1780-1 463 (500-1)	1900-1½ 583 (600-½)	1900-2 583 (600-2)

ROCHESTER, MINNESOTA  
Amdt 24 11JUL24

43°54'N-92°30'W

# ROCHESTER INTL (RST)

# ILS Z or LOC Z RWY 31

NC-1, 30 OCT 2025 to 27 NOV 2025

NC-1, 30 OCT 2025 to 27 NOV 2025

