

ROCHESTER, MINNESOTA

AL-5041 (FAA)

24193

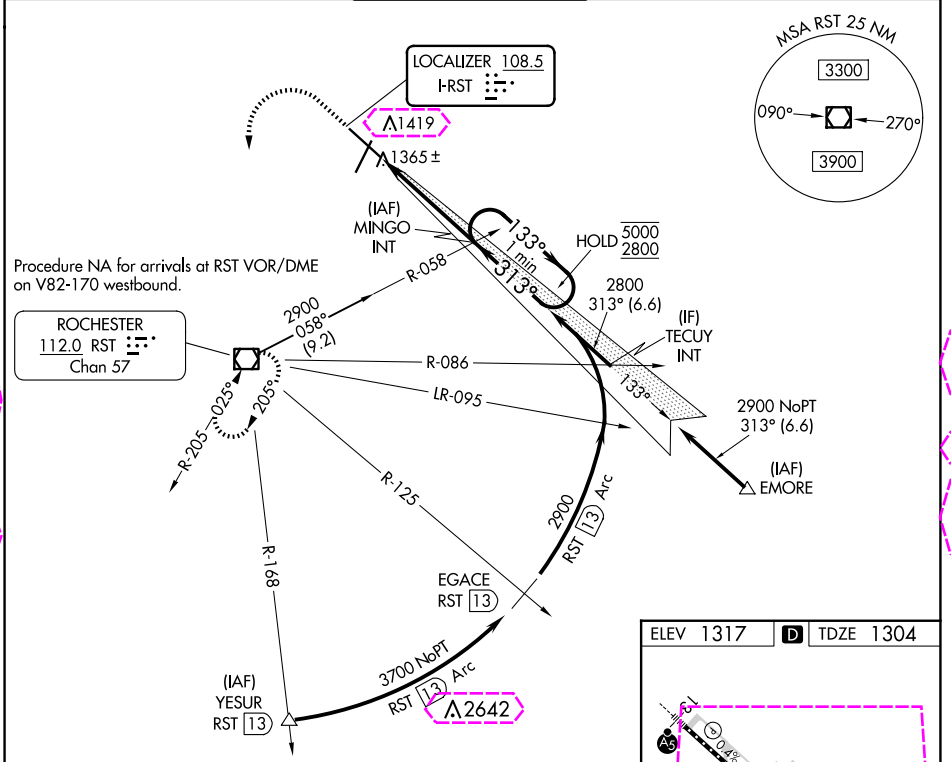
LOC I-RST 108.5	APP CRS 313°	Rwy Idg 9033 TDZE 1304 Apt Elev 1317
---------------------------	------------------------	---

ILS Z RWY 31 (SA CAT I)

ROCHESTER INTL (RST)

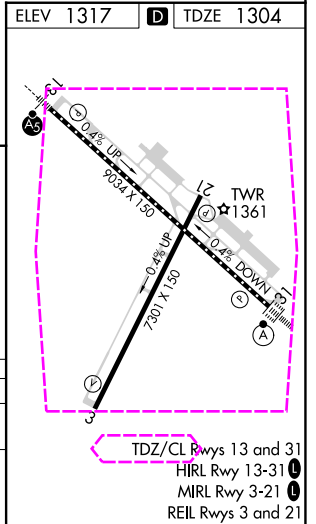
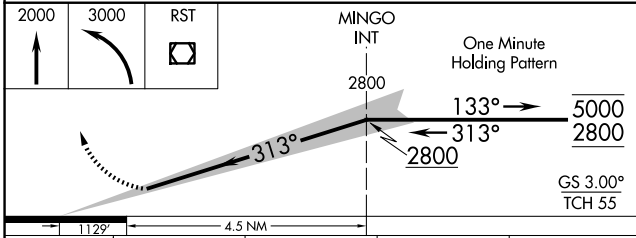
DME required for procedure entry at YESUR.		ALSf-2	MISSED APPROACH: Climb to 2000 then climbing left turn to 3000 direct RST VOR/DME and hold.	
ASR Requires specific OPSPEC, MSPEC, or LOA approval and use of HUD to DH. Procedure NA when tower closed.				

ATIS 120.5	ROCHESTER APP CON* 119.8 251.125	ROCHESTER TOWER* 118.3 (CTAF) 257.8	GND CON 121.9	UNICOM 122.95
----------------------	--	---	-------------------------	-------------------------



NC-1, 30 OCT 2025 to 27 NOV 2025

NC-1, 30 OCT 2025 to 27 NOV 2025



CATEGORY	A	B	C	D
S-ILS 31	RA 204/14 150 DA 1454			

SA CATEGORY I ILS - SPECIAL AIRCREW & AIRCRAFT CERTIFICATION REQUIRED

ROCHESTER, MINNESOTA
Amdt 24 11JUL24

43°54'N-92°30'W

ROCHESTER INTL (RST)
ILS Z RWY 31 (SA CAT I)

ROCHESTER, MINNESOTA

AL-5041 (FAA)

25331

LOC I-RST 108.5	APP CRS 313°	Rwy Ldg TDZE Apt Elev	9033 1304 1317
---------------------------	------------------------	-----------------------------	---

ILS Z RWY 31 (SA CAT I)

ROCHESTER INTL (RST)

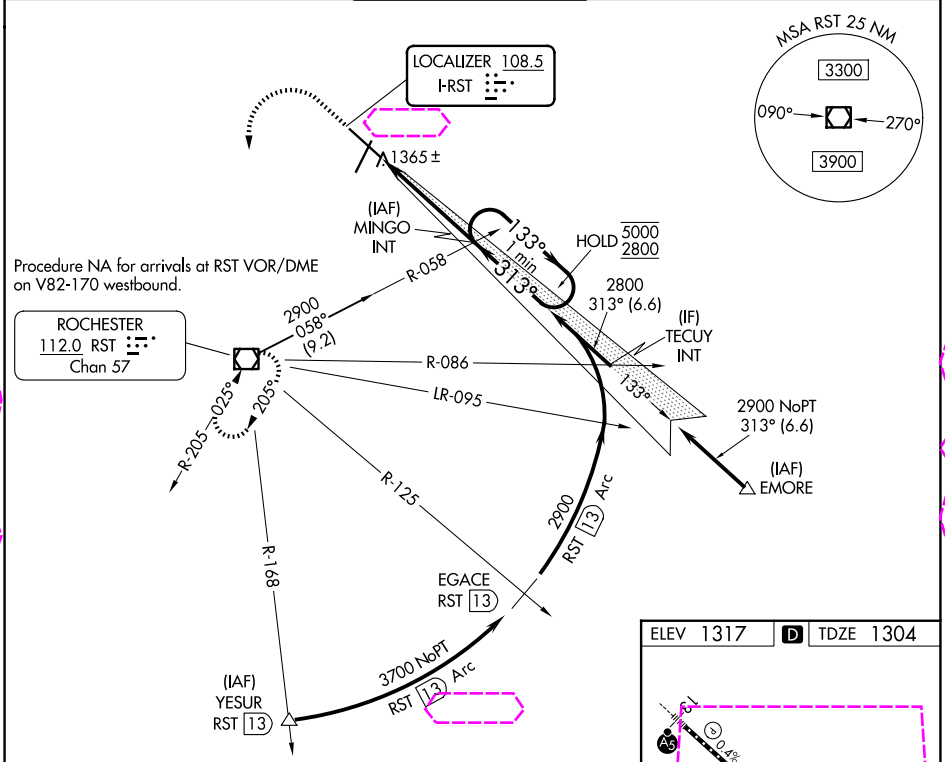
DME required for procedure entry at YESUR.

Requires specific OPSPEC, MSPEC, or LOA approval and use of HUD to DH. Procedure NA when tower closed.

ALSf-2

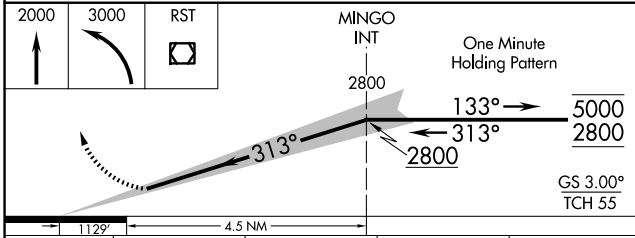
MISSED APPROACH: Climb to 2000 then climbing left turn to 3000 direct RST VOR/DME and hold.

ATIS 120.5	ROCHESTER APP CON* 119.8 251.125	ROCHESTER TOWER* 118.3 (CTAF) 257.8	GND CON 121.9	UNICOM 122.95
----------------------	--	---	-------------------------	-------------------------

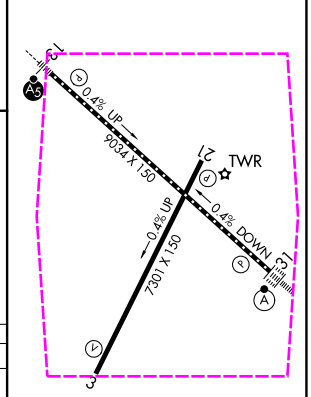


NC-1, 27 NOV 2025 to 25 DEC 2025

NC-1, 27 NOV 2025 to 25 DEC 2025



ELEV 1317	D	TDZE 1304
-----------	---	-----------



CATEGORY	A	B	C	D
S-ILS 31	RA 204/14 150 DA 1454			

SA CATEGORY I ILS - SPECIAL AIRCREW & AIRCRAFT CERTIFICATION REQUIRED

ROCHESTER, MINNESOTA
Amdt 24 11JUL24

43°54'N-92°30'W

ROCHESTER INTL (RST)
ILS Z RWY 31 (SA CAT I)