

ROCHESTER, MINNESOTA

AL-5041 (FAA)

24193

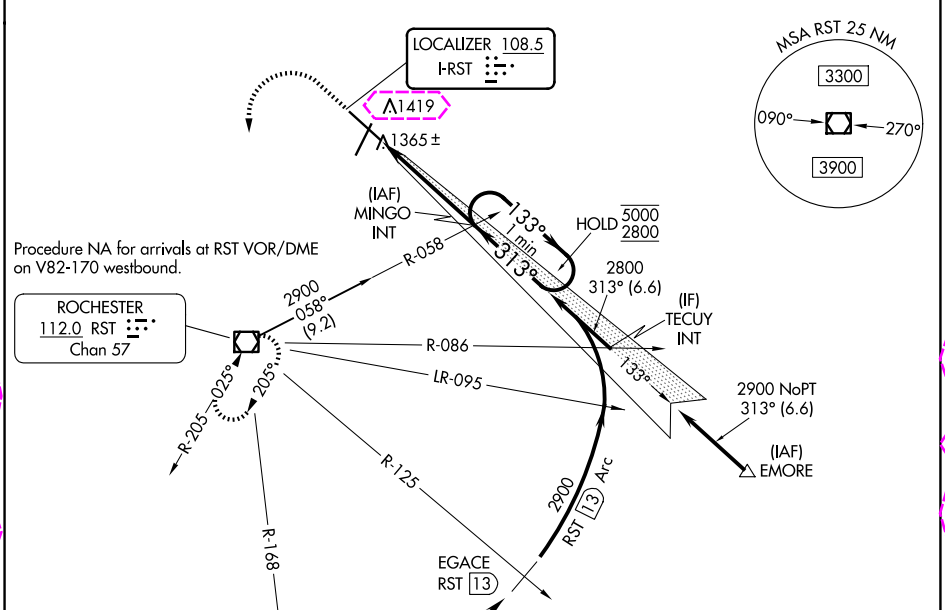
LOC I-RST 108.5	APP CRS 313°	Rwy ldg 9033
		TDZE 1304
		Apt Elev 1317

ILS Z RWY 31 (CAT II)

ROCHESTER INTL (RST)

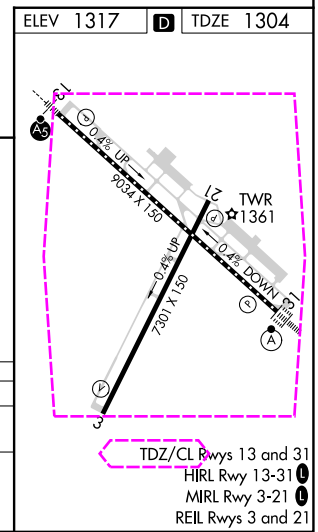
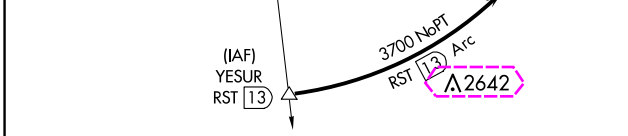
DME required for procedure entry at YESUR.		ALSIF-2	MISSED APPROACH: Climb to 2000 then climbing left turn to 3000 direct RST VOR/DME and hold.
ASR	Procedure NA when tower closed.		

ATIS 120.5	ROCHESTER APP CON* 119.8 251.125	ROCHESTER TOWER* 118.3 (CTAF) 257.8	GND CON 121.9	UNICOM 122.95
----------------------	--	---	-------------------------	-------------------------



NC-1, 30 OCT 2025 to 27 NOV 2025

NC-1, 30 OCT 2025 to 27 NOV 2025



2000	3000	RST
↑	↶	

CATEGORY	A	B	C	D
S-ILS 31	RA 104/12 100 DA 1404			

CATEGORY II ILS - SPECIAL AIRCREW & AIRCRAFT CERTIFICATION REQUIRED

ROCHESTER, MINNESOTA
Amdt 24 11JUL24

43°54'N-92°30'W

ROCHESTER INTL (RST)
ILS Z RWY 31 (CAT II)

ROCHESTER, MINNESOTA

AL-5041 (FAA)

25331

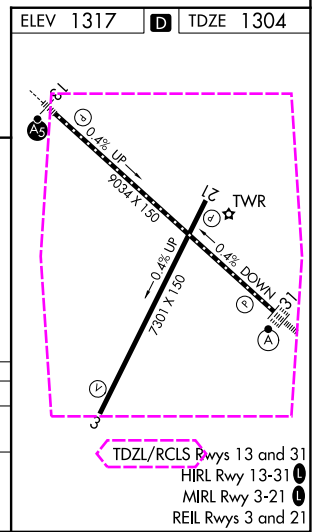
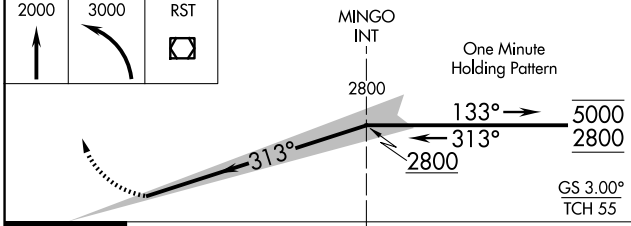
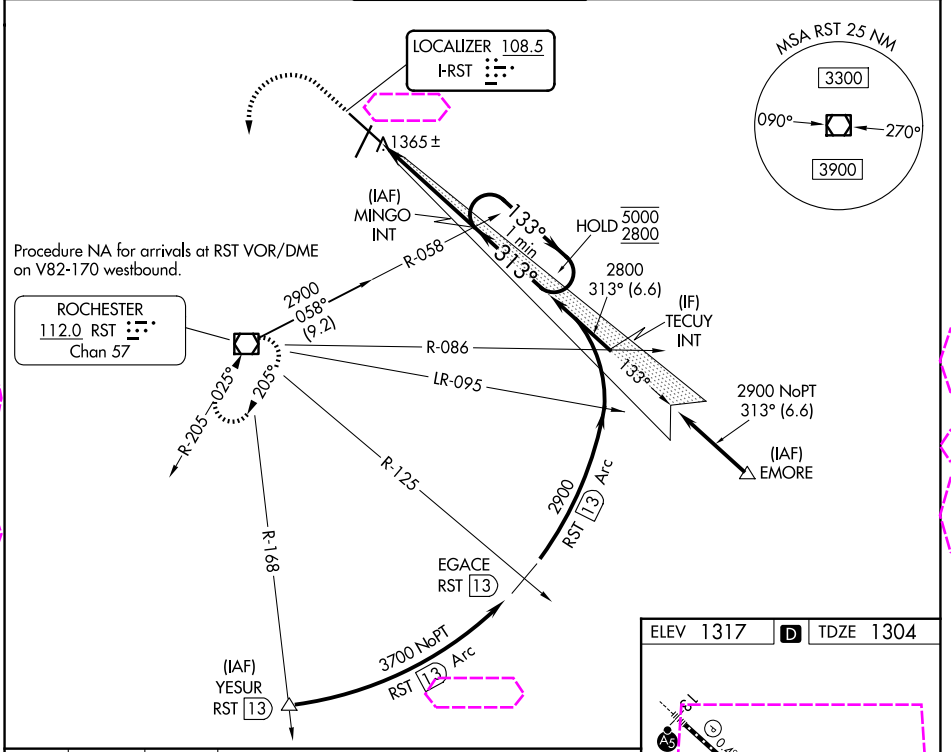
LOC I-RST 108.5	APP CRS 313°	Rwy Ldg 9033	TDZE 1304
		Apt Elev 1317	

ILS Z RWY 31 (CAT II)

ROCHESTER INTL (RST)

DME required for procedure entry at YESUR.		ALSIF-2 	MISSED APPROACH: Climb to 2000 then climbing left turn to 3000 direct RST VOR/DME and hold.
Procedure NA when tower closed.			

ATIS 120.5	ROCHESTER APP CON* 119.8 251.125	ROCHESTER TOWER* 118.3 (CTAF) 257.8	GND CON 121.9	UNICOM 122.95
----------------------	--	---	-------------------------	-------------------------



CATEGORY	A	B	C	D
S-ILS 31	RA 104/12 100 DA 1404			
CATEGORY II ILS - SPECIAL AIRCREW & AIRCRAFT CERTIFICATION REQUIRED				

ROCHESTER, MINNESOTA
Amdt 24 11JUL24

43°54'N-92°30'W

ROCHESTER INTL (RST)
ILS Z RWY 31 (CAT II)

NC-1, 27 NOV 2025 to 25 DEC 2025

NC-1, 27 NOV 2025 to 25 DEC 2025