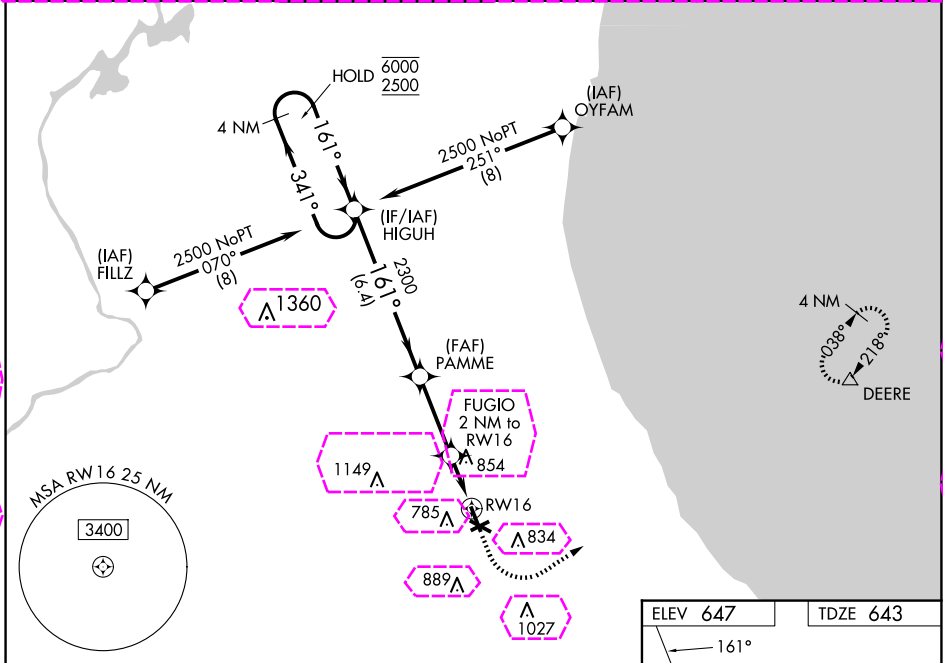


WAAS CH <b>45627</b> <b>W16A</b>	APP CRS <b>161°</b>	Rwy Idg TDZE Apt Elev	<b>5001</b> <b>643</b> <b>647</b>
--	------------------------	-----------------------------	---

# RNAV (GPS) RWY 16

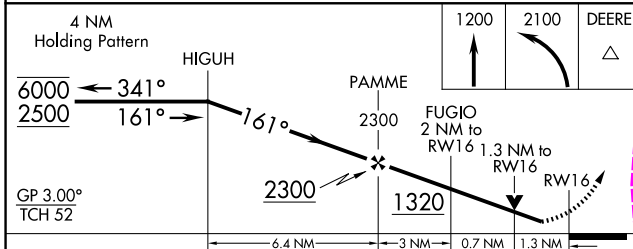
CHICAGO EXEC (PWK)

RNP APCH - GPS		<p><b>⚠</b> Circling Rwy 6, 12, 24, 30 NA at night. Rwy 16 helicopter visibility reduction below ¾ SM NA. For uncompensated Baro-VNAV systems, LNAV/VNAV NA below -19°C or above 54°C.</p>		<p>MISSED APPROACH: Climb to 1200 then climbing left turn to 2100 direct DEERE and hold.</p>		
ATIS <b>124.2</b>	CHICAGO APP CON <b>120.55 306.925</b>	EXECUTIVE TOWER ★ <b>119.9 (CTAF) 0</b>	GND CON <b>121.7</b>	CLNC DEL <b>124.7</b>	CLNC DEL <b>124.7</b> (When twr closed)	UNICOM <b>122.95</b>

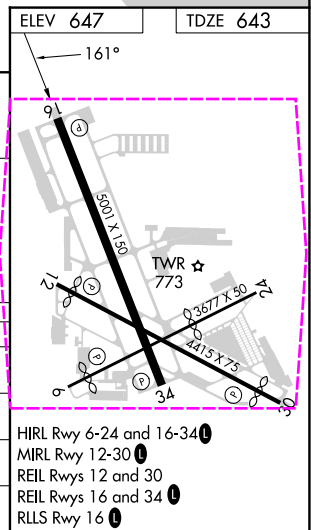


EC-3, 30 OCT 2025 to 27 NOV 2025

EC-3, 30 OCT 2025 to 27 NOV 2025



CATEGORY	A	B	C	D
LPV DA		927-7/8	284 (300-7/8)	
LNAV/VNAV DA		1083-1¼	440 (500-1¼)	
LNAV MDA	1120-1	477 (500-1)	1120-1¾	477 (500-1¾)
<b>C</b> CIRCLING	1140-1 493 (500-1)	1160-1 513 (600-1)	1200-1½ 553 (600-1½)	1460-2¾ 813 (900-2¾)

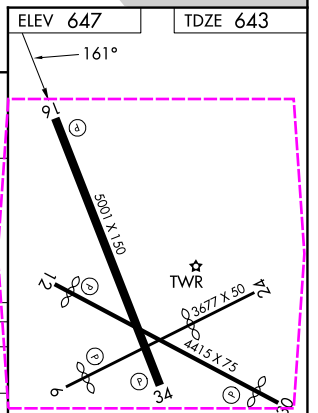
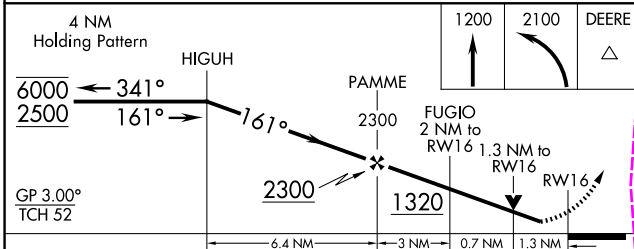
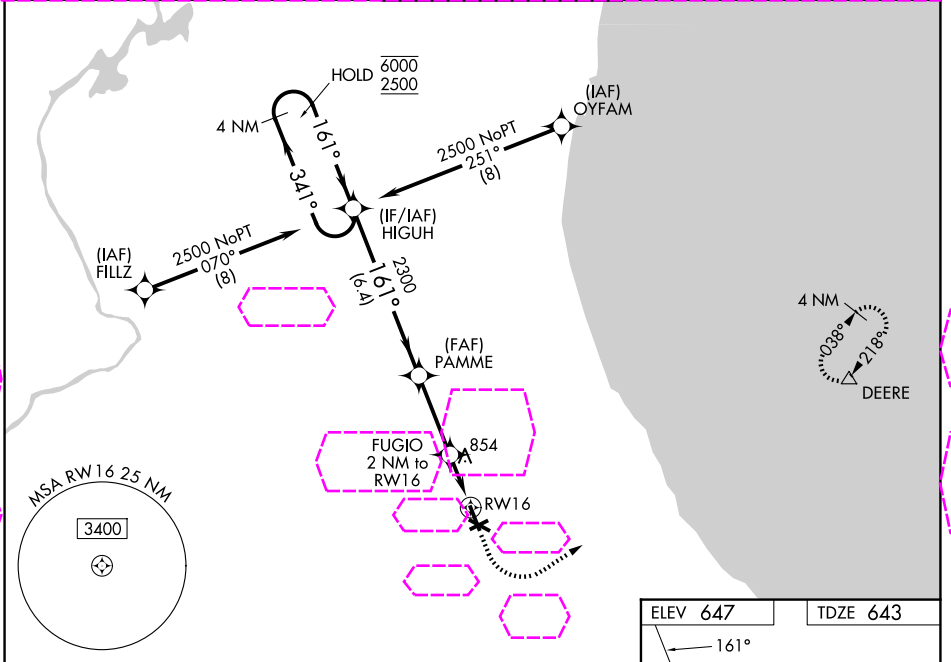


WAAS CH <b>45627</b> <b>W16A</b>	APP CRS <b>161°</b>	Rwy Ldg TDZE Apt Elev	<b>5001</b> <b>643</b> <b>647</b>
--	------------------------	-----------------------------	---

# RNAV (GPS) RWY 16

CHICAGO EXEC (PWK)

RNP APCH - GPS		<p><b>⚠</b> Circling Rwy 6, 12, 24, 30 NA at night.                  Rwy 16 helicopter visibility reduction below 3/4 SM NA.                  For uncompensated Baro-VNAV systems, LNAV/VNAV NA below -19°C or above 54°C.</p>		MISSED APPROACH: Climb to 1200 then climbing left turn to 2100 direct DEERE and hold.	
ATIS <b>124.2</b>	CHICAGO APP CON <b>120.55 306.925</b>	EXECUTIVE TOWER ★ <b>119.9 (CTAF) 0</b>	GND CON <b>121.7</b>	UNICOM <b>122.95</b>	



CATEGORY	A	B	C	D
LPV DA		927-7/8	284 (300-7/8)	
LNAV/VNAV DA		1083-1 1/4	440 (500-1 1/4)	
LNAV MDA	1120-1	477 (500-1)	1120-1 3/8	477 (500-1 3/8)
<b>CIRCLING</b>	1140-1 493 (500-1)	1160-1 513 (600-1)	1200-1 1/2 553 (600-1 1/2)	1460-2 3/4 813 (900-2 3/4)

- HIRL Rwy 6-24 and 16-34 **0**
- MIRL Rwy 12-30 **0**
- REL Rws 12 and 30
- REL Rws 16 and 34 **0**
- RLS Rwy 16 **0**

EC-3, 127 NOV 2025 to 25 DEC 2025

EC-3, 27 NOV 2025 to 25 DEC 2025