

LOC/DME I-PWK 109.75 Chan 34 (Y)	APP CRS 161°	Rwy Idg 5001 TDZE 643 Apt Elev 647
--	------------------------	--

ILS or LOC RWY 16

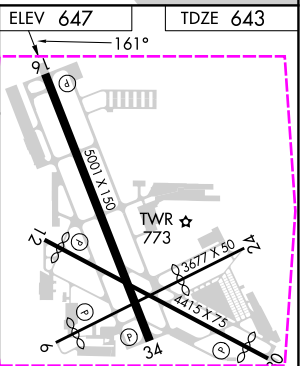
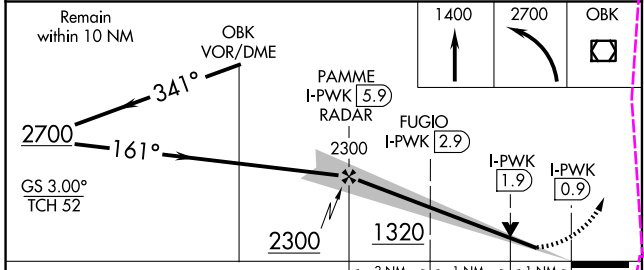
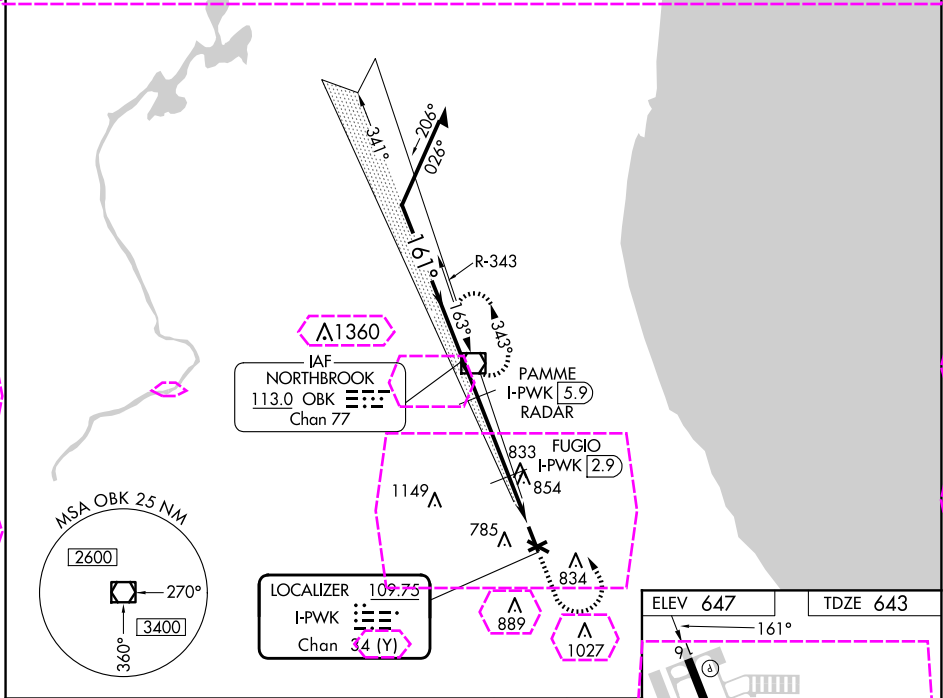
CHICAGO EXEC (PWK)

DME required.

⚠ Circling Rwy 6, 12, 24, 30 NA at night.
Rwy 16 helicopter visibility reduction below ¾ SM NA.

MISSED APPROACH: Climb to 1400 then climbing left turn to 2700 direct OBK VOR/DME and hold, continue climb-in-hold to 2700.

ATIS 124.2	CHICAGO APP CON 120.55 306.925	EXECUTIVE TOWER ★ 119.9 (CTAF) 0	GND CON 121.7	CLNC DEL 124.7	CLNC DEL 124.7 (When twr closed)	UNICOM 122.95
----------------------	--	---	-------------------------	--------------------------	---	-------------------------



CATEGORY	A	B	C	D
S-ILS 16		927-7/8	284 (300-7/8)	
S-LOC 16		1020-1	377 (400-1)	
CIRCLING	1140-1 493 (500-1)	1160-1 513 (600-1)	1200-1½ 553 (600-2)	1460-2¾ 813 (900-2¾)

HIRL Rwy 6-24 and 16-34 0	MIRL Rwy 12-30 0	REIL Rwy 12 and 30 0	REIL Rwy 16 and 34 0	RLLS Rwy 16 0	
FAF to MAP 5 NM					
Knots	60	90	120	150	180
Min:Sec	5:00	3:20	2:30	2:00	1:40

EC-3, 30 OCT 2025 to 27 NOV 2025

EC-3, 30 OCT 2025 to 27 NOV 2025

LOC/DME I-PWK 109.75 Chan 34 (Y)	APP CRS 161°	Rwy Ldg TDZE Apt Elev 5001 643 647
--	------------------------	--

ILS or LOC RWY 16

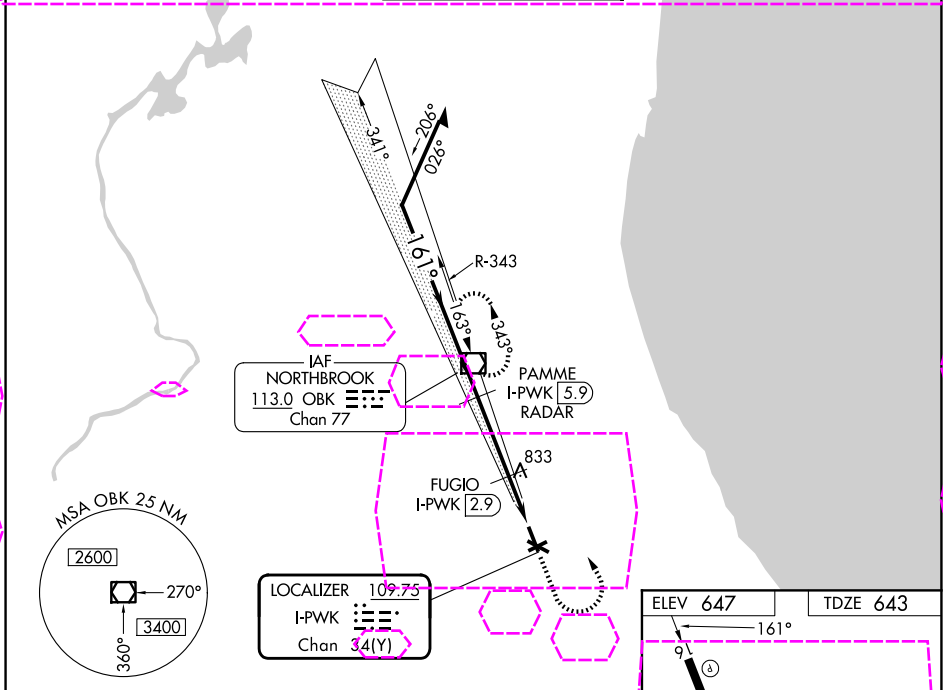
CHICAGO EXEC (PWK)

DME required.

⚠ Circling Rwy 6, 12, 24, 30 NA at night.
Rwy 16 helicopter visibility reduction below $\frac{3}{4}$ SM NA.

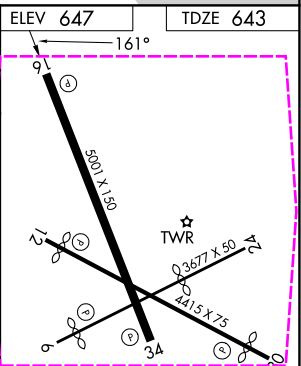
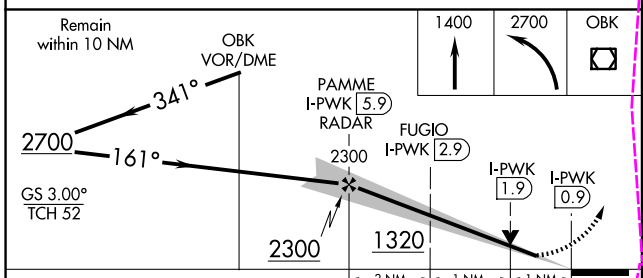
MISSED APPROACH: Climb to 1400 then climbing left turn to 2700 direct OBK VOR/DME and hold, continue climb-in-hold to 2700.

ATIS 124.2	CHICAGO APP CON 120.55 306.925	EXECUTIVE TOWER ★ 119.9 (CTAF) 0	GND CON 121.7	UNICOM 122.95
----------------------	--	---	-------------------------	-------------------------



EC-3, 127 NOV 2025 to 25 DEC 2025

EC-3, 27 NOV 2025 to 25 DEC 2025



	3 NM			1 NM		1 NM	
CATEGORY	A	B	C	D			
S-ILS 16		927- $\frac{7}{8}$	284 (300- $\frac{7}{8}$)				
S-LOC 16		1020-1	377 (400-1)				
CIRCLING	1140-1 493 (500-1)	1160-1 513 (600-1)	1200-1 $\frac{1}{2}$ 553 (600-2)	1460-2 $\frac{3}{4}$ 813 (900-2 $\frac{3}{4}$)			

HIRL Rwy 6-24 and 16-34 0					
MIRL Rwy 12-30 0					
REIL Rwys 12 and 30 0					
REIL Rwys 16 and 34 0					
RLS Rwy 16 0					
FAF to MAP 5 NM					
Knots	60	90	120	150	180
Min:Sec	5:00	3:20	2:30	2:00	1:40