

(GTLKE4.GTLKE) 23278

AL-5027 (FAA)

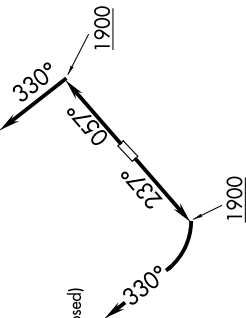
CUYAHOGA COUNTY (CGF)

CLEVELAND, OHIO

GTLKE FOUR DEPARTURE (RNAV)

EC-2, 30 OCT 2025 to 27 NOV 2025

D-ATIS 119.95
 CLNC DEL 121.85 (when tower closed)
 GND CON 121.85
 COUNTY TOWER * 118.5 (CTAF)
 CLEVELAND DEP CON 125.35 346.325



**TOP ALTITUDE:
ASSIGNED BY ATC**

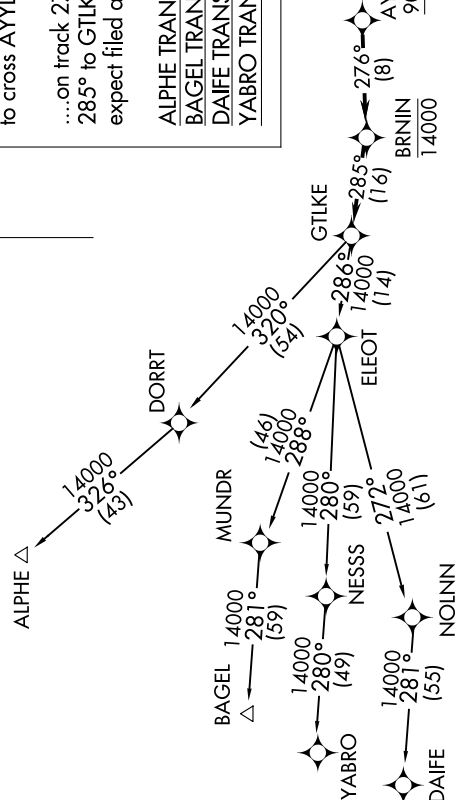
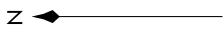
TAKEOFF MINIMUMS:
 Rwy 6, 24: Standard with a minimum climb of 500' per NM to 1400.

DEPARTURE ROUTE DESCRIPTION

TAKEOFF RUNWAY 6: Climb on heading 057° to 1900, then on heading 330° or as assigned by ATC for RADAR vectors to cross AYLEE at or above 9000, thence....
TAKEOFF RUNWAY 24: Climb on heading 237° to 1900, then right turn heading 330° or as assigned by ATC for RADAR vectors to cross AYLEE at or above 9000, thence....
on track 276° to cross BRNIN at or below 14000, then on track 285° to GTLKE then on (transition). Maintain ATC assigned altitude, expect filed altitude 10 minutes after departure.

ALPHE TRANSITION (GTLKE4.ALPHE)
BAGEL TRANSITION (GTLKE4.BAGEL)
DAIFE TRANSITION (GTLKE4.DAIFE)
YABRO TRANSITION (GTLKE4.YABRO)

NOTE: RADAR required.
NOTE: RNAV 1.
NOTE: DME/DME/IRU or GPS required.
NOTE: BAGEL TRANSITION: For aircraft landing MDW only, or as assigned by ATC.
NOTE: DAIFE TRANSITION: For aircraft landing ORD only, or as assigned by ATC.



NOTE: Chart not to scale.

EC-2, 30 OCT 2025 to 27 NOV 2025

GTLKE FOUR DEPARTURE (RNAV)

(GTLKE4.GTLKE) 26MAR20

CLEVELAND, OHIO
CUYAHOGA COUNTY (CGF)

(GTLKE5.GTLKE) 25331

AL-5027 (FAA)

CUYAHOGA COUNTY (CGF)

CLEVELAND, OHIO

GTLKE FIVE DEPARTURE (RNAV)

EC-2, 27 NOV 2025 to 25 DEC 2025

**TOP ALTITUDE:
ASSIGNED BY ATC**

RNAV 1 - DME/DME/IRU or GPS.
RADAR required.

CLEVELAND DEP CON
125.35 346.325
D-ATIS
119.95
CLNC DEL
121.85 (when nvr closed)
GND CON
121.85
COUNTY TOWER *
118.5 (CTAF)

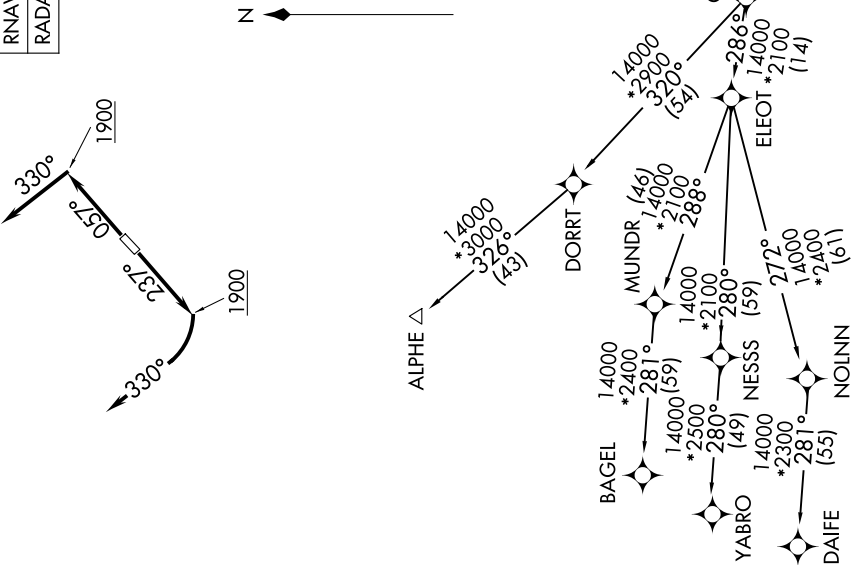
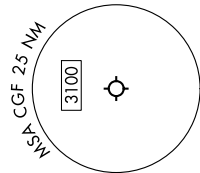
TAKEOFF MINIMUMS:
Rwys 6, 24: Standard with minimum climb
of 500' per NM to 1400.

DEPARTURE ROUTE DESCRIPTION

TAKEOFF RUNWAY 6: Climb on heading 057° to 1900, then on heading 330° or as assigned by ATC for RADAR vectors to cross AYYLE at or above 9000, thence....
TAKEOFF RUNWAY 24: Climb on heading 237° to 1900, then right turn heading 330° or as assigned by ATC for RADAR vectors to cross AYYLE at or above 9000, thence....

...on track 276° to cross BRNJN at or below 14000, then on track 285° to GTLKE then on (transition). Maintain ATC assigned altitude, expect filed altitude 10 minutes after departure.

ALPHE TRANSITION (GTLKE5.ALPHE)
BAGEL TRANSITION (GTLKE5.BAGEL)
DAIFE TRANSITION (GTLKE5.DAIFE)
YABRO TRANSITION (GTLKE5.YABRO)



NOTE: Chart not to scale.

EC-2, 27 NOV 2025 to 25 DEC 2025

GTLKE FIVE DEPARTURE (RNAV)

(GTLKE5.GTLKE) 27NOV25

CLEVELAND, OHIO

CUYAHOGA COUNTY (CGF)