

CAVVS S4 CAVVS 23278

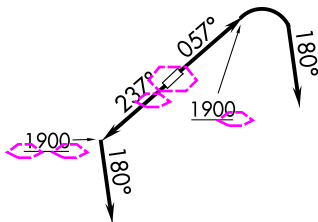
AL-5027 (FAA)

CUYAHOGA COUNTY (CGF)
CLEVELAND, OHIO

CAVVS FOUR DEPARTURE (RNAV)

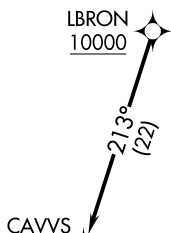
D-ATIS
 119.95
 CLNC DEL
 121.85 (when tower closed)
 GND CON
 121.85
 COUNTY TOWER *
 118.5 (CTAF)
 CLEVELAND DEP CON
 125.35 346.325

**TOP ALTITUDE:
 ASSIGNED BY ATC**



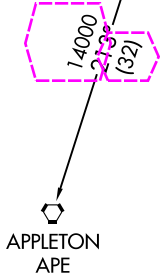
EC-2, 30 OCT 2025 to 27 NOV 2025

EC-2, 30 OCT 2025 to 27 NOV 2025



NOTE: RADAR required.
 NOTE: RNAV 1.
 NOTE: DME/DME/IRU or GPS required.

TAKEOFF MINIMUMS:
 Rws 6, 24: Standard with a minimum climb
 of 500' per NM to 1400.



DEPARTURE ROUTE DESCRIPTION

TAKEOFF RUNWAY 6: Climb on heading 057° to 1900, then right turn heading 180° or as assigned by ATC for RADAR vectors to cross LBRON at or above 10000, thence....

TAKEOFF RUNWAY 24: Climb on heading 237° to 1900, then on heading 180° or as assigned by ATC for RADAR vectors to cross LBRON at or above 10000, thence....

on track 213° to CAVVS, then on (transition)

Maintain altitude assigned by ATC, expect filed altitude ten minutes after departure.

APPLETON TRANSITION (CAVVS S4 APE)

NOTE: Chart not to scale.

CAVVS FOUR DEPARTURE (RNAV)

CAVVS S4 CAVVS 26MAR20

CLEVELAND, OHIO
CUYAHOGA COUNTY (CGF)

(CAVVS5, CAVVS) 25331

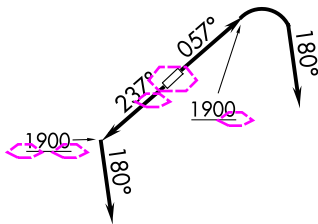
AL-5027 (FAA)

CUYAHOGA COUNTY (CGF)
CLEVELAND, OHIO

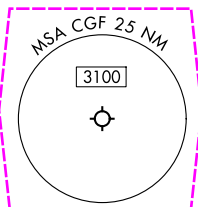
CAVVS FIVE DEPARTURE (RNAV)

CLEVELAND DEP CON
 125.35 346.325
 D-ATIS
 119.95
 CLNC DEL
 121.85 (when twr closed)
 GND CON
 121.85
 COUNTY TOWER ★
 118.5 (CTAF)

**TOP ALTITUDE:
 ASSIGNED BY ATC**

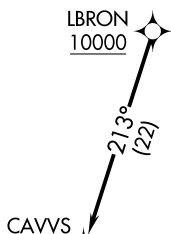


RNAV 1 - DME/DME/IRU or GPS.
 RADAR required.

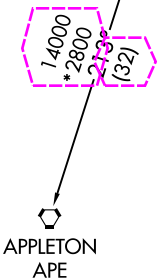


EC-2, 27 NOV 2025 to 25 DEC 2025

EC-2, 27 NOV 2025 to 25 DEC 2025



TAKEOFF MINIMUMS:
 Rwy 6, 24: Standard with minimum climb
 of 500' per NM to 1400.



DEPARTURE ROUTE DESCRIPTION

TAKEOFF RUNWAY 6: Climb on heading 057° to 1900, then right turn heading 180° or as assigned by ATC for RADAR vectors to cross LBRON at or above 10000, thence....

TAKEOFF RUNWAY 24: Climb on heading 237° to 1900, then on heading 180° or as assigned by ATC for RADAR vectors to cross LBRON at or above 10000, thence....

on track 213° to CAVVS, then on (transition)
 Maintain ATC assigned altitude, expect filed altitude ten minutes after departure.

APPLETON TRANSITION (CAVVS5, APE)

NOTE: Chart not to scale.

CAVVS FIVE DEPARTURE (RNAV)

(CAVVS5, CAVVS) 27NOV25

CLEVELAND, OHIO
CUYAHOGA COUNTY (CGF)