

PORT ANGELES, WASHINGTON

AL-886 (FAA)

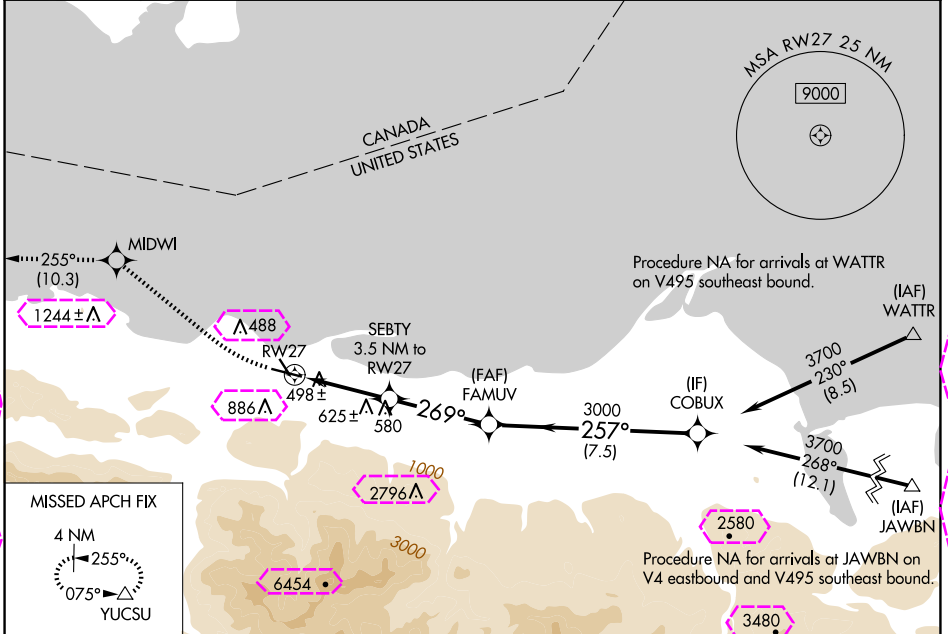
25051

| | | | |
|--|------------------------|-----------------------------|---|
| WAAS CH 90338 W27A | APP CRS 269° | Rwy Idg TDZE Apt Elev | 4993 282 291 |
|--|------------------------|-----------------------------|---|

RNAV (GPS) RWY 27

WILLIAM R FAIRCHILD INTL (CLM)

| | | | |
|--|--|--|--|
| RNP APCH - GPS. | | MISSED APPROACH: Climbing right turn to 4000 direct MIDWI and on track 255° to YUCSU and hold. | |
| <p>▼ Circling Rwy 13, 31 NA at night. ▲ Rwy 27 helicopter visibility reduction below ¼ SM NA. Circling NA south of Rwy 9-27.</p> | | ASOS 135.175 | WHIDBEY APP CON 118.2 285.65 |
| | | CLNC DEL 124.15 | UNICOM 122.975 (CTAF) 1 |



NW-1, 30 OCT 2025 to 27 NOV 2025

NW-1, 30 OCT 2025 to 27 NOV 2025

MISSED APCH FIX

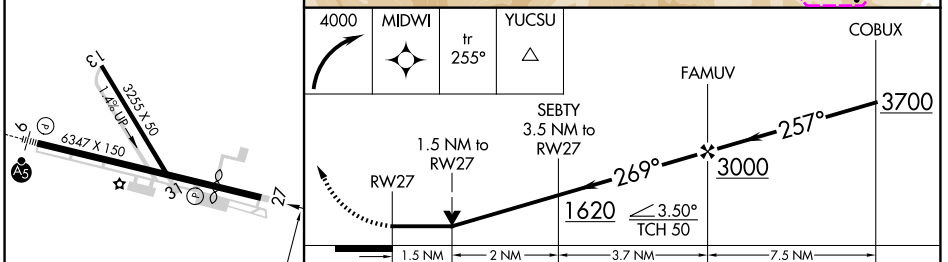
4 NM

255°

075°

YUCSU

| | |
|----------|----------|
| ELEV 291 | TDZE 282 |
|----------|----------|



| CATEGORY | A | B | C | D |
|-----------------|-------|-------------|-----------------------------------|--|
| LP MDA | 760-1 | 478 (500-1) | 760-1 ³ / ₈ | 478 (500-1 ³ / ₈) |
| LNAV MDA | 920-1 | 638 (700-1) | 920-1 ³ / ₄ | 638 (700-1 ³ / ₄) |
| CIRCLING | 920-1 | 629 (700-1) | 920-1 ³ / ₄ | 1000-2 ¹ / ₄ 709 (800-2 ¹ / ₄) |

PORT ANGELES, WASHINGTON
Amdt 1D 25JAN24

48°07'N-123°30'W

WILLIAM R FAIRCHILD INTL (CLM)

RNAV (GPS) RWY 27

PORT ANGELES, WASHINGTON

AL-886 (FAA)

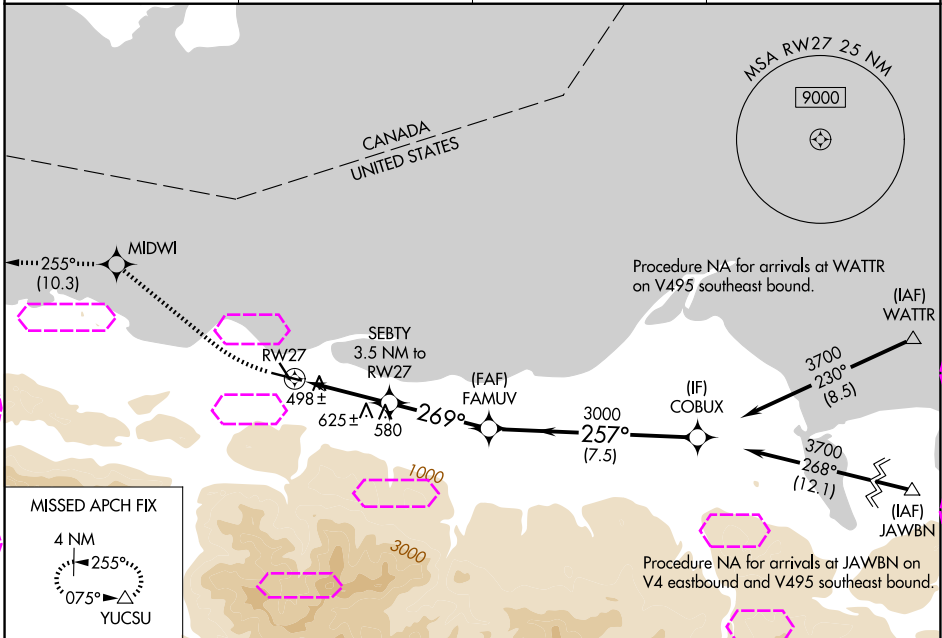
25331

| | | | |
|--|------------------------|-----------------------------|---|
| WAAS CH 90338 W27A | APP CRS 269° | Rwy Ldg TDZE Apt Elev | 4993 282 291 |
|--|------------------------|-----------------------------|---|

RNAV (GPS) RWY 27

WILLIAM R FAIRCHILD INTL (CLM)

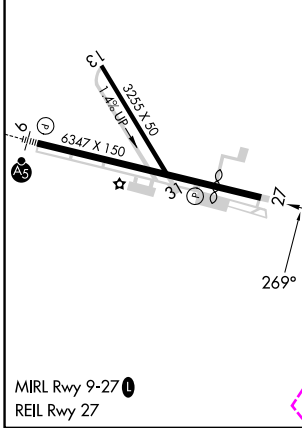
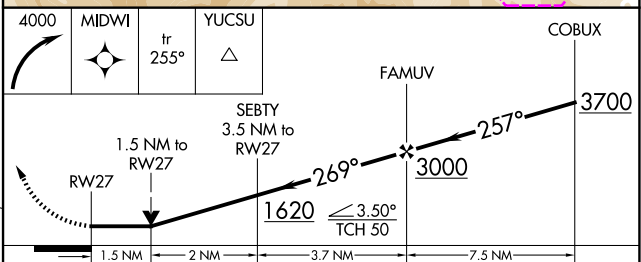
| | | | |
|--|--|--|--|
| RNP APCH - GPS. | | MISSED APPROACH: Climbing right turn to 4000 direct MIDWI and on track 255° to YUCSU and hold. | |
| <p>▼ Circling Rwy 13, 31 NA at night. ▲ Rwy 27 helicopter visibility reduction below ¼ SM NA. Circling NA south of Rwy 9-27.</p> | | ASOS 135.175 | WHIDBEY APP CON 118.2 285.65 |
| | | CLNC DEL 124.15 | UNICOM 122.975 (CTAF) 1 |



NW-1, 127 NOV 2025 to 25 DEC 2025

NW-1, 127 NOV 2025 to 25 DEC 2025

| | |
|----------|----------|
| ELEV 291 | TDZE 282 |
|----------|----------|



| CATEGORY | A | B | C | D |
|----------|-------|-------------|---|--|
| LP MDA | 760-1 | 478 (500-1) | 760-1 ³ / ₈ | 478 (500-1 ³ / ₈) |
| LNAV MDA | 920-1 | 638 (700-1) | 920-1 ³ / ₄ | 638 (700-1 ³ / ₄) |
| CIRCLING | 920-1 | 629 (700-1) | 920-1 ³ / ₄ 629 (700-1 ³ / ₄) | 1000-2 ¹ / ₄ 709 (800-2 ¹ / ₄) |

PORT ANGELES, WASHINGTON
Amdt 1D 25JAN24

48°07'N-123°30'W

WILLIAM R FAIRCHILD INTL (CLM) RNAV (GPS) RWY 27