

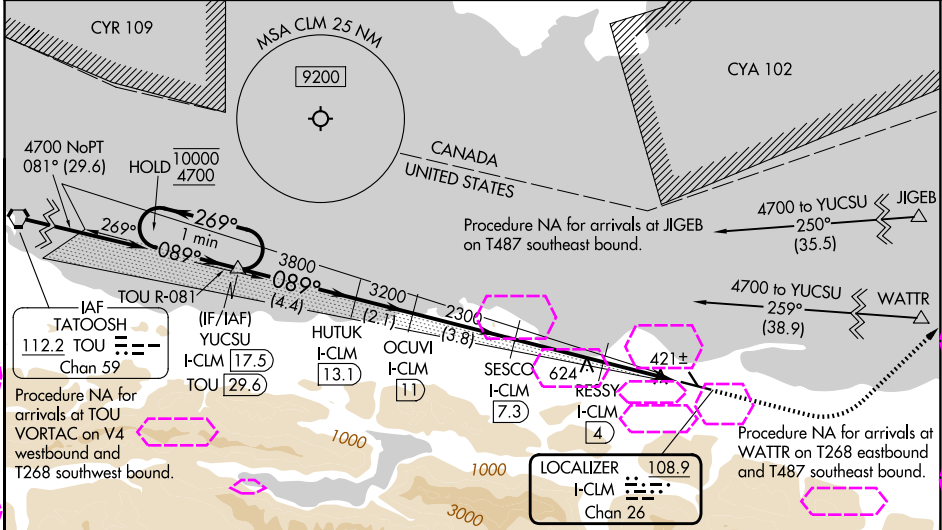
LOC/DME I-CLM 108.9 Chan 26	APP CRS 089°	Rwy Ldg TDZE 6347 285 Apt Elev 291
--	------------------------	---

ILS or LOC RWY 9

WILLIAM R FAIRCHILD INTL (CLM)

RNAV 1 - GPS. From JIGEB or WATTR.	MALSR	MISSED APPROACH: Climb to 1000 then climbing left turn to 5400 on heading 030° and CVV VOR/DME R-247 to JIGEB/CVV 12.1 DME and hold, continue climb-in-hold to 5400.
DME required.		
Circling NA south of Rwy 9-27. Circling Rwy 13, 31 NA at night. For inop ALS, increase S-ILS 9 visibility to 7/8 SM.		

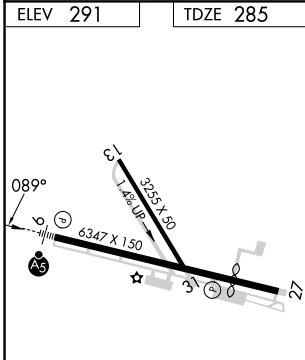
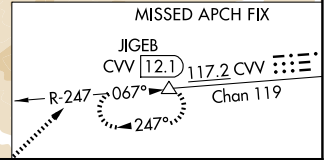
ASOS 135.175	WHIDBEY APP CON 118.2 285.65	CLNC DEL 124.15	UNICOM 122.975 (CTAF)
------------------------	--	---------------------------	---------------------------------



NW-1, 127 NOV 2025 to 25 DEC 2025

NW-1, 127 NOV 2025 to 25 DEC 2025

ELEV 291	TDZE 285
----------	----------



YUCSU I-CLM 17.5	HUTUK I-CLM 13.1	OCUVI I-CLM 11	SESCO I-CLM 7.3	RESSY I-CLM 4	RESSY I-CLM 2.3	RESSY I-CLM 1.1
10000	4700	3800	3200	2300	1260	
4.4 NM	2.1 NM	3.8 NM	3.3 NM	1.7	1.2	

MIRL Rwy 9-27	REIL Rwy 27	FAF to MAP 6.2 NM			
Knots	60	90	120	150	180
Min:Sec	6:12	4:08	3:06	2:29	2:04
CATEGORY	A	B	C	D	
S-ILS 9	495-1/2 210 (300-1/2)				
S-LOC 9	720-1/2 435 (500-1/2)		720-3/4 435 (500-3/4)		
CIRCLING	800-1 509 (600-1)		800-1 1/2 509 (600-1 1/2)		1000-2 1/4 709 (800-2 1/4)