

RAPID CITY, SOUTH DAKOTA

AL-877 (FAA)

23166

WAAS CH <b>82633</b> <b>W05A</b>	APP CRS <b>054°</b>	Rwy Idg <b>3601</b> TDZE <b>3199</b> Apt Elev <b>3204</b>
--	------------------------	---

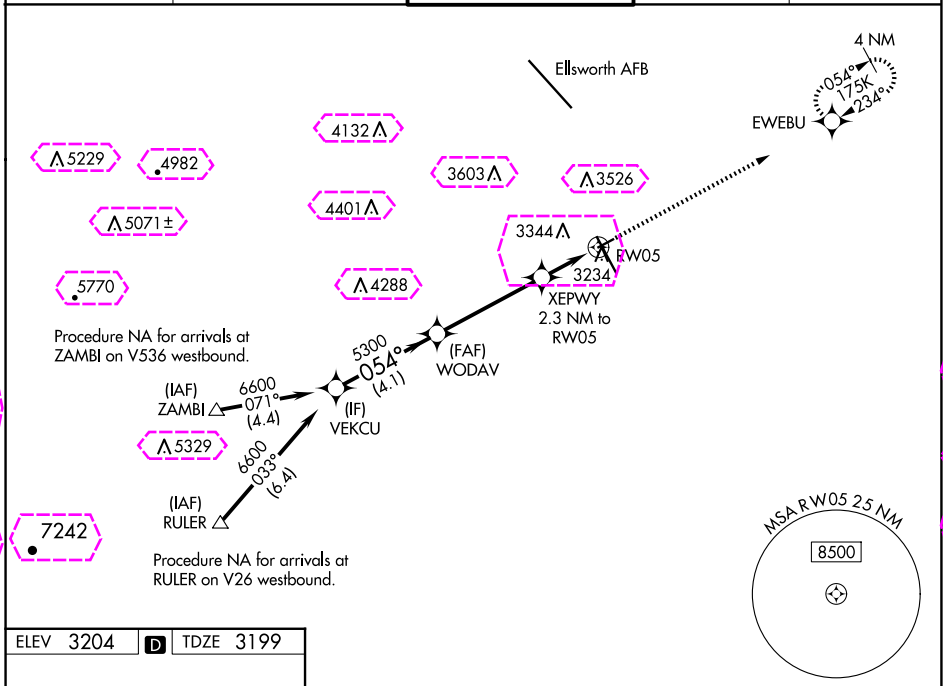
# RNAV (GPS) RWY 5

RAPID CITY RGNL (RAP)

**⚠** For uncompensated Baro-VNAV systems, LNAV/VNAV NA below -21°C (-5°F) or above 54°C (130°F). DME/DME RNP-0.3 NA. When local altimeter setting not received, use Ellsworth AFB altimeter setting and increase all DA 25 feet and all MDA 40 feet. VDP and Baro-VNAV NA with Ellsworth AFB altimeter setting.

**⚠** MISSED APPROACH: Climb to 5300 direct EWEBU and hold.

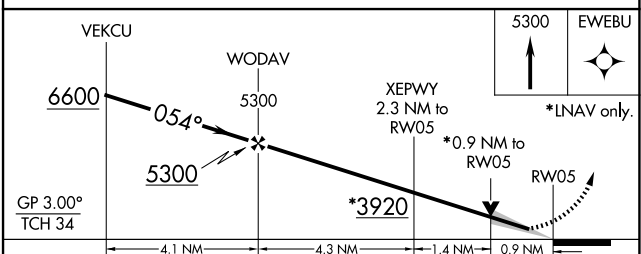
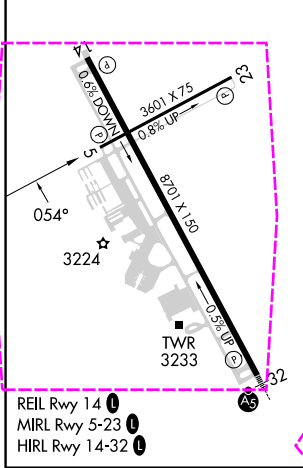
ASOS <b>118.525</b>	ELLSWORTH APP CON * <b>119.5 259.1</b>	RAPID CITY TOWER * <b>125.85 (CTAF) 0 257.8</b>	GND CON <b>121.9</b>	UNICOM <b>122.95</b>
------------------------	---	--	-------------------------	-------------------------



NC-1, 30 OCT 2025 to 27 NOV 2025

NC-1, 30 OCT 2025 to 27 NOV 2025

ELEV 3204	<b>D</b>	TDZE 3199
-----------	----------	-----------



CATEGORY	A	B	C	D
LPV DA	3449-1	250 (300-1)		NA
LNAV/VNAV DA	3449-1	250 (300-1)		NA
LNAV MDA	3500-1	301 (300-1)		NA
<b>CIRCLING</b>	3660-1 456 (500-1)	3840-1 636 (700-1)		NA

RAPID CITY, SOUTH DAKOTA  
Orig-A 05FEB15

44°03'N-103°03'W

# RNAV (GPS) RWY 5

RAPID CITY, SOUTH DAKOTA

AL-877 (FAA)

25331

WAAS CH <b>82633</b> <b>W05A</b>	APP CRS <b>054°</b>	Rwy Ldg <b>3601</b> TDZE <b>3199</b> Apt Elev <b>3204</b>
--	------------------------	---

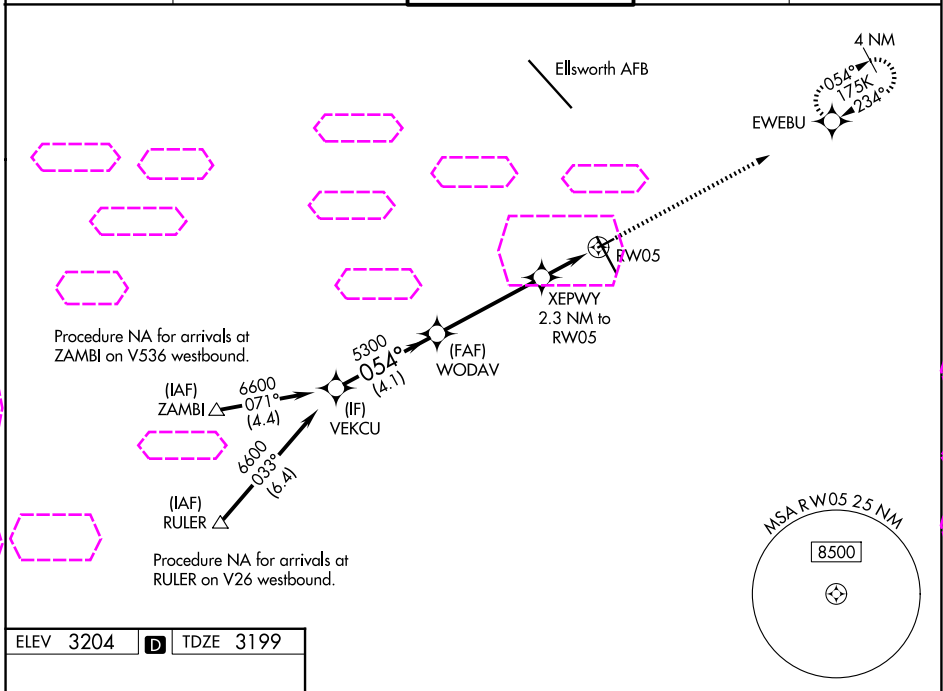
# RNAV (GPS) RWY 5

RAPID CITY RGNL (RAP)

**⚠** For uncompensated Baro-VNAV systems, LNAV/VNAV NA below -21°C (-5°F) or above 54°C (130°F). DME/DME RNP-0.3 NA. When local altimeter setting not received, use Ellsworth AFB altimeter setting and increase all DA 25 feet and all MDA 40 feet. VDP and Baro-VNAV NA with Ellsworth AFB altimeter setting.

**⚠** MISSED APPROACH: Climb to 5300 direct EWEBU and hold.

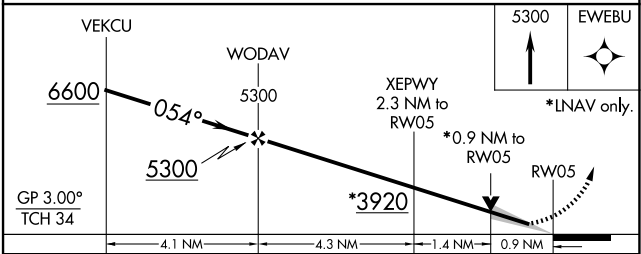
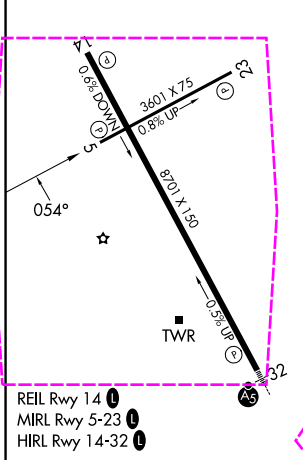
ASOS <b>118.525</b>	ELLSWORTH APP CON * <b>119.5 259.1</b>	RAPID CITY TOWER * <b>125.85 (CTAF) 0 257.8</b>	GND CON <b>121.9</b>	UNICOM <b>122.95</b>
------------------------	---	--	-------------------------	-------------------------



NC-1, 27 NOV 2025 to 25 DEC 2025

NC-1, 27 NOV 2025 to 25 DEC 2025

ELEV 3204	<b>D</b>	TDZE 3199
-----------	----------	-----------



CATEGORY	A	B	C	D
LPV DA	3449-1	250 (300-1)		NA
LNAV/VNAV DA	3449-1	250 (300-1)		NA
LNAV MDA	3500-1	301 (300-1)		NA
<b>CIRCLING</b>	3660-1 456 (500-1)	3840-1 636 (700-1)		NA

RAPID CITY, SOUTH DAKOTA

Orig-A 05FEB15

44°03'N-103°03'W

# RNAV (GPS) RWY 5

RAPID CITY RGNL (RAP)