

LOC/DME I-RAP <b>109.3</b> Chan <b>30</b>	APP CRS <b>324°</b>	Rwy Idg <b>8701</b> TDZE <b>3160</b> Apt Elev <b>3204</b>
---	------------------------	---

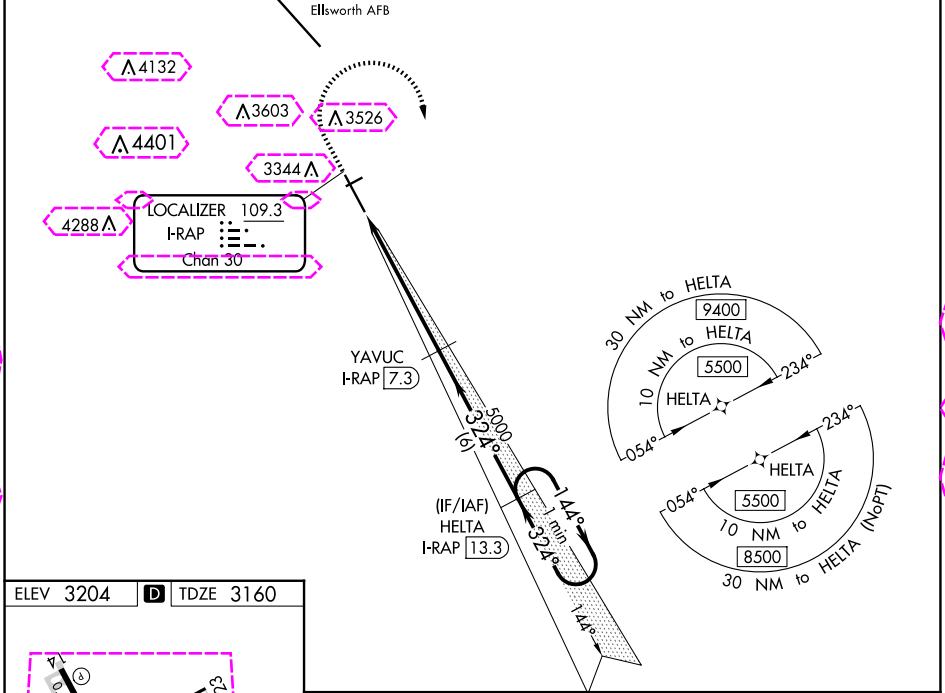
# ILS or LOC RWY 32

RAPID CITY RGNL (RAP)

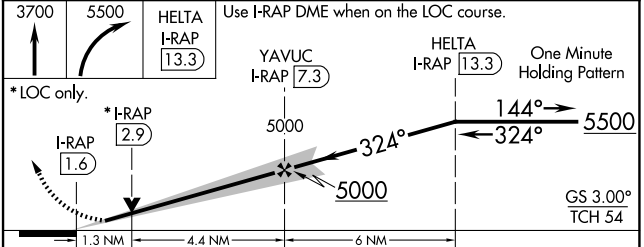
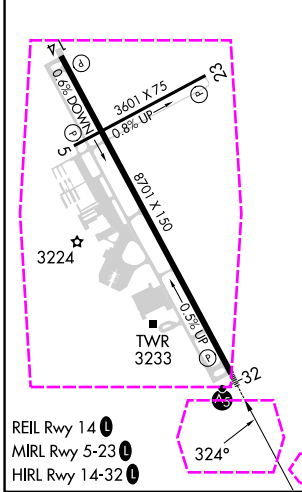
<b>⚠</b> DME and RNAV 1-GPS required. ILS glideslope unusable for coupled approaches below 3360. For inop ALS, increase S-ILS Cat E visibility to RVR 4000 and S-LOC Cat E visibility to 1 3/8 SM. # RVR 1800 authorized with use of FD or AP or HUD to DA.	MALSR 	MISSED APPROACH: Climb to 3700 then climbing right turn to 5500 direct HELTA and hold.
---	-----------	--

ASOS <b>118.525</b>	ELLSWORTH APP CON ★ <b>119.5 259.1</b>	RAPID CITY TOWER ★ <b>125.85 (CTAF) 1 257.8</b>	GND CON <b>121.9</b>	UNICOM <b>122.95</b>
------------------------	---	--	-------------------------	-------------------------

## RNAV 1-GPS or RADAR REQUIRED



ELEV 3204	<b>D</b>	TDZE 3160
-----------	----------	-----------



CATEGORY	A	B	C	D	E
S-ILS 32 #	3360/24 200 (200-1/2)				
S-LOC 32	3620/24	460 (500-1/2)	3620/45	460 (500-7/8)	
<b>C</b> CIRCLING	3660-1 456 (500-1)	3840-1 636 (700-1)	3860-1 3/4 656 (700-1 3/4)	3940-2 1/4 736 (800-2 1/4)	3960-2 3/4 756 (800-2 3/4)

NC-1, 30 OCT 2025 to 27 NOV 2025

NC-1, 30 OCT 2025 to 27 NOV 2025

LOC/DME I-RAP <b>109.3</b> Chan <b>30</b>	APP CRS <b>324°</b>	Rwy Ldg <b>8701</b> TDZE <b>3160</b> Apt Elev <b>3204</b>
---	------------------------	---

# ILS or LOC RWY 32

RAPID CITY RGNL (RAP)

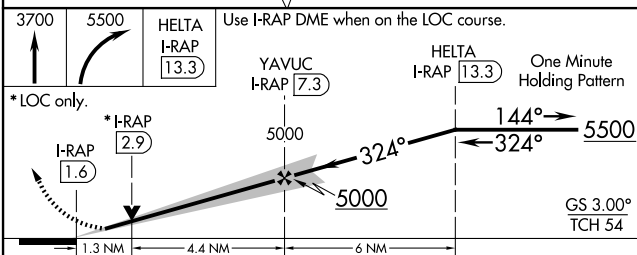
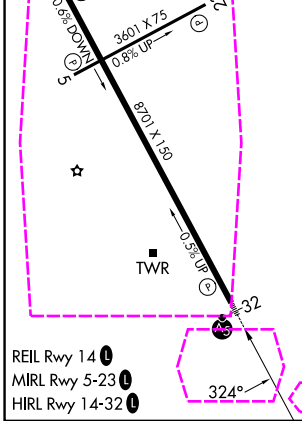
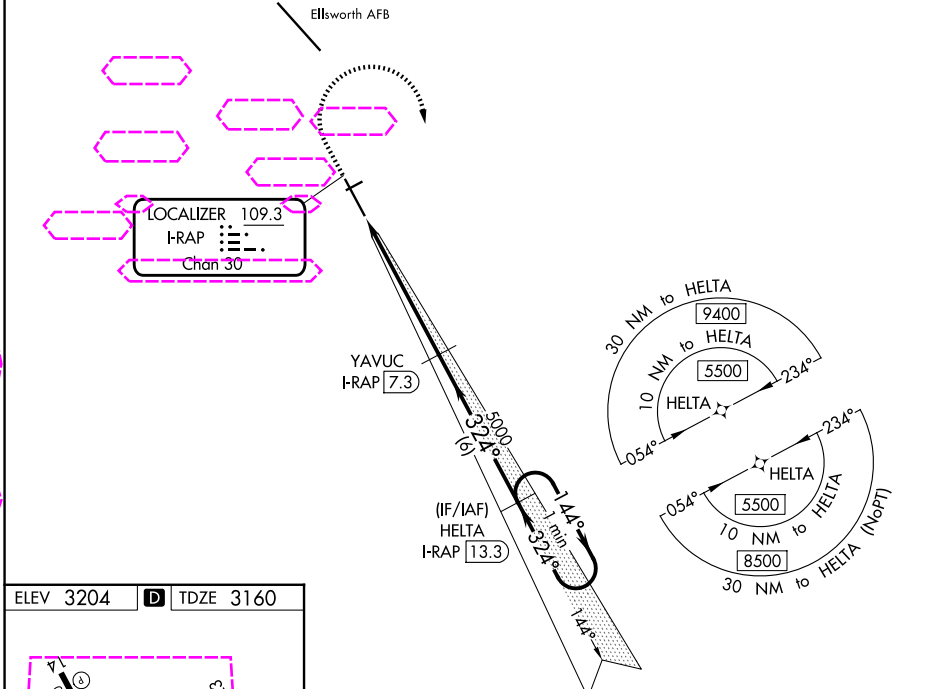
**⚠** DME and RNAV 1-GPS required. ILS glideslope unusable for coupled approaches below 3360. For inop ALS, increase S-ILS Cat E visibility to RVR 4000 and S-LOC Cat E visibility to 1½ SM. # RVR 1800 authorized with use of FD or AP or HUD to DA.



**MISSED APPROACH:** Climb to 3700 then climbing right turn to 5500 direct HELTA and hold.

ASOS <b>118.525</b>	ELLSWORTH APP CON ★ <b>119.5 259.1</b>	RAPID CITY TOWER ★ <b>125.85 (CTAF) 257.8</b>	GND CON <b>121.9</b>	UNICOM <b>122.95</b>
------------------------	---	--	-------------------------	-------------------------

## RNAV 1-GPS or RADAR REQUIRED



CATEGORY	A	B	C	D	E
S-ILS 32 #	3360/24 200 (200-½)				
S-LOC 32	3620/24	460 (500-½)	3620/45	460 (500-¾)	
CIRCLING	3660-1 456 (500-1)	3840-1 636 (700-1)	3860-1¾ 656 (700-1¾)	3940-2¼ 736 (800-2¼)	3960-2¾ 756 (800-2¾)

NC-1, 27 NOV 2025 to 25 DEC 2025

NC-1, 27 NOV 2025 to 25 DEC 2025