

LAS CRUCES, NEW MEXICO

AL-869 (FAA)

25163

WAAS CH <b>63136</b> <b>W30A</b>	APP CRS <b>307°</b>	Rwy Ldg TDZE Apt Elev	<b>7500</b> <b>4444</b> <b>4457</b>
--	------------------------	-----------------------------	---

# RNAV (GPS) RWY 30

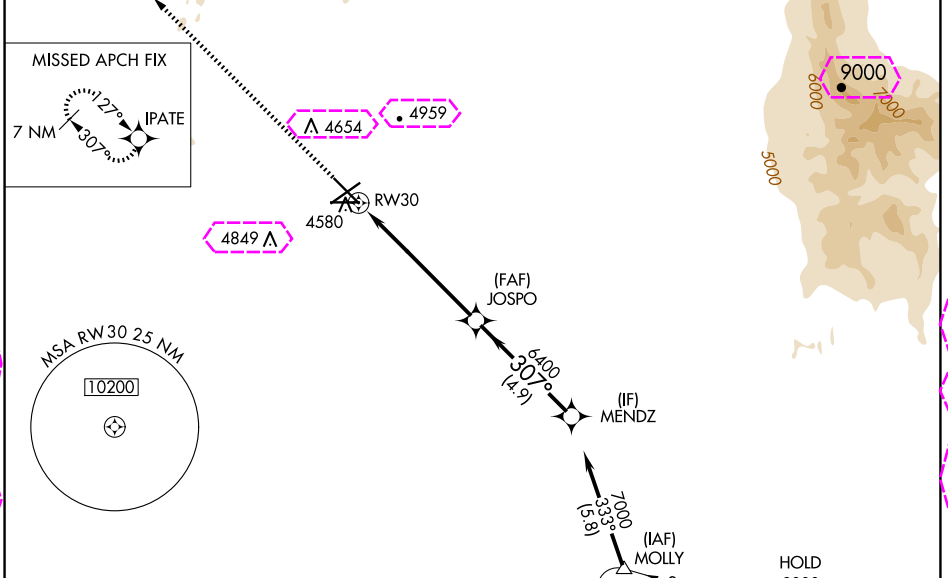
LAS CRUCES INTL (LRU)

**⚠** For uncompensated Baro-VNAV systems, LNAV/VNAV NA below -12°C (11°F) or above 51°C (124°F). DME/DME RNP-0.3 NA. Baro-VNAV and VDP NA when using Deming altimeter setting. When local altimeter setting not received, use Deming altimeter setting; increase LPV DA to 4758 feet, LNAV/VNAV DA to 4863 feet and all visibilities 3/8 mile; increase all MDA 120 feet and visibility Cat C and D 1/2 mile.

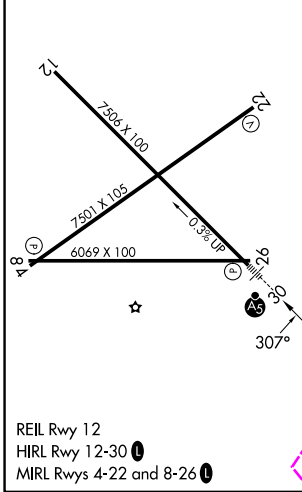


**MISSED APPROACH:** Climb to 9000 direct IPATE and hold, continue climb-in-hold to 9000.

AWOS-3 <b>119.025</b>	ALBUQUERQUE CENTER <b>128.2 285.5</b>	UNICOM <b>122.7 (CTAF)</b>
--------------------------	--	-------------------------------



ELEV 4457	<b>D</b>	TDZE 4444
-----------	----------	-----------



9000	IPATE	JOSP0	MENDZ
		6400	7000
* LNAV only.			
	RWY 30		
	1.1 NM	4.9 NM	4.9 NM
		6400	
		307°	
		6400	
			GP 3.00° TCH 47
CATEGORY	A	B	C
LPV DA	4644-1/2 200 (200-1/2)		
LNAV/VNAV DA	4749-5/8 305 (300-5/8)		
LNAV MDA	4840-1/2 396 (400-1/2)		4840-5/8 396 (400-5/8)
<b>C CIRCLING</b>	4900-1 443 (500-1)	5040-1 583 (600-1)	5320-2 1/2 863 (900-2 1/2)
			5320-2 3/4 863 (900-2 3/4)

LAS CRUCES, NEW MEXICO  
Amdt 2 18AUG16

32°17'N-106°55'W

# RNAV (GPS) RWY 30

SW-1, 30 OCT 2025 to 27 NOV 2025

SW-1, 30 OCT 2025 to 27 NOV 2025

LAS CRUCES, NEW MEXICO

AL-869 (FAA)

25331

WAAS CH <b>63136</b> <b>W30A</b>	APP CRS <b>307°</b>	Rwy Ldg TDZE Apt Elev	<b>7500</b> <b>4444</b> <b>4457</b>
--	------------------------	-----------------------------	---

# RNAV (GPS) RWY 30

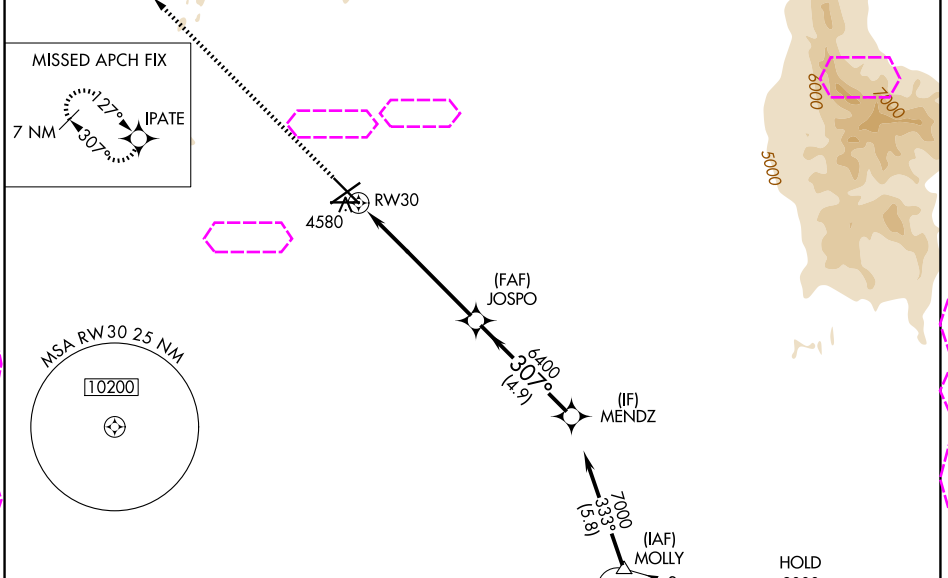
LAS CRUCES INTL (LRU)

**⚠** For uncompensated Baro-VNAV systems, LNAV/VNAV NA below -12°C (11°F) or above 51°C (124°F). DME/DME RNP-0.3 NA. Baro-VNAV and VDP NA when using Deming altimeter setting. When local altimeter setting not received, use Deming altimeter setting; increase LPV DA to 4758 feet, LNAV/VNAV DA to 4863 feet and all visibilities 3/8 mile; increase all MDA 120 feet and visibility Cat C and D 1/2 mile.



**MISSED APPROACH:** Climb to 9000 direct IPATE and hold, continue climb-in-hold to 9000.

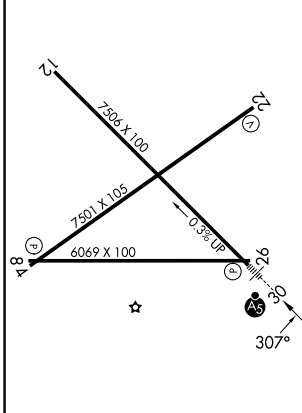
AWOS-3 <b>119.025</b>	ALBUQUERQUE CENTER <b>128.2 285.5</b>	UNICOM <b>122.7 (CTAF)</b>
--------------------------	--	-------------------------------



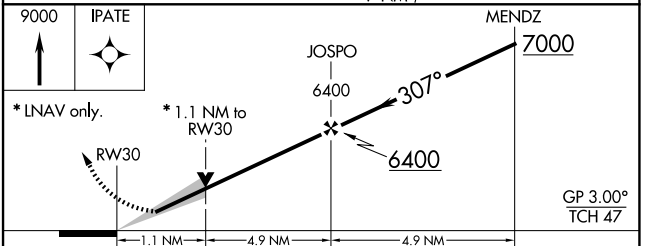
SW-1, 27 NOV 2025 to 25 DEC 2025

SW-1, 27 NOV 2025 to 25 DEC 2025

ELEV 4457	<b>D</b>	TDZE 4444
-----------	----------	-----------



REIL Rwy 12  
HIRL Rwy 12-30  
MIRL Rwy 4-22 and 8-26



CATEGORY	A	B	C	D
LPV DA		4644-1/2	200 (200-1/2)	
LNAV/VNAV DA		4749-5/8	305 (300-5/8)	
LNAV MDA	4840-1/2	396 (400-1/2)	4840-5/8	396 (400-5/8)
<b>CIRCLING</b>	4900-1 443 (500-1)	5040-1 583 (600-1)	5320-2 1/2 863 (900-2 1/2)	5320-2 3/4 863 (900-2 3/4)

LAS CRUCES, NEW MEXICO  
Amdt 2 18AUG16

32°17'N-106°55'W

# RNAV (GPS) RWY 30

LAS CRUCES INTL (LRU)