

LAS CRUCES, NEW MEXICO

AL-869 (FAA)

25163

WAAS CH <b>93836</b> <b>W12A</b>	APP CRS <b>127°</b>	Rwy Ldg TDZE Apt Elev	<b>7506</b> <b>4457</b> <b>4457</b>
--	------------------------	-----------------------------	---

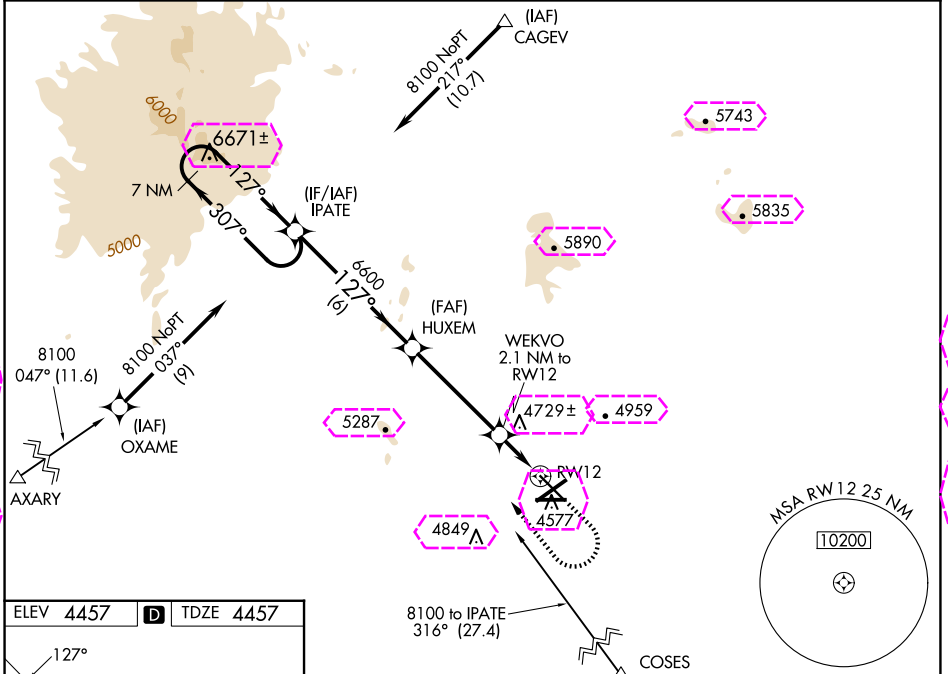
# RNAV (GPS) RWY 12

LAS CRUCES INTL (LRU)

**⚠** For uncompensated Baro-VNAV systems, LNAV/VNAV NA below -12 °C (11 °F) or above 49 °C (120 °F). DME/DME RNP-0.3 NA. Helicopter visibility reduction below 3/4 SM NA. Baro-VNAV and VDP NA when using Deming altimeter setting. When local altimeter setting not received, use Deming altimeter setting; increase LPV DA to 4821 feet and LNAV/VNAV DA to 4824 feet and all visibilities 1/2 mile; increase all MDA 120 feet and visibility Cat C and D 1/2 mile.

**MISSED APPROACH:** Climb to 5800 then climbing right turn to 8100 direct IPATE and hold.

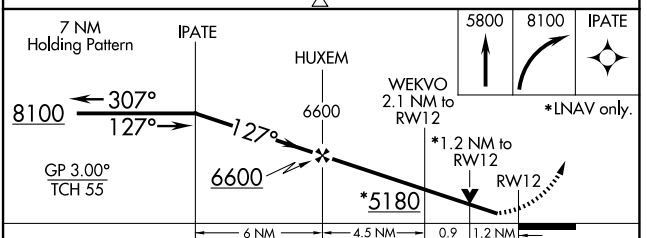
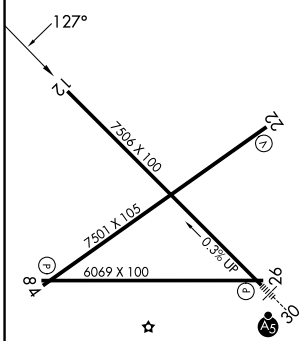
AWOS-3 <b>119.025</b>	ALBUQUERQUE CENTER <b>128.2 285.5</b>	UNICOM <b>122.7 (CTAF)</b>
--------------------------	--	-------------------------------



SW-1, 30 OCT 2025 to 27 NOV 2025

SW-1, 30 OCT 2025 to 27 NOV 2025

ELEV 4457	<b>D</b>	TDZE 4457
-----------	----------	-----------



CATEGORY	A	B	C	D
LPV DA		4707-3/4	250 (300-3/4)	
LNAV/VNAV DA		4710-3/4	253 (300-3/4)	
LNAV MDA	4900-1	443 (500-1)	4900-13/8	443 (500-13/8)
<b>CIRCLING</b>	4900-1 443 (500-1)	5040-1 583 (600-1)	5320-2 1/2 863 (900-2 1/2)	5320-2 3/4 863 (900-2 3/4)

REIL Rwy 12  
HIRL Rwy 12-30  
MIRL Rwy 4-22 and 8-26

LAS CRUCES, NEW MEXICO  
Amdt 2 18AUG16

32°17'N-106°55'W

LAS CRUCES INTL (LRU)  
**RNAV (GPS) RWY 12**

LAS CRUCES, NEW MEXICO

AL-869 (FAA)

25331

WAAS CH <b>93836</b> <b>W12A</b>	APP CRS <b>127°</b>	Rwy Ldg TDZE Apt Elev	<b>7506</b> <b>4457</b> <b>4457</b>
--	------------------------	-----------------------------	---

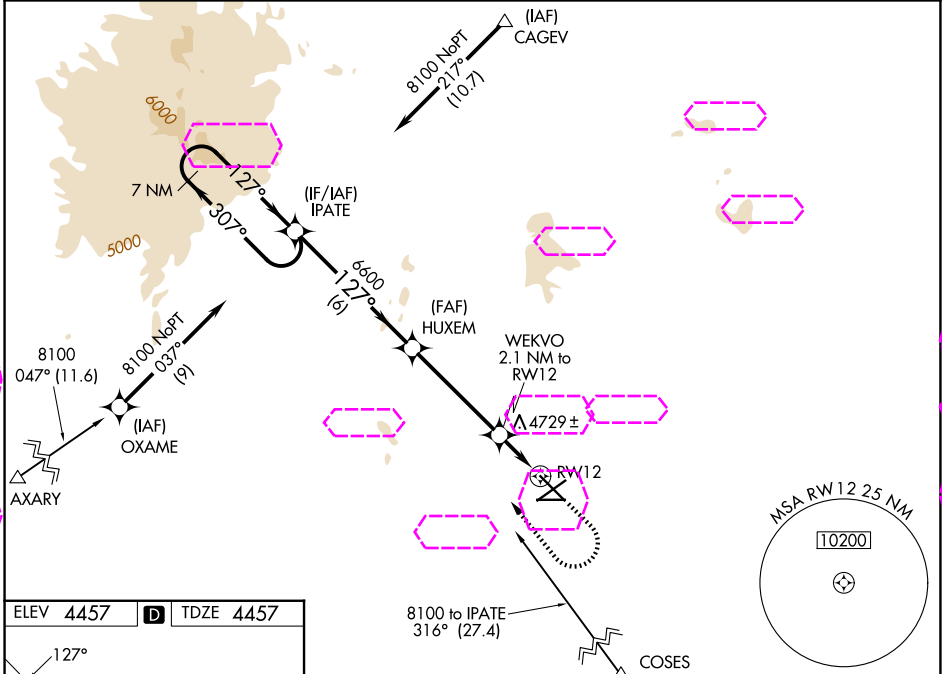
# RNAV (GPS) RWY 12

LAS CRUCES INTL (LRU)

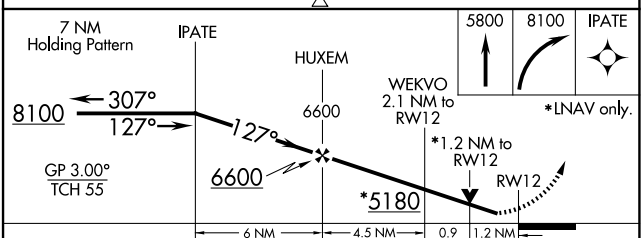
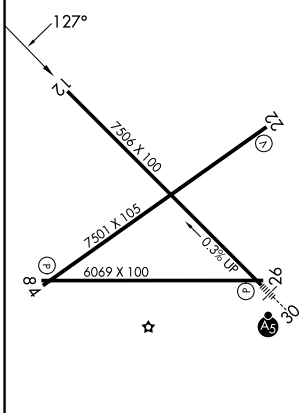
**⚠** For uncompensated Baro-VNAV systems, LNAV/VNAV NA below -12 °C (11°F) or above 49°C (120°F). DME/DME RNP-0.3 NA. Helicopter visibility reduction below 3/4 SM NA. Baro-VNAV and VDP NA when using Deming altimeter setting. When local altimeter setting not received, use Deming altimeter setting; increase LPV DA to 4821 feet and LNAV/VNAV DA to 4824 feet and all visibilities 1/2 mile; increase all MDA 120 feet and visibility Cat C and D 1/2 mile.

**MISSED APPROACH:** Climb to 5800 then climbing right turn to 8100 direct IPATE and hold.

AWOS-3 <b>119,025</b>	ALBUQUERQUE CENTER <b>128.2 285.5</b>	UNICOM <b>122.7 (CTAF)</b>
--------------------------	--	-------------------------------



ELEV 4457	<b>D</b>	TDZE 4457
-----------	----------	-----------



CATEGORY	A	B	C	D
LPV DA		4707-3/4	250 (300-3/4)	
LNAV/VNAV DA		4710-3/4	253 (300-3/4)	
LNAV MDA	4900-1	443 (500-1)	4900-13/8	443 (500-13/8)
<b>CIRCLING</b>	4900-1 443 (500-1)	5040-1 583 (600-1)	5320-2 1/2 863 (900-2 1/2)	5320-2 3/4 863 (900-2 3/4)

REIL Rwy 12  
HIRL Rwy 12-30  
MIRL Rwy 4-22 and 8-26

LAS CRUCES, NEW MEXICO  
Amdt 2 18AUG16

32°17'N-106°55'W

# RNAV (GPS) RWY 12

SW-1, 127 NOV 2025 to 25 DEC 2025

SW-1, 127 NOV 2025 to 25 DEC 2025