

LOC/DME I-RLU <b>109.3</b> Chan 30	APP CRS <b>307°</b>	Rwy Ldg TDZE Apt Elev	<b>7500</b> <b>4444</b> <b>4457</b>
--	------------------------	-----------------------------	---

# ILS or LOC RWY 30

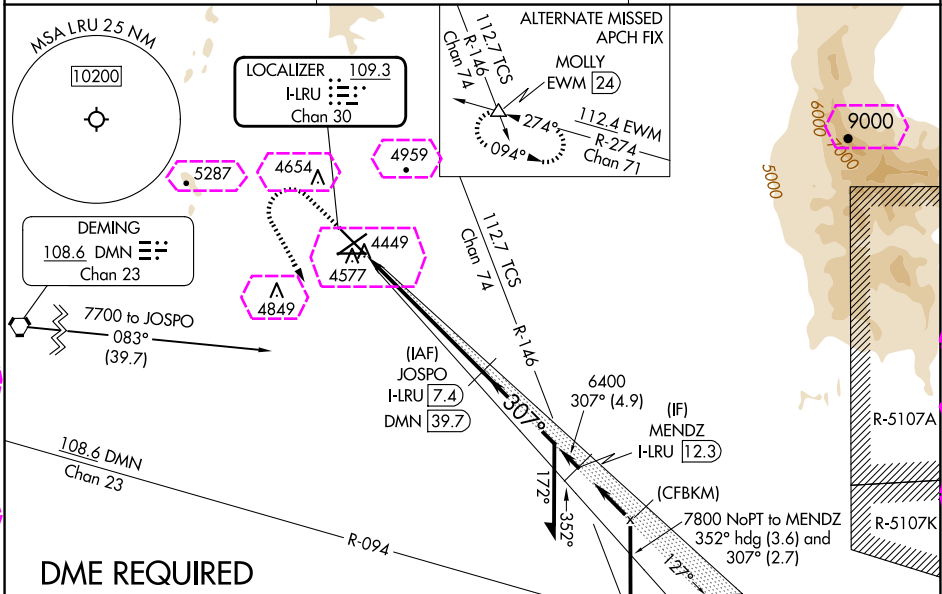
LAS CRUCES INTL(LRU)

**NA** DME required. When local altimeter setting not received, use Deming altimeter setting: increase DA to 4758 feet and all visibilities 1/8 mile; increase all MDA 120 feet and visibility Cat C and D 1/2 mile. VDP NA when using Deming altimeter setting.

MALSRL

MISSED APPROACH: Climb to 5100 then climbing left turn to 9000 on heading 139° and on DMN VORTAC R-094 to MOLLY INT/DMN 46.7 DME and hold, continue climb-in-hold to 9000.

AWOS-3 <b>119.025</b>	ALBUQUERQUE CENTER <b>128.2 285.5</b>	UNICOM <b>122.7 (CTAF)</b>
--------------------------	--	-------------------------------



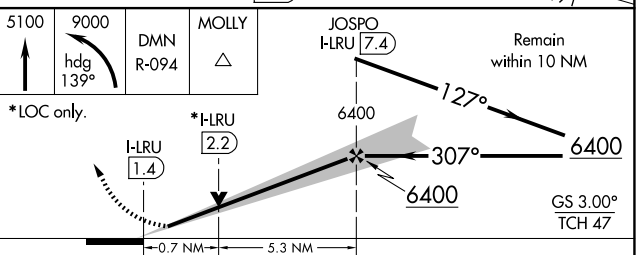
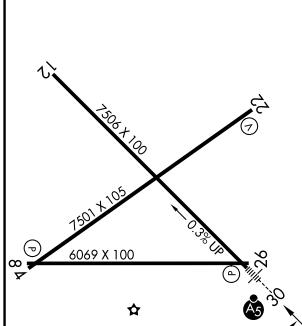
SW-1, 30 OCT 2025 to 27 NOV 2025

SW-1, 30 OCT 2025 to 27 NOV 2025

### DME REQUIRED

ELEV <b>4457</b>	<b>D</b>	TDZE <b>4444</b>
------------------	----------	------------------

Procedure NA for arrivals at MOLLY on V611 southeast bound.



REIL Rwy 12	HIRL Rwy 12-30	MIRL Rwy 4-22 and 8-26	<b>CIRCLING</b>	4900-1 443 (500-1)	5040-1 583 (600-1)	5320-2 1/2 863 (900-2 1/2)	5320-2 3/4 863 (900-2 3/4)
S-ILS 30		4644-1/2 200 (200-1/2)					
S-LOC 30		4720-1/2 276 (300-1/2)					

LOC/DME I-LRU <b>109.3</b> Chan 30	APP CRS <b>307°</b>	Rwy Ldg TDZE Apt Elev	<b>7500</b> <b>4444</b> <b>4457</b>
--	------------------------	-----------------------------	---

# ILS or LOC RWY 30

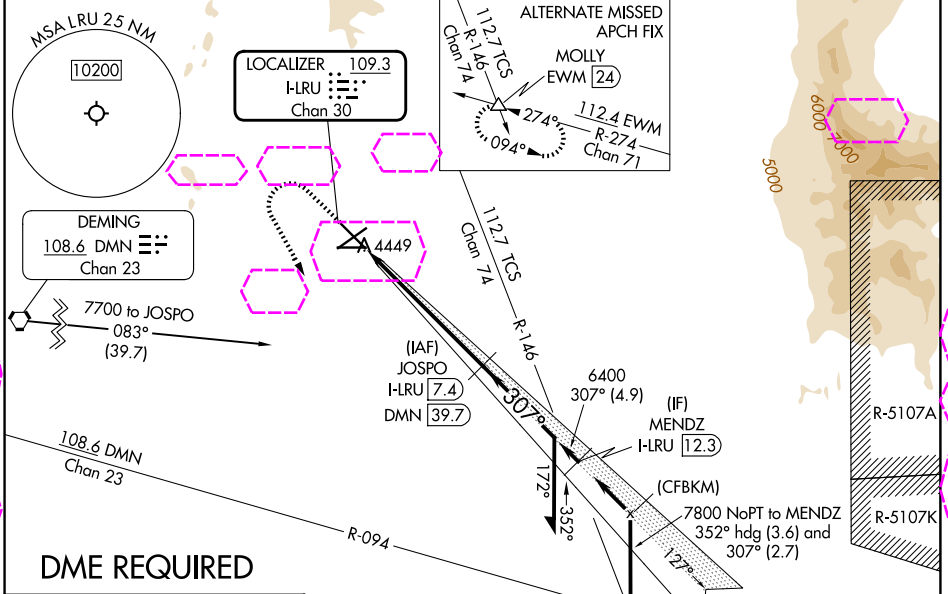
LAS CRUCES INTL(LRU)

**NA** DME required. When local altimeter setting not received, use Deming altimeter setting: increase DA to 4758 feet and all visibilities 1/8 mile; increase all MDA 120 feet and visibility Cat C and D 1/2 mile. VDP NA when using Deming altimeter setting.

MALSRL

MISSED APPROACH: Climb to 5100 then climbing left turn to 9000 on heading 139° and on DMN VORTAC R-094 to MOLLY INT/DMN 46.7 DME and hold, continue climb-in-hold to 9000.

AWOS-3 <b>119.025</b>	ALBUQUERQUE CENTER <b>128.2 285.5</b>	UNICOM <b>122.7 (CTAF)</b>
--------------------------	--	-------------------------------



ELEV <b>4457</b>	<b>D</b>	TDZE <b>4444</b>
------------------	----------	------------------

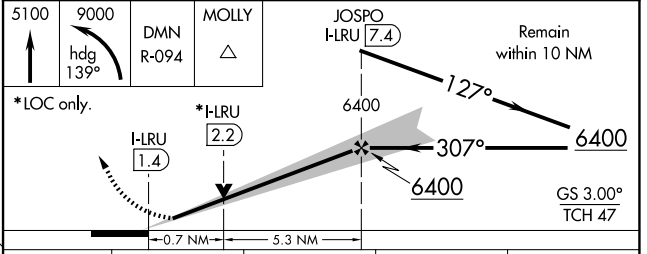
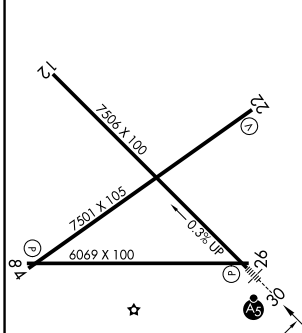
Procedure NA for arrivals at MOLLY on V611 southeast bound.

(IAF) MOLLY EWM 24 DMN 46.7

(IAF) MENDZ I-LRU 12.3

(IF) MENDZ I-LRU 12.3

(CFBKM) 7800 NoPT to MENDZ 352° hdg (3.6) and 307° (2.7)



CATEGORY	A	B	C	D
S-ILS 30	4644-1/2 200 (200-1/2)			
S-LOC 30	4720-1/2 276 (300-1/2)			
<b>CIRCLING</b>	4900-1 443 (500-1)	5040-1 583 (600-1)	5320-2 1/2 863 (900-2 1/2)	5320-2 3/4 863 (900-2 3/4)

SW-1, 27 NOV 2025 to 25 DEC 2025

SW-1, 27 NOV 2025 to 25 DEC 2025